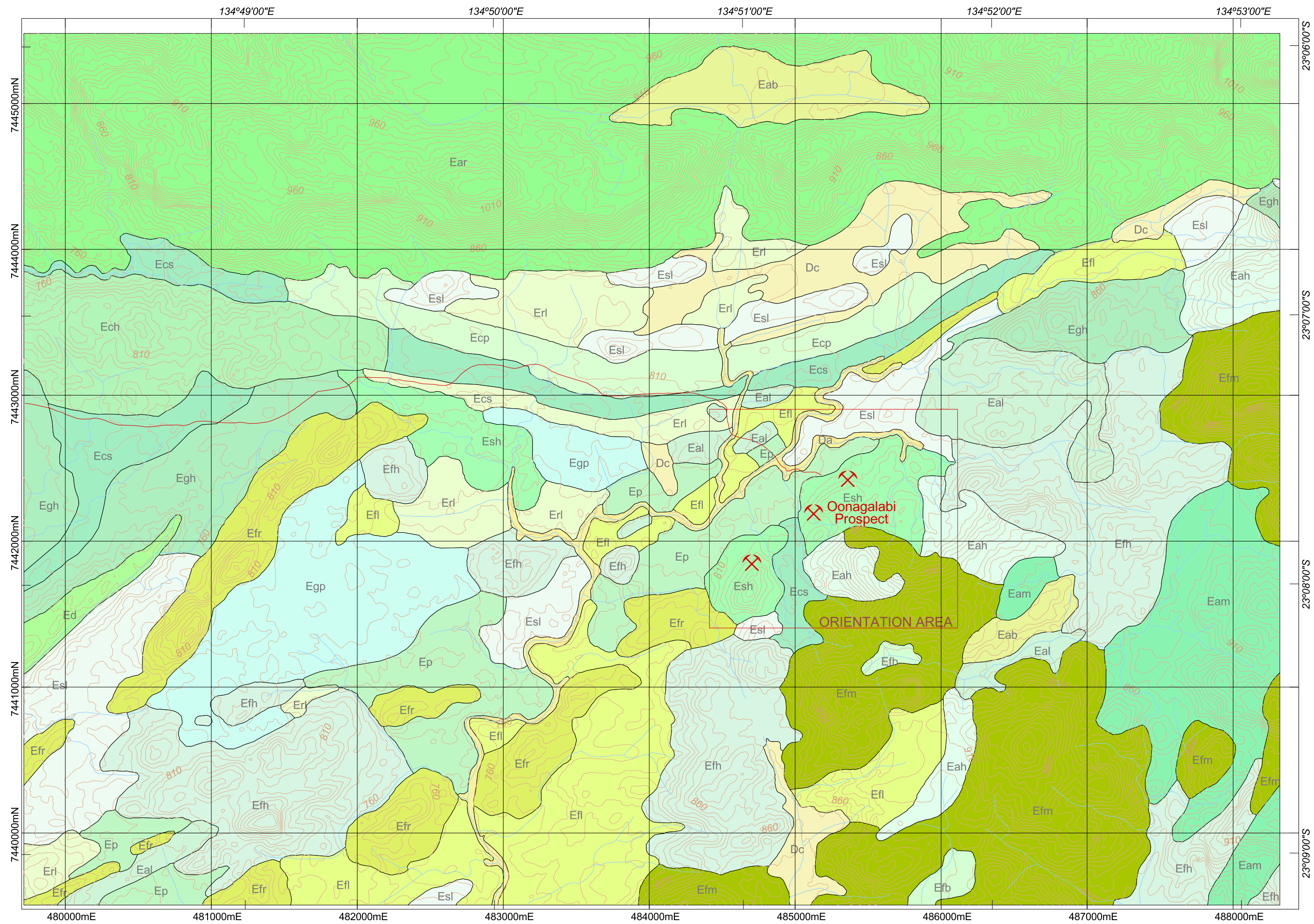


REGOLITH-LANDFORM MAP OF OONAGALABI PROSPECT, NORTHERN TERRITORY

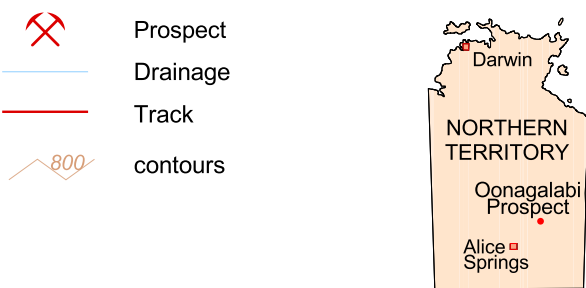


EROSIONAL REGIME

- Eab** Small intermontane basin on slightly weathered amphibolite and associated metamorphic rocks
- Eah** High hills on slightly weathered amphibolite and associated metamorphic rocks (various gneisses)
- Eal** Low hills on slightly weathered amphibolite and associated metamorphic rocks (various gneisses)
- Eam** Mountains of slightly weathered amphibolite and associated metamorphic rocks
- Ear** High ranges of slightly weathered amphibolite and associated metamorphic rocks
- Ech** High hills on slightly weathered calc-silicate rock and marble
- Ecp** Erosion plains with thin lithic soil on saprock of calc-silicate rock and various gneisses
- Ecs** Low hills with thin lithic soil on slightly weathered calc-silicate rock and marble
- Ed** Actively dissecting pediments with a veneer of lithic soil or lag of lithic fragments on saprock
- Efb** Small intermontane basin on slightly weathered quartzofeldspathic gneiss
- Efl** Low hills on slightly weathered quartzofeldspathic gneiss
- Efh** High hills on slightly weathered quartzofeldspathic gneiss
- Efm** Mountains of slightly weathered quartzofeldspathic gneiss
- Efr** Low ridges on slightly weathered quartzofeldspathic gneiss
- Egh** Low hills on slightly weathered garnet-bearing gneiss or quartzofeldspathic gneiss
- Egp** Erosion plains on slightly weathered garnet-bearing gneiss or quartzofeldspathic gneiss
- Ep** Undulating erosion plains with a veneer of lithic soil on saprock
- Erl** Low rises with lag of lithic fragments and erosional remnants of highly weathered metamorphic rocks
- Esh** Hills on slightly weathered muscovite-biotite schist, gneiss or quartzofeldspathic gneiss
- Esl** Low hills on slightly weathered muscovite-biotite schist, gneiss or quartzofeldspathic gneiss

DEPOSITIONAL REGIME

- Da** River channels with quartz, mica and garnet sands and unconsolidated fluvial sediments
- Dc** Pediments of lithic fragments in colluvium and sheetwash detritus



Regolith and landforms by Li Shu (CRC LEME, CSIRO), 1999. GIS by Li Shu. Based on interpretation of aerial photographs and field observations. Published by CRC LEME, CSIRO

© CRC LEME 1999
This work is copyright. Apart from any fair dealings for the purpose of study, research, criticism or review, as permitted under the Copyright Act, no part may be produced by any process without written permission. Copyright is the responsibility of the Director, CRC LEME.

Inquiries should be directed to:
The Director
CRC LEME
c/- CSIRO Exploration and Mining
Private Bag
Wembley, WA6014
Tel: (08) 93336272; Fax: (08) 93336146

CRC LEME does not warrant that this map is definitive, nor free from error and does not accept liability for any loss caused or arising from reliance upon information provided herein.

RESTRICTED CIRCULATION:
THIS MAP HAS BEEN PREPARED EXCLUSIVELY FOR THE NORTHERN TERRITORY GEOLOGICAL SURVEY AS PART OF THE CRC LEME ARGOS PROJECT AND IS NOT TO BE GIVEN ADDITIONAL DISTRIBUTION OR REPRODUCED IN ANY MANNER WITHOUT THE CONSENT OF THE DIRECTOR OF THE COOPERATIVE RESEARCH CENTRE FOR LANDSCAPE EVOLUTION AND MINERAL EXPLORATION.

Warning: Inks are water soluble and will fade with prolonged exposure to light

