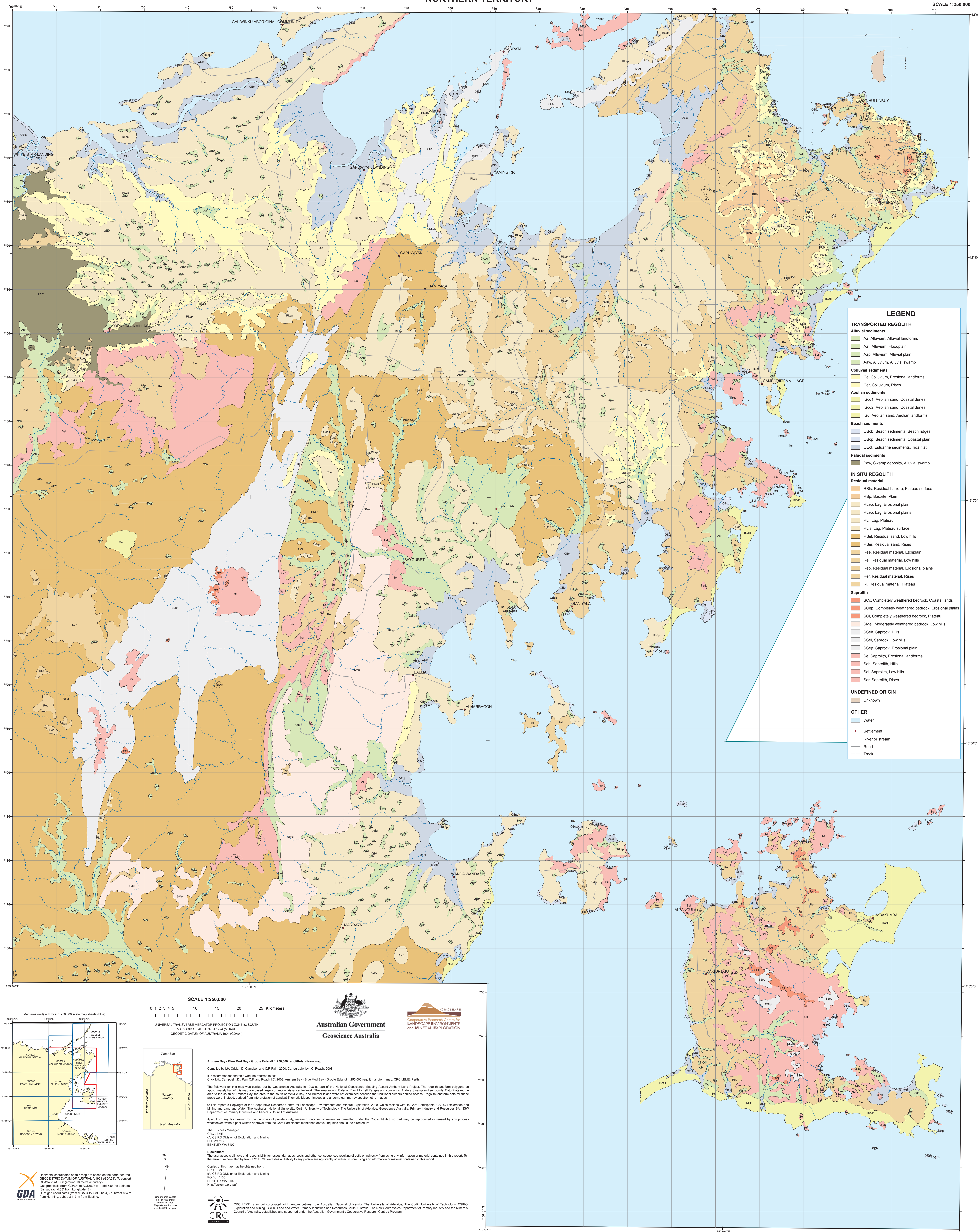


ARNHEM BAY - BLUE MUD BAY - GROOTE EYLANDT
NORTHERN TERRITORY

SCALE 1:250,000



SCALE 1:250,000
0 1 2 3 4 5 10 15 20 25 Kilometers
UNIVERSAL TRANSVERSE MERCATOR PROJECTION ZONE 53 SOUTH
MAP GRID OF AUSTRALIA 1994 (MGAS4)
GEODETIC DATUM OF AUSTRALIA 1994 (GD94)



Arnhem Bay - Blue Mud Bay - Groote Eylandt 1:250,000 regolith-landform map
Compiled by J.H. Crick, I.D. Campbell and C.F. Pain, 2008. Cartography by I.C. Roach, 2008

It is recommended that this work be referred to as:
Crick J.H., Campbell I.D., Pain C.F. and Roach I.C. 2008. Arnhem Bay - Blue Mud Bay - Groote Eylandt 1:250,000 regolith-landform map. CRC LEME, Perth.

The bedrock for this map was carried out by Geoscience Australia in 1998 as part of the National Geoscience Mapping Accord Arnhem Land Project. The regolith-landform polygons on approximately half of this map are based largely on reconnaissance bedrock. The area around Caledon Bay, Mitchell Ranges and surrounds, Arnhem Swamp and surrounds, Cape Fallets, the area to the south of Arnhem Bay, the area to the south of Melville Bay, and several islands were not examined because the traditional owners denied access. Regolith-landform data for these areas were, instead, derived from interpretation of Landsat Thematic Mapper images and airborne gamma-ray spectrometric images.

© This report is Copyright of the Cooperative Research Centre for Landscape Environments and Mineral Exploration, 2008, which resides with its Core Participants: CSIRO Exploration and Mining and Land and Water, The Australian National University, Curtin University of Technology, The University of Adelaide, Geoscience Australia, Primary Industries and Resources SA, NSW Department of Primary Industries and Minerals Council of Australia.

Apart from any fair dealing for the purposes of private study, research, criticism or review, as permitted under the Copyright Act, no part may be reproduced or reused by any process whatsoever, without prior written approval from the Core Participants mentioned above. Inquiries should be directed to:

The Business Manager
CRC LEME
c/o CSIRO Division of Exploration and Mining
PO Box 1130
BENTLEY WA 6102

Disclaimer:
The user accepts all risks and responsibility for losses, damages, costs and other consequences resulting directly or indirectly from using any information or material contained in this report. To the maximum permitted by law, CRC LEME excludes all liability to any person arising directly or indirectly from using any information or material contained in this report.

Copies of this map may be obtained from:
CRC LEME
c/o CSIRO Division of Exploration and Mining
PO Box 1130
BENTLEY WA 6102
http://crclme.org.au/



CRC LEME is an unincorporated joint venture between the Australian National University, The University of Adelaide, The Curtin University of Technology, CSIRO Exploration and Mining, CSIRO Land and Water, Primary Industries and Resources South Australia, The New South Wales Department of Primary Industry and the Minerals Council of Australia, established and supported under the Australian Government's Cooperative Research Centres Program.

