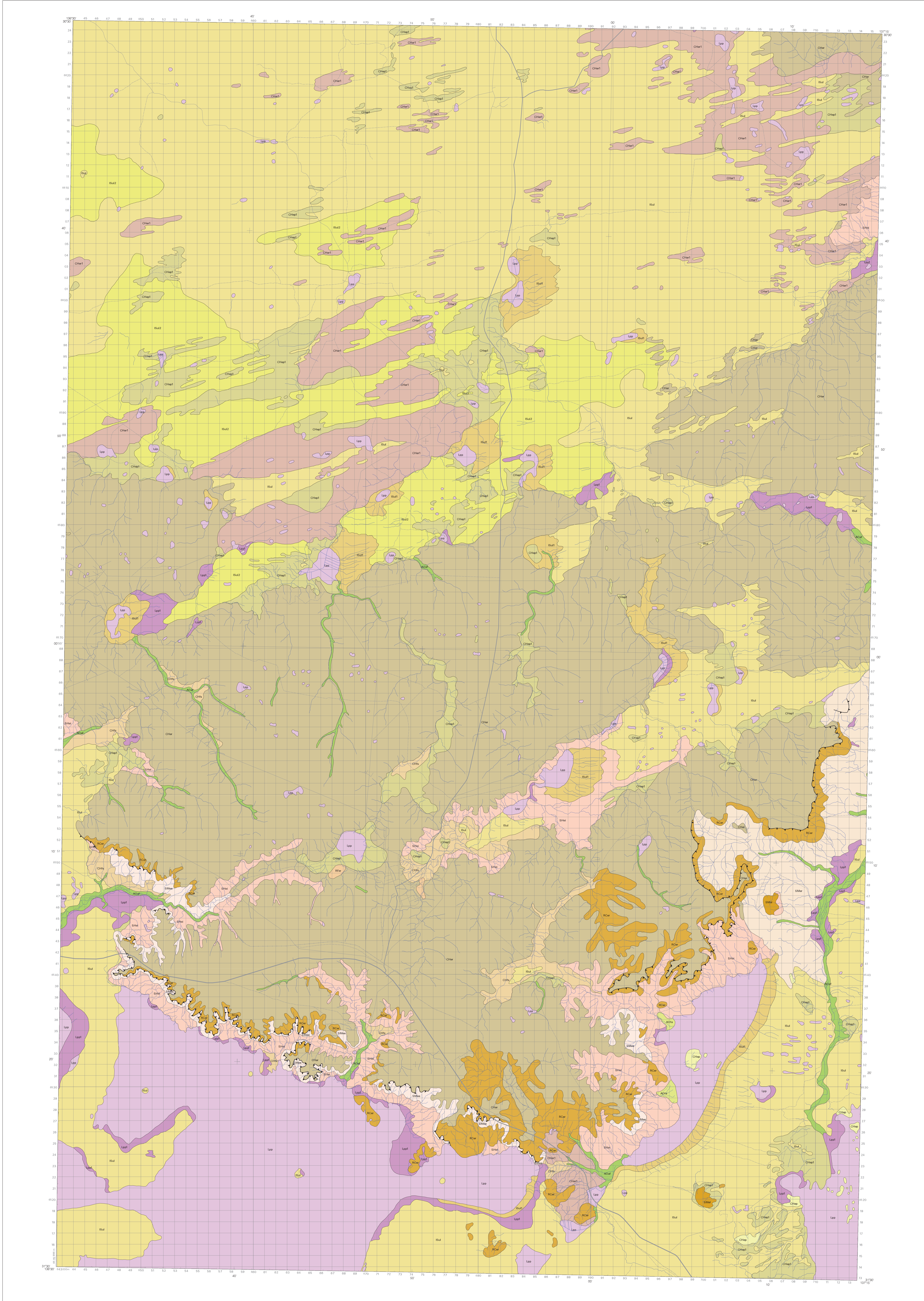


# WOOMERA/KOOLY MILKA Regolith - Landforms



SCALE 1:100 000  
 1 0 1 2 3 4 5 6 7 8 9 10 Kilometres  
 UNIVERSAL TRANSVERSE MERCATOR PROJECTION  
 DATUM AUSTRALIAN GEODETIC CONTROL ZONE 53  
 LATITUDE OF ORIGIN: 0° LONGITUDE OF ORIGIN: 133°

## REGOLITH TYPES

### Transported regolith

#### Lacustrine sediments

- Lap1** Gypsiferous sandstone covering of yellow-brown clays, silt, gypsiferous clays and quartz sands. Clays have medium to heavy clay with flatter and gypsiferous crusts of 100-200mm thickness.
- Lap2** Mixtures of silt and clayey sediments consisting of reddish-brown clays, silt, gypsiferous clays and quartz sands. Minor sand dunes and modified sandstone. Clays and gypsiferous crusts in lake floors and sand dunes.

#### Alluvial sediments

- Ala1** Alluvial sediments consisting of clays, fine to medium sandy red clays and gravels. In place sediments are partly covered by calcareous and ferruginous siltic lags. Forms discrete floodplain channels and outwash floodplains.
- Ala2** Alluvial fan and colluvial sediments consisting of variable proportions of sand, clay and gravel.

#### Aeolian sediments

- Ru1** Unlaminated reddish orange fine grained sandstone dunes and minor scattered undulating sandstone. Dunes trend mainly north-south. Sand grains are well rounded and coarse, and appear to be locally derived with clay. Clays are common. Clays are coarse to fine sandstone and calcareous crusts are common below dunes.
- Ru2** Unlaminated reddish orange fine grained sandstone dunes and scattered undulating sandstone. Clays are common. Clays are coarse to fine sandstone and calcareous crusts are common below dunes.
- Ru3** Unlaminated reddish orange fine grained sandstone dunes and scattered undulating sandstone. Clays are common. Clays are coarse to fine sandstone and calcareous crusts are common below dunes.

#### Colluvial sediments

- Ch1** Unlaminated reddish-brown clays and sands, and localised stream channel sediments. Minor clay pans.
- Ch2** Sheetflow clay and sands over ferruginous and reddish sandstone. Reddish clay partly covered by sand and lags consisting of thin fragments and quartz grains. Forms eroded pans (1-9 metres relief) and local fans (9-30 metres relief).

### Colluvial sediments

- Clu1** Sheetflow colluvial sands and clays. Local residual soils over highly weathered modified sandstone. Minor dunes and eroded sand dunes.
- Clu2** Sheetflow colluvial sands and clays over highly weathered modified sandstone. Minor dunes and eroded sand dunes.
- Clu3** Sheetflow colluvial sands and clays over highly weathered modified sandstone. Minor dunes and eroded sand dunes.

### In-Situ Regolith

- IS1** Sheetflow colluvial sands and clays over highly weathered modified sandstone. Minor dunes and eroded sand dunes.
- IS2** Sheetflow colluvial sands and clays over highly weathered modified sandstone. Minor dunes and eroded sand dunes.
- IS3** Sheetflow colluvial sands and clays over highly weathered modified sandstone. Minor dunes and eroded sand dunes.

### Separate

- Se1** Sheetflow colluvial sands and clays over highly weathered modified sandstone. Minor dunes and eroded sand dunes.
- Se2** Sheetflow colluvial sands and clays over highly weathered modified sandstone. Minor dunes and eroded sand dunes.
- Se3** Sheetflow colluvial sands and clays over highly weathered modified sandstone. Minor dunes and eroded sand dunes.

- Regolith landform unit boundary
- Minor erosional scarp
- Drainage
- Principal Road
- Secondary Road
- Minor Road
- Vehicle Track
- Railway



INDEX TO 1:100 000 MAPS

1:100 000 MAP NO.	1:100 000 MAP NAME
1000	Woomera
1001	Woomera
1002	Woomera
1003	Woomera
1004	Woomera
1005	Woomera
1006	Woomera
1007	Woomera
1008	Woomera
1009	Woomera
1010	Woomera
1011	Woomera
1012	Woomera
1013	Woomera
1014	Woomera
1015	Woomera
1016	Woomera
1017	Woomera
1018	Woomera
1019	Woomera
1020	Woomera
1021	Woomera
1022	Woomera
1023	Woomera
1024	Woomera
1025	Woomera
1026	Woomera
1027	Woomera
1028	Woomera
1029	Woomera
1030	Woomera
1031	Woomera
1032	Woomera
1033	Woomera
1034	Woomera
1035	Woomera
1036	Woomera
1037	Woomera
1038	Woomera
1039	Woomera
1040	Woomera
1041	Woomera
1042	Woomera
1043	Woomera
1044	Woomera
1045	Woomera
1046	Woomera
1047	Woomera
1048	Woomera
1049	Woomera
1050	Woomera

AGSO  
 Geology for A.A. (Australia) 1988  
 Prepared by G. (Geology) 1988  
 Copyright by A.A. (Australia) 1988  
 Image Processing by M. (Map) and J. (Image) 1988  
 It is a reproduction of the map as published in the AGSO 1:100 000 Woomera/Kooly Milka Regolith - Landforms 1:100 000 map sheet.  
 Regolith Landforms polygons are based on interpretation of enhanced Landsat TM imagery.  
 Digital Elevation Models (DEM) and 1:100 000 gridded maps.