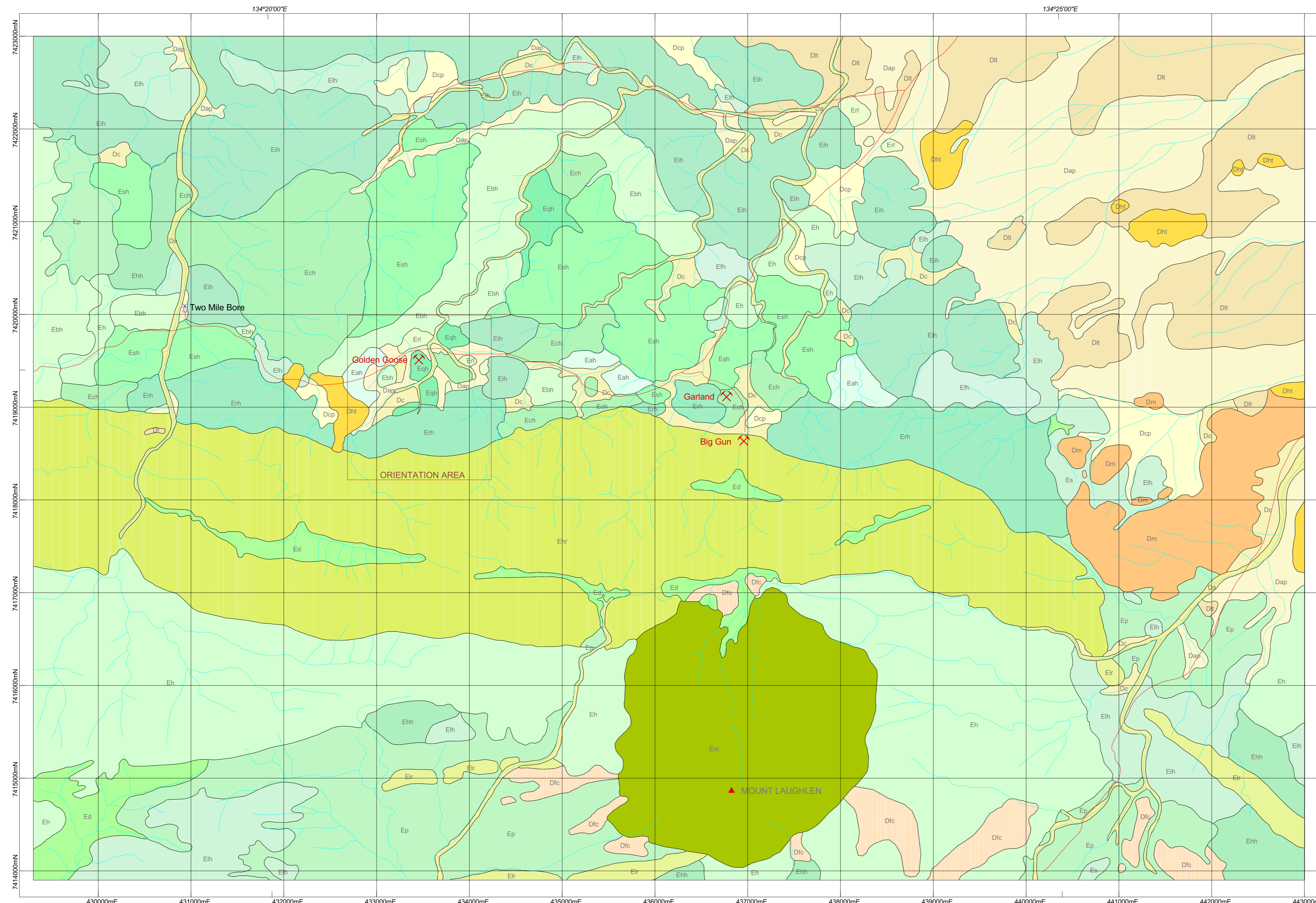


# REGOLITH-LANDFORM MAP OF WINNECKE GOLDFIELD, NORTHERN TERRITORY

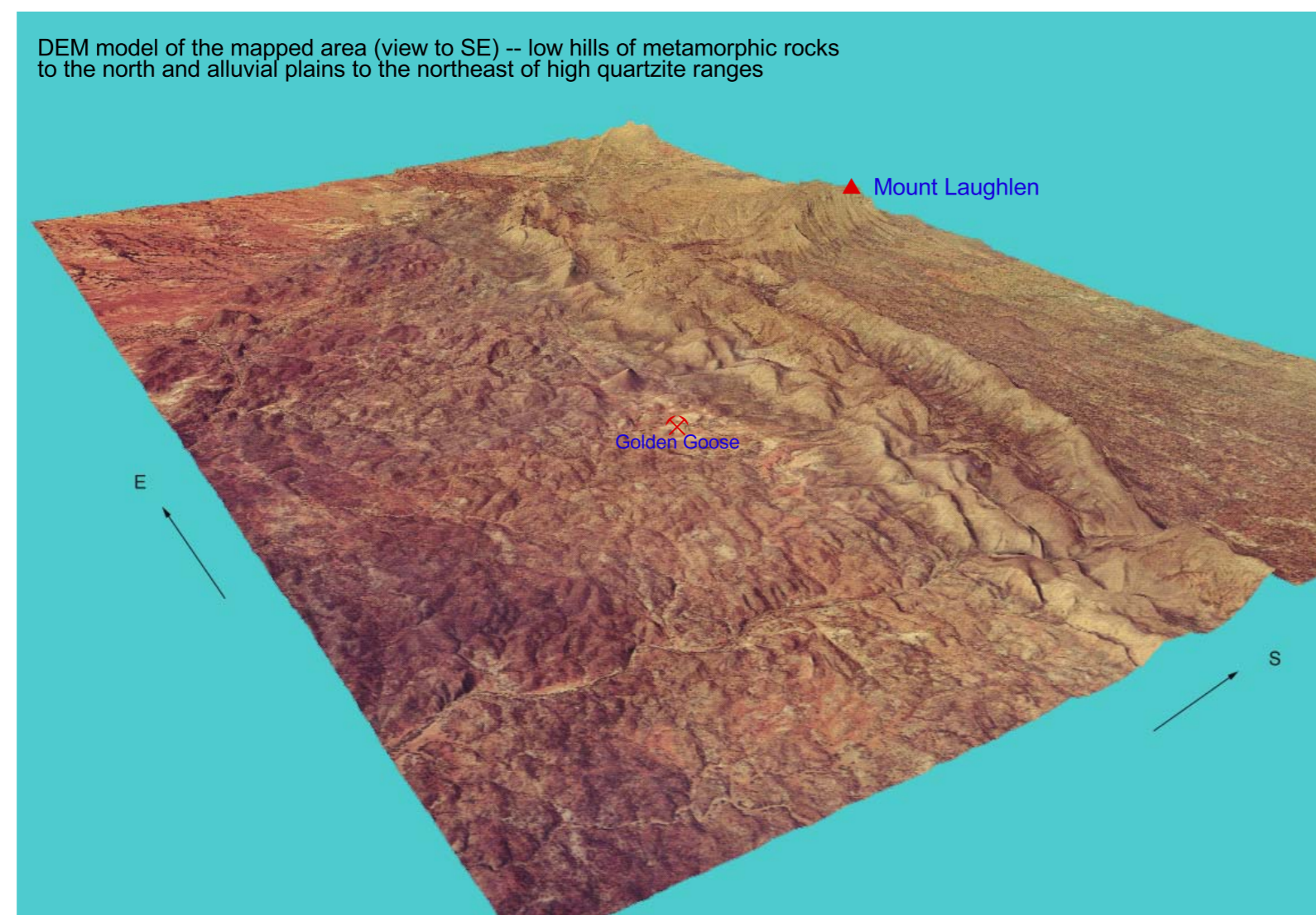
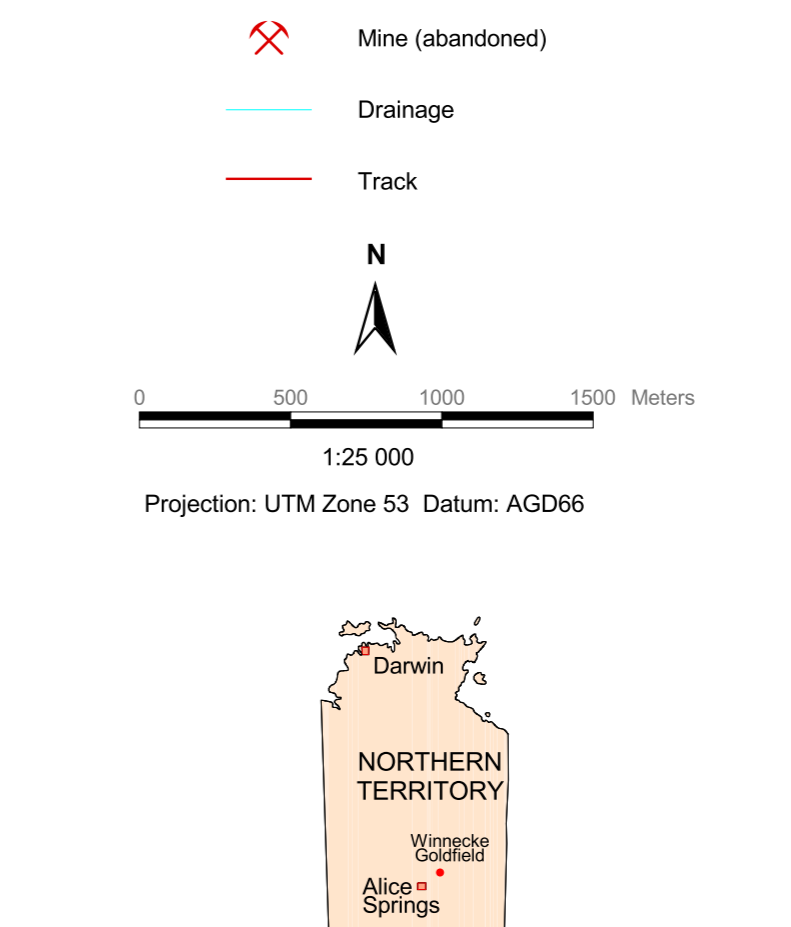


## EROSIONAL REGIME

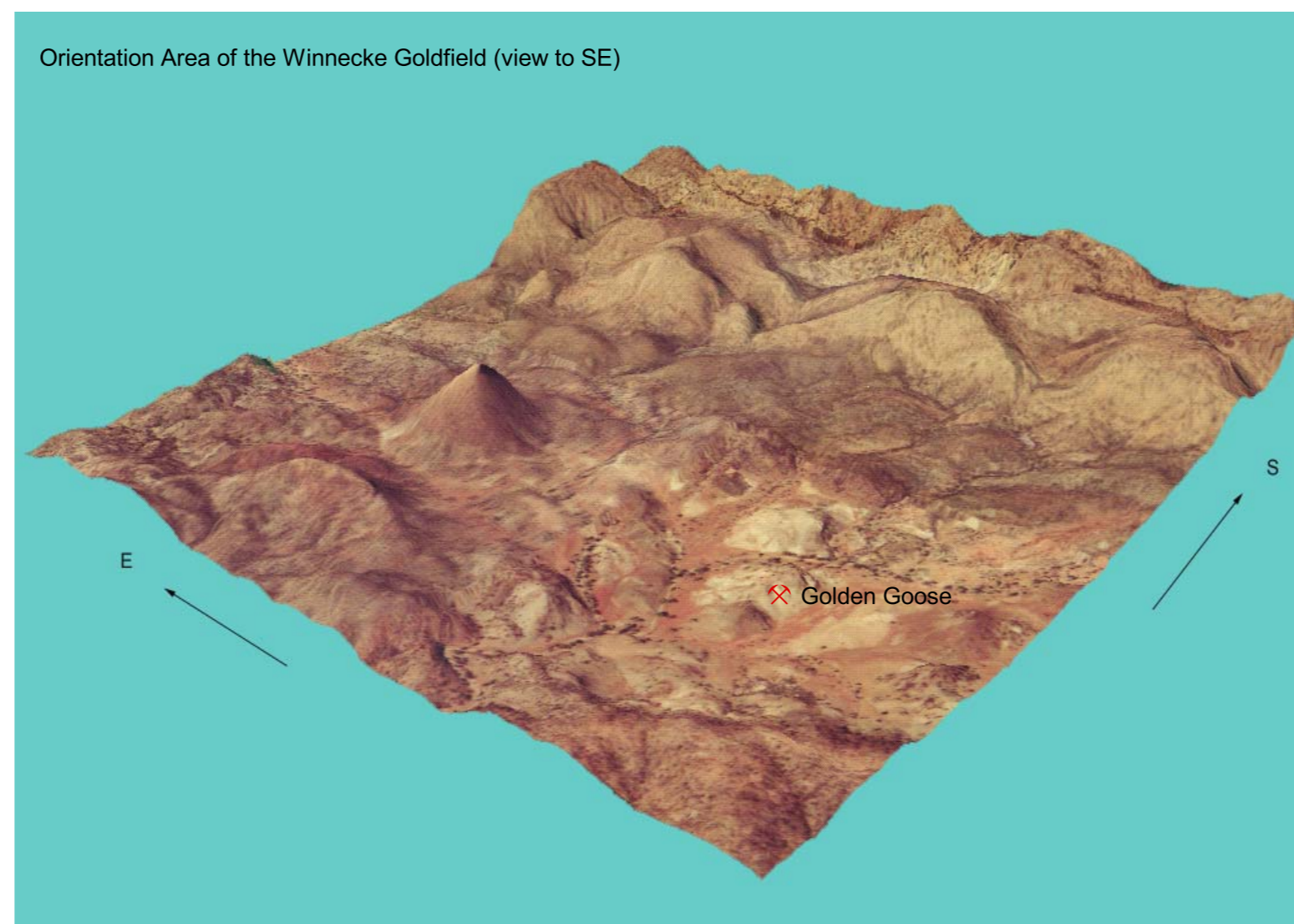
- Eah** Hills on slightly weathered amphiboles and associated metamorphic rocks (mainly gneiss and marble)
- Eeh** Hills on slightly weathered biotite schist
- Eeh** Hills on slightly weathered calc-silicate rock
- Eeh** Hills on slightly weathered quartzfeldspathic gneiss
- Eeh** Hills on slightly weathered cordierite, biotite and garnet gneiss and metamorphic rocks of greenschist facies
- Eeh** Hills on slightly weathered gneiss with vein quartz
- Eeh** Hills on slightly weathered retrograde quartzfeldspathic gneiss
- Eeh** Hills on slightly weathered muscovite-biotite schist, gneiss or quartzfeldspathic gneiss
- Eeh** Rugged remains of low relief with outcrop or sub-crops of slightly weathered metamorphic rocks
- Ed** Actively dissecting pediments with a veneer of lithic soil or lag of lithic fragments on saprock
- Eh** Low hills on slightly weathered metamorphic rocks
- Ehh** High hills on slightly weathered metamorphic rocks
- Er** Low ranges of saprock on quartzite and slightly metamorphosed sandstone
- Ehr** High ranges of slightly weathered, thickly bedded quartzite and sandstone
- Em** High mountains of slightly weathered, thickly bedded quartzite and sandstone
- Et** Low rises consisting of erosional remnants of highly weathered metamorphic rocks
- Es** Low hills and gentle slopes of bleached saproite on gneissic rock
- Ep** Unfolding erosional plains with a veneer of lithic soil on saprock

## DEPOSITIONAL REGIME

- Da** River channels with quartz, mica and garnet sands and unconsolidated fluvial sediments
- Dap** Gently undulating alluvial plains with sand- or clay-rich alluvium and colluvium, overbank sediments or slope-wash detritus
- Dr** Lower river terraces consisting of clay-rich soil on sand and gravel deposits
- Drt** Higher river terraces with lag of river gravel and quartz fragments on saproite and saprock of gneiss and schist
- Dc** Pediments consisting of lithic fragments in colluvium and sheetwash detritus
- Dcp** Colluvial plains and wash plains with sand- or clay-rich soil on colluvium and sheetwash detritus
- Df** Hill cappings of massive ferricrete in fluvial sediments consisting of river sand, gravel and boulders
- Dfc** Fluvial ridges on ferruginous colluvium and outwash detritus from high ranges and mountains
- Dm** Masses of massive siltcrete on fluvial sediments and erosional remnants of siltcrete forming hard caps on saproite on gneissic rocks



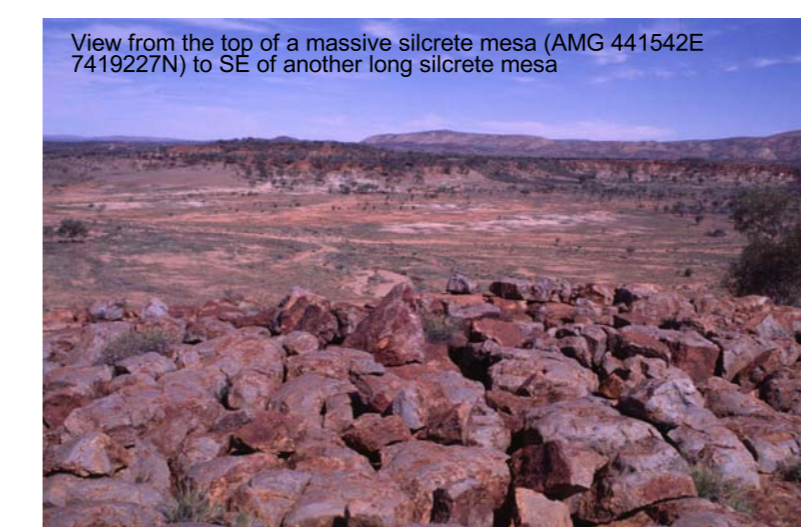
DEM model of the mapped area (view to SE) – low hills of metamorphic rocks to the north and alluvial plains to the northeast of high quartzite ranges



Orientation Area of the Winnecke Goldfield (view to SE)



Ferricrete (AMG4305664E 7418833N) on the quartzite range overlooking the Winnecke Goldfield to ENE



View from the top of a massive siltcrete mesa (AMG 441542E 7418227N) to SE of another long siltcrete mesa

Regolith and landforms by Li Shu (CRC LEME, CSIRO), 1999. GIS by Li Shu and Vicor Graphics. GIS Mapping & 3D imaging. Based on interpretation of aerial photographs and field observations. Published by CRC LEME, CSIRO

© CRC LEME 1999  
This work is copyright. Apart from any fair dealings for the purpose of study, research, criticism or review, as permitted under the Copyright Act, no part may be reproduced by any process without written permission. Copyright is the responsibility of the Director, CRC LEME.  
Inquiries should be directed to:  
The Director  
CRC LEME  
c/- CSIRO Exploration and Mining  
Private Bag  
Wentley, WA6014  
Tel: (08) 93382272; Fax: (08) 93381146

CRC LEME does not warrant that this map is definitive, nor free from error and does not accept liability for any loss caused or arising from reliance upon information provided herein.

**RESTRICTED CIRCULATION**  
THIS MAP HAS BEEN PREPARED EXCLUSIVELY FOR THE NORTHERN TERRITORY GEOLOGICAL SURVEY AS PART OF THE CRC LEME ARSOS PROJECT AND IS NOT TO BE GIVEN ADDITIONAL DISTRIBUTION OR REPRODUCED IN ANY MANNER WITHOUT THE CONSENT OF THE DIRECTOR OF THE COOPERATIVE RESEARCH CENTRE FOR LANDSCAPE EVOLUTION AND MINERAL EXPLORATION.

Warning: Inks are water soluble and will fade with prolonged exposure to light

