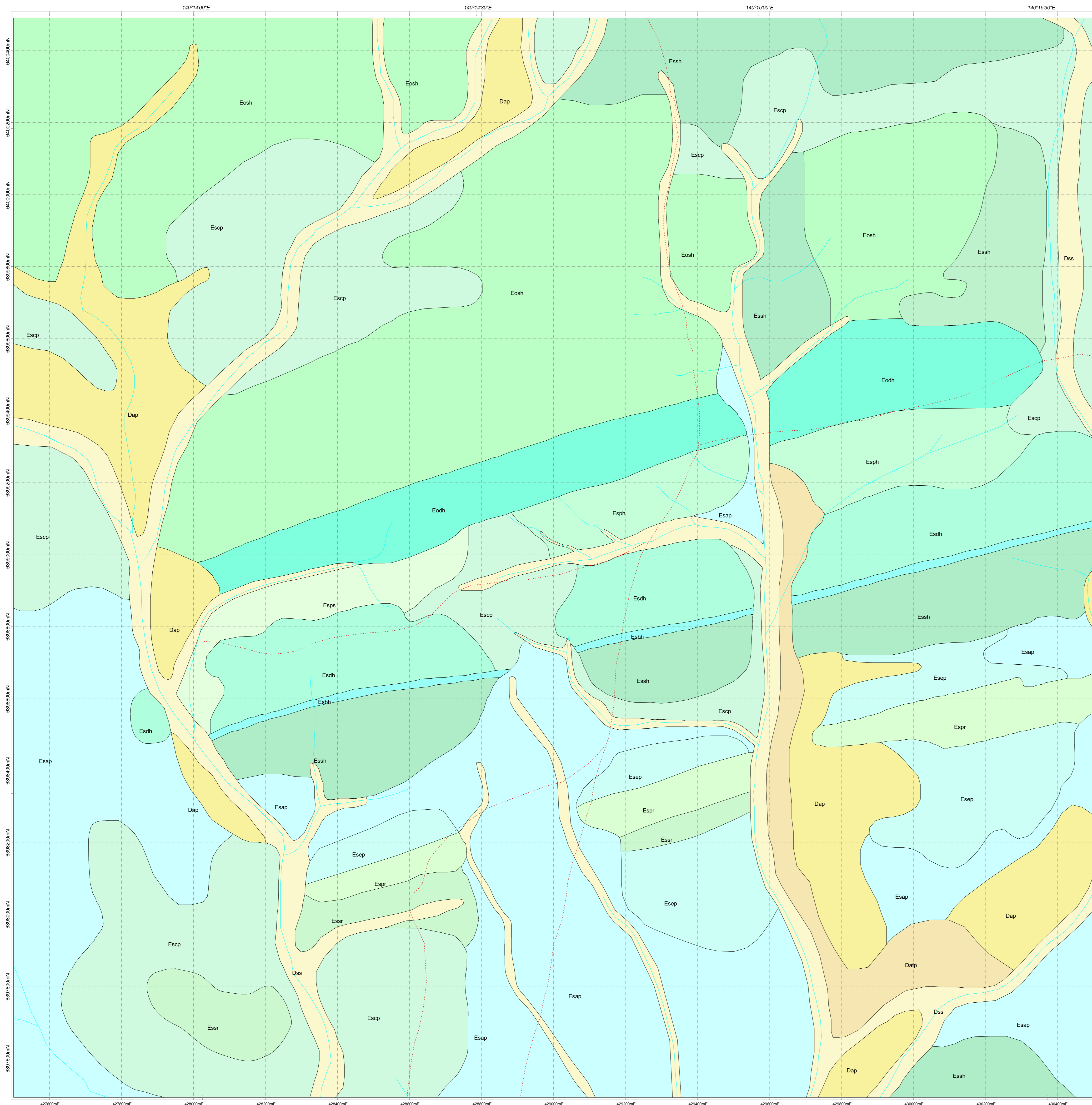


REGOLITH-LANDFORM MAP OF PART OF THE WADNAMINGA GOLDFIELDS

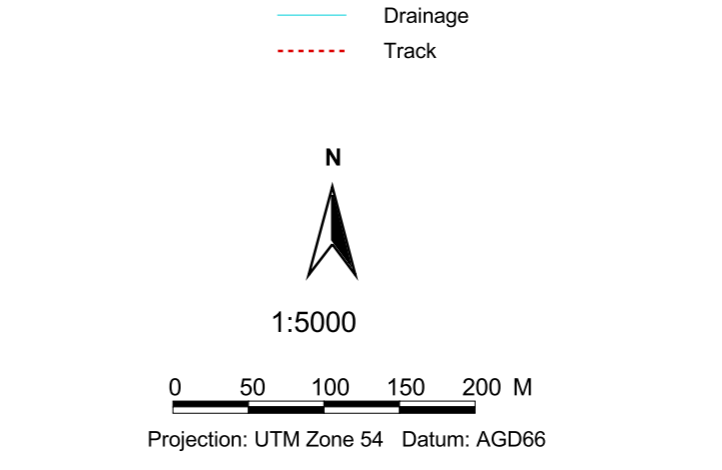
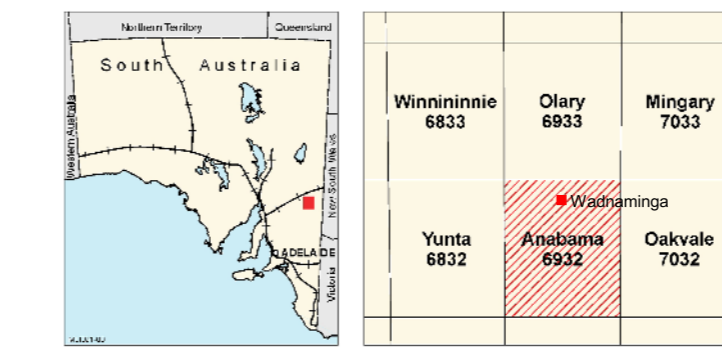


EROSIONAL REGIME

- Eosh** Slightly weathered calcareous siltstones and massive dolomites containing mica flakes, with interbedded phyllites near the base. High hills.
- Esdh** Saprock on interbedded sandy dolomites, calcareous siltstones and grey siltstones with iron oxide pseudomorphs after pyrite, and calcareous phyllites with sandy dolomites. High hills.
- Essh** Lithic fragments on saprock and slightly weathered siltstone and mudstone. Hills.
- Eosh** Slightly weathered siltstone, mudstone and phyllites. Hills.
- Eshh** Saprock on siltstones with iron oxide pseudomorphs after pyrite forming bowenks due to hydrolytic weathering. Low hills.
- Espr** Saprock on interbedded calcareous siltstone, micaceous phyllites and sandy siltstone. Low rises.
- Espr** Saprock on interbedded micaceous phyllites, calcareous siltstone and sandy siltstone. Low rises.
- Esph** Saprock on interbedded phyllites and sandy siltstones containing iron oxide pseudomorphs after pyrite. Hills.
- Esps** Saprock on interbedded phyllites and grey sandy siltstones containing iron oxide pseudomorphs after pyrite. Hillslopes.
- Eshs** Thin proximal colluvium and locally-derived lithic fragments on saprock. Hillslopes.
- Escp** Thin proximal colluvium and locally-derived lithic fragments on saprock. Gently sloping pediments.
- Esap** Lags of lithic fragments and thin soil on saprock. Undulating erosion plains.
- Esap** Thin proximal colluvium/alluvium mixed with locally-derived lithic fragments on saprock. Erosion plains.

DEPOSITIONAL REGIME

- Das** Unconsolidated fluvial sands and gravel. Modern stream channels.
- Dap** Brown soil with lenses of nodular calcretes on clay-rich alluvium and colluvium, steepbank sediments or slope-wash detritus. Flat alluvial plains.
- Dalp** Coarse sediments and gravel cemented by carbonates. Floodplains along the main drainage.



Regolith and landforms by Li Shu (CRC LEME, CSIRO), 2000. GIS by Li Shu. Based on interpretation of aerial photographs and field observations. Published by CRC LEME, CSIRO.

© CRC LEME 2001
This work is copyright. Apart from any fair dealings for the purpose of study, research, criticism or review, as permitted under the Copyright Act, no part may be produced by any process without written permission. Copyright is the responsibility of the Director, CRC LEME.

Inquiries should be directed to:
The Director
CRC LEME
c/- CSIRO Exploration and Mining
Private Bag
Wentley, WA6014
Tel: (08) 93336272; Fax: (08) 93336146

CRC LEME does not warrant that this map is definitive, nor free from error and does not accept liability for any loss caused or arising from reliance upon information provided herein.

Warning: This site may contain water and will have with prolonged exposure to light

