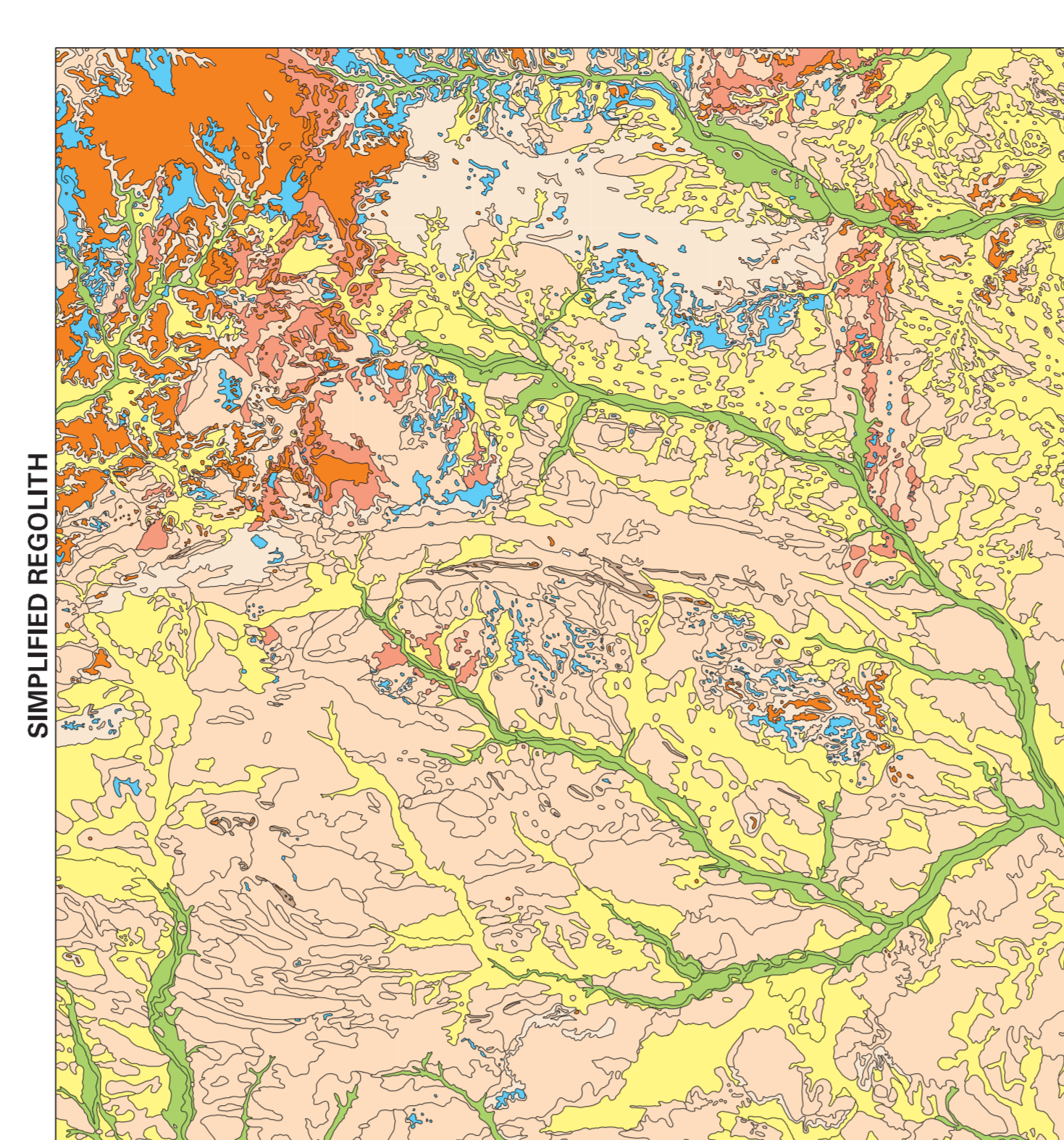
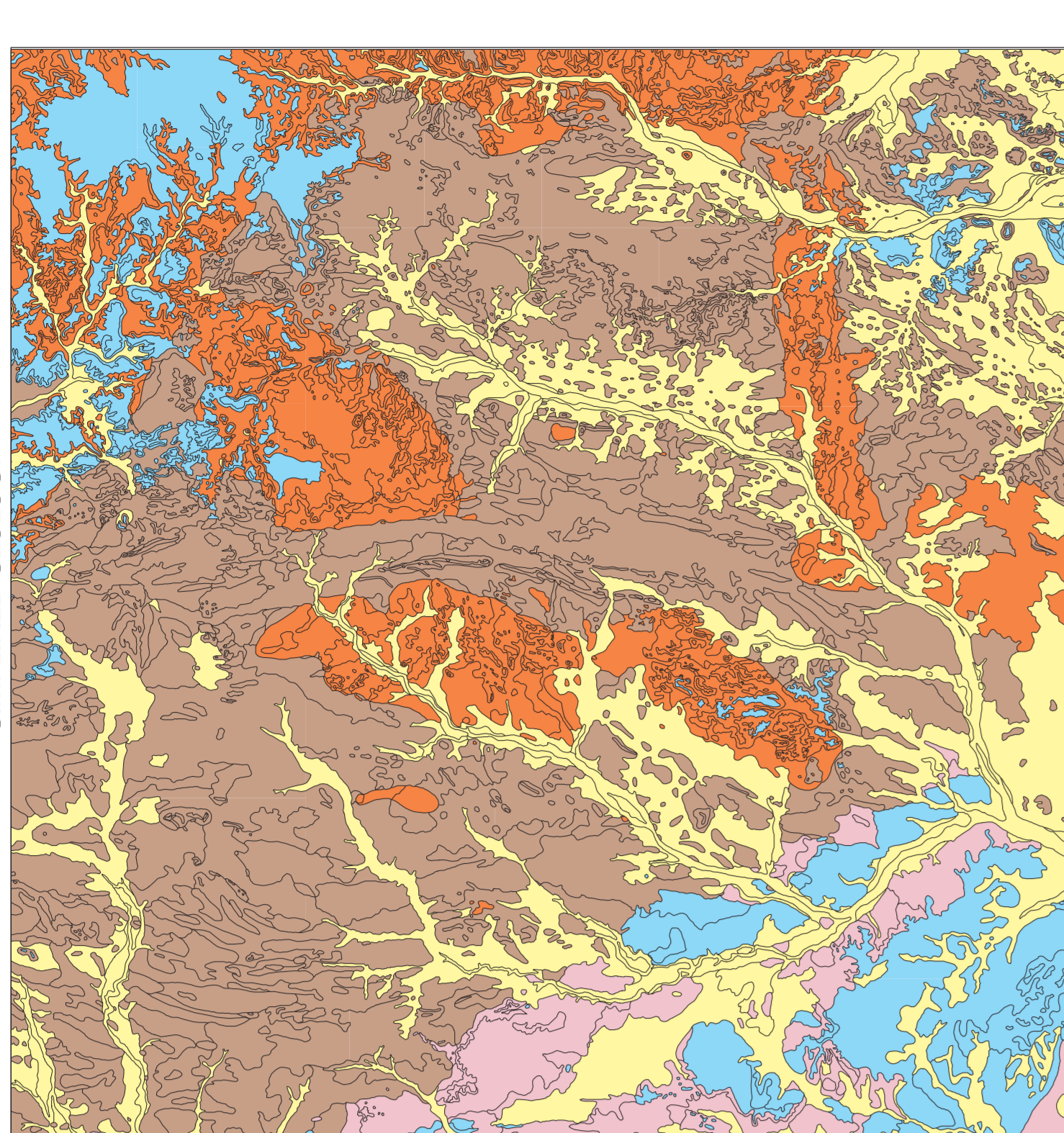
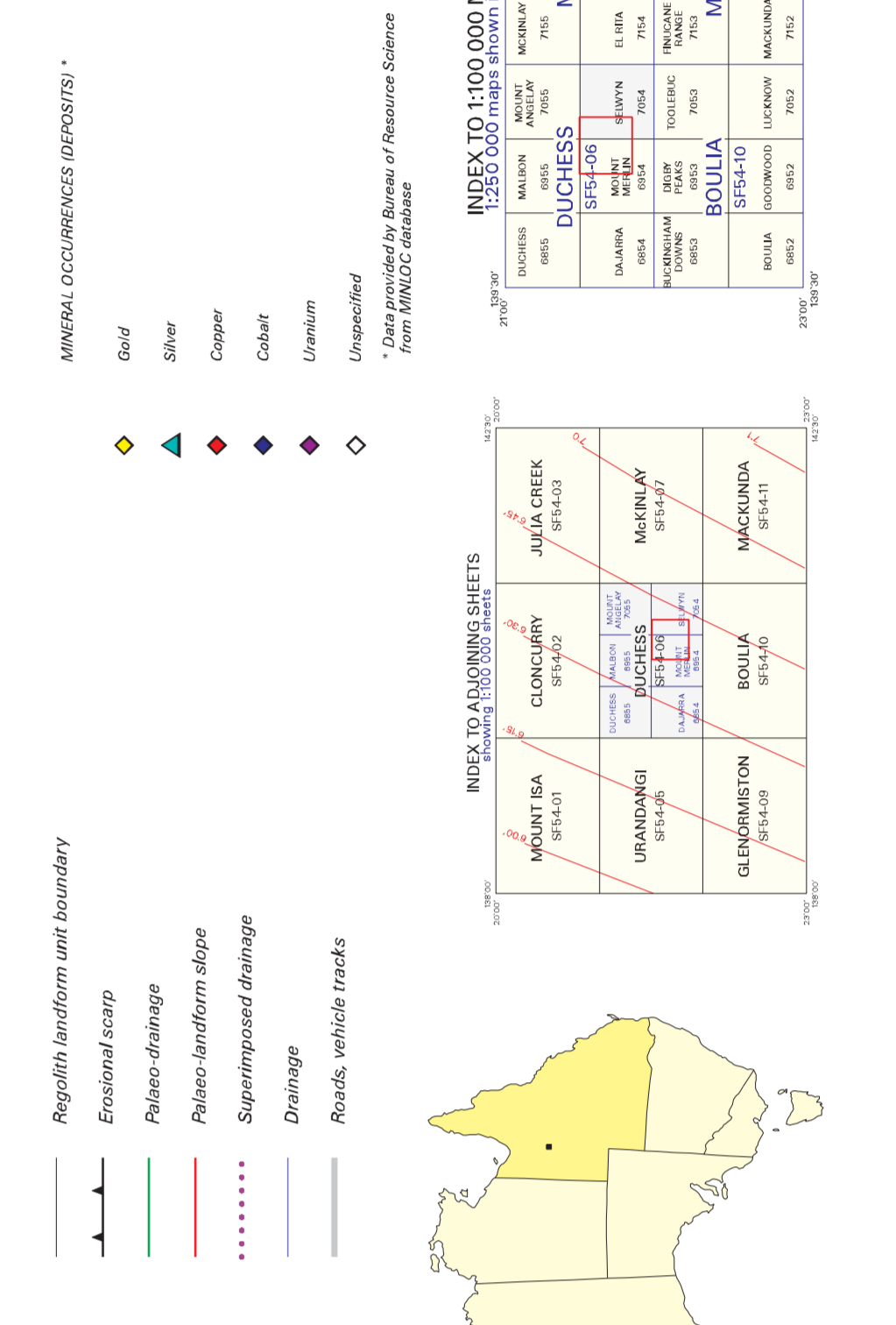
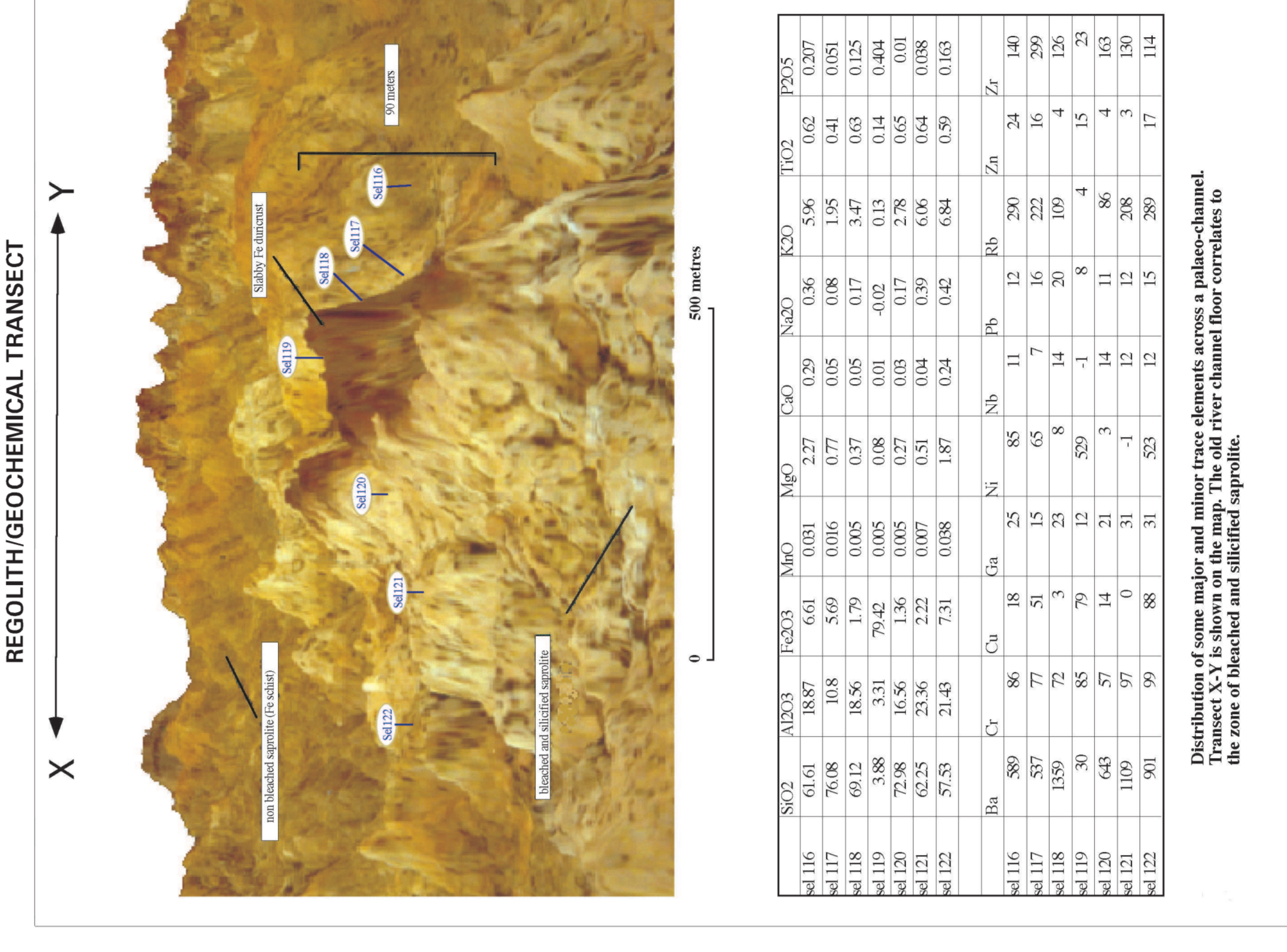
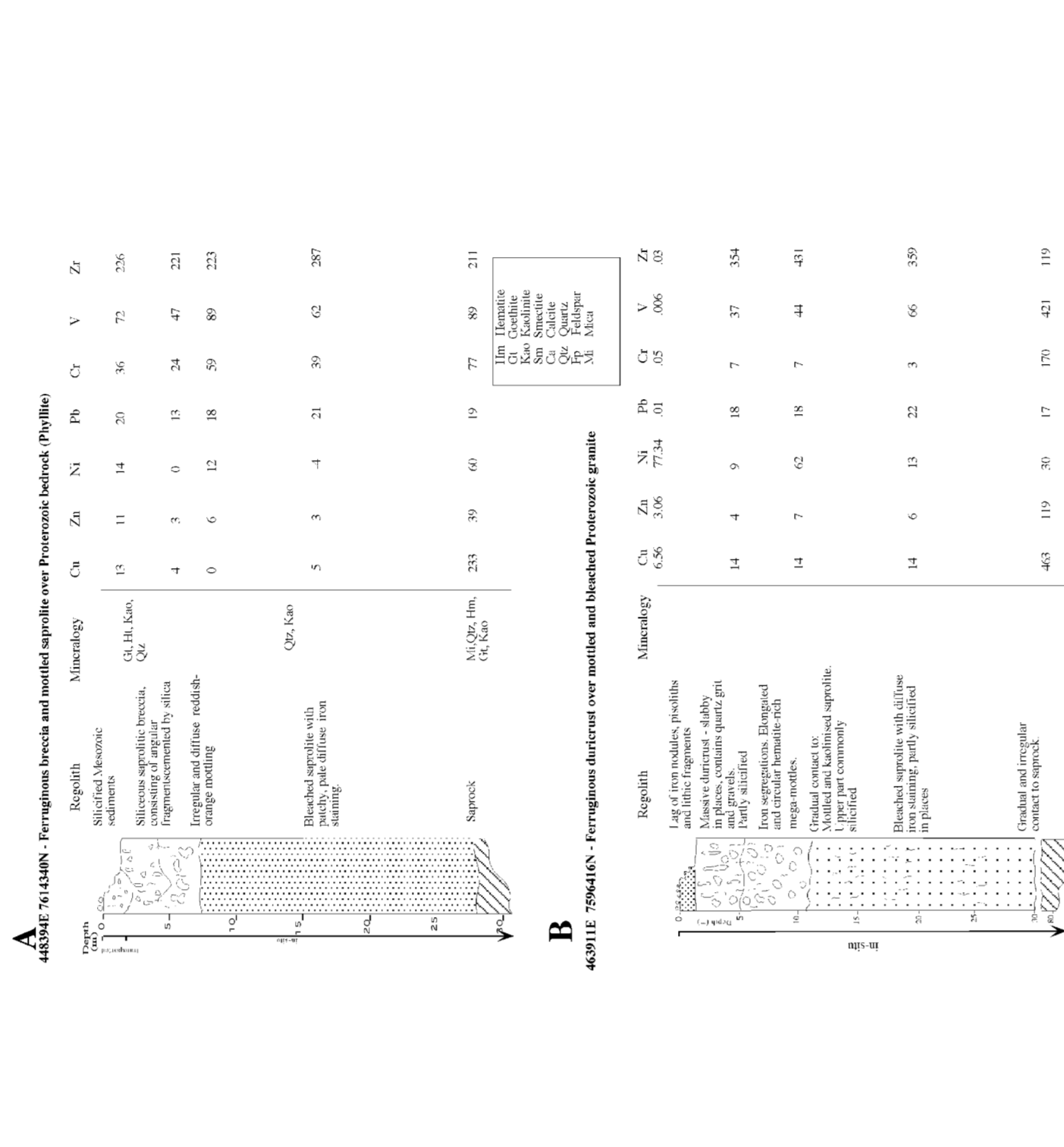


- Ductile**
- Pre-Permian
  - Permian
  - Post-Permian
- Saprolite and skeletal soils**
- Pre-Permian
  - Permian
  - Post-Permian
- Saprolite covered by extensive lags and thin residual soils**
- Pre-Permian
  - Permian
  - Post-Permian
- Aluminium**
- Pre-Permian
  - Permian
  - Post-Permian
- Colluvium**
- Pre-Permian
  - Permian
  - Post-Permian

**REGOLITH-GEOCHEMICAL SAMPLING GUIDE \***

Interpretative geochemical sampling strategy maps are developed to guide the selection of sampling locations for regolith geochemical analysis. The maps are based on the interpretation of aerial photographs and satellite imagery, and are used to identify areas of regolith that are likely to contain mineral resources. The maps are developed using a range of criteria, including the type of regolith, the degree of weathering, and the presence of mineral resources. The maps are used to guide the selection of sampling locations for regolith geochemical analysis. The maps are developed using a range of criteria, including the type of regolith, the degree of weathering, and the presence of mineral resources.

**REGOLITH-GEOCHEMICAL PROFILES**



AMIRA  
 AMERICAN MINERAL INVESTMENT MANAGEMENT ASSOCIATION LIMITED

CRC LEME  
 COMMONWEALTH RESEARCH CENTRE FOR LANDFORM EVOLUTION

Copyright © 2012 AMIRA. All rights reserved. This document is the property of AMIRA and is not to be distributed, copied, or otherwise used without the prior written consent of AMIRA.