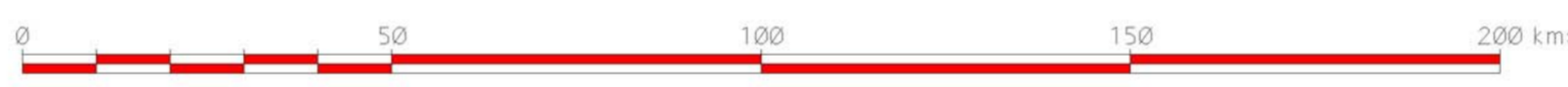
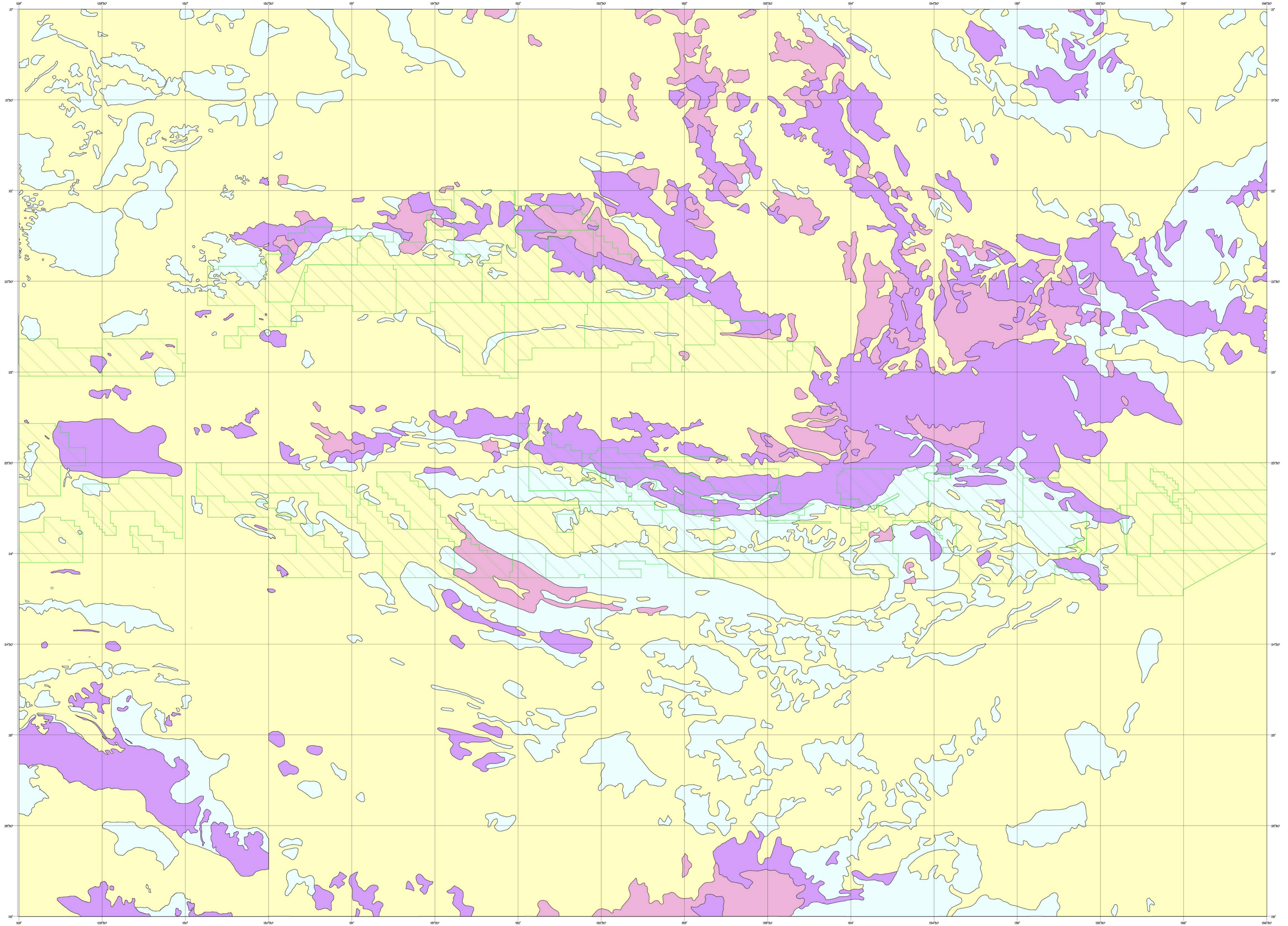
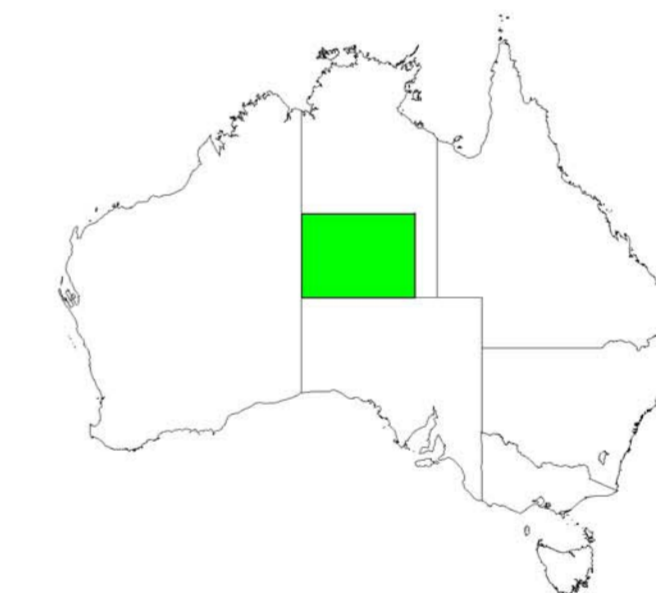


Regolith-Landform Terrain Status: Rand Project



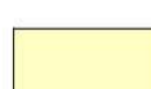



Scale 1: 1,000,000



Location Map



LEGEND

-  Depositional Terrain: Quaternary-Holocene sediments
-  Relict Terrain: preserved weathering profiles on "metamorphics" and sediments
-  Erosional Terrain: eroding "metamorphics"
-  Erosional Terrain: eroding sediments