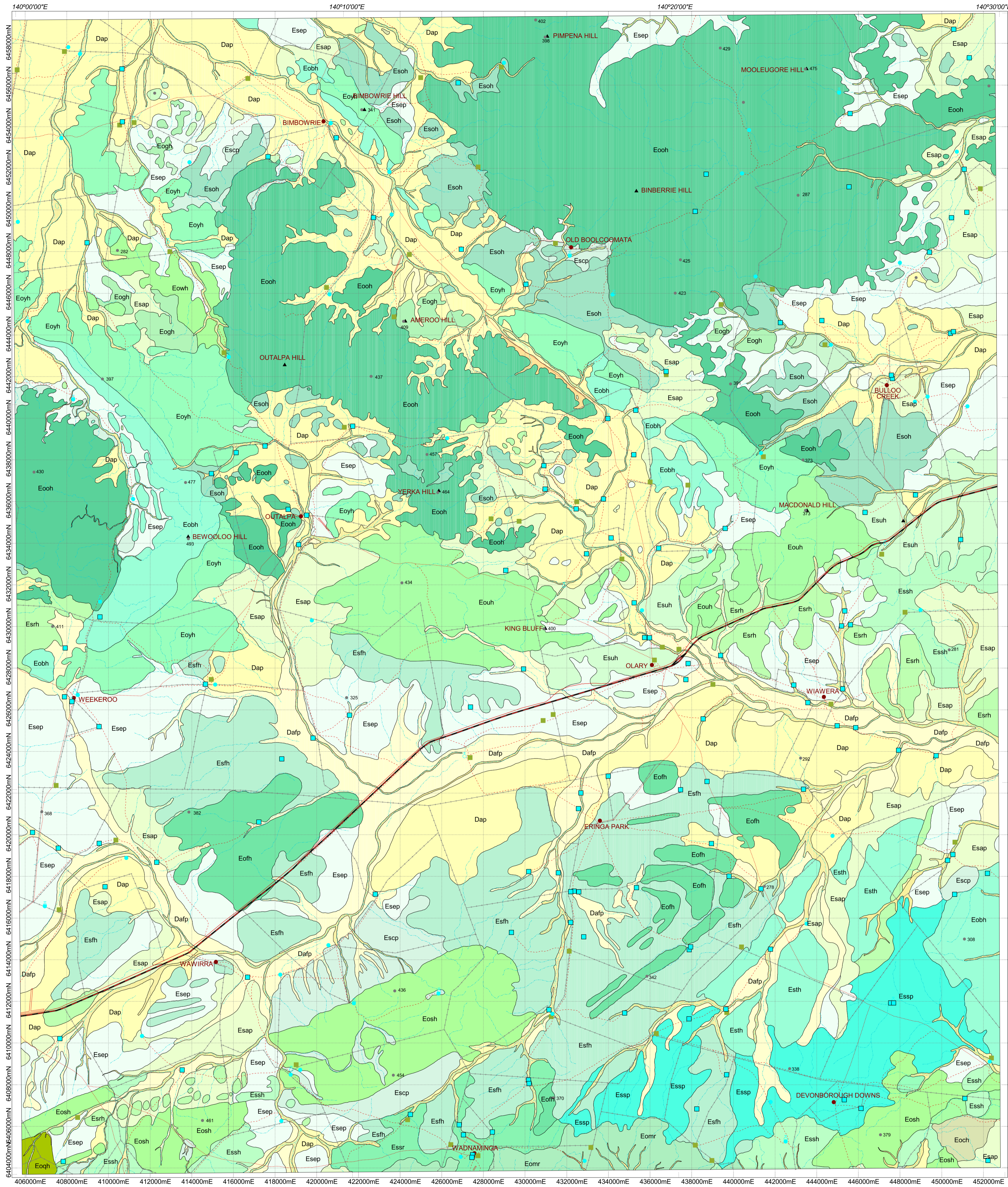


REGOLITH-LANDFORM MAP OF OLARY, SOUTH AUSTRALIA

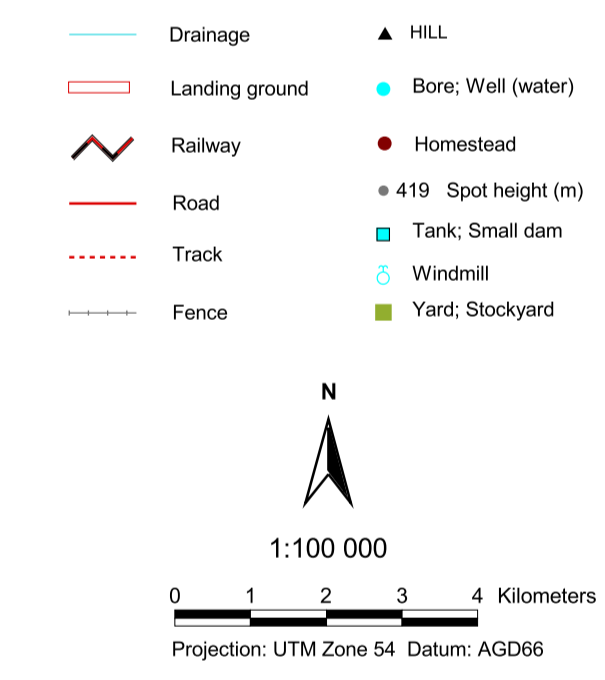


EROSIONAL REGIME

- Eooh** Slightly weathered siltstone, sandstone and dolomite of Burra Group. Low hills.
- Eoeh** Slightly weathered conglomerates of Pualco Tillite. Low hills.
- Esoh** Saprock on dolomitic siltstone of Tapley Hill Formation. Low hills.
- Esar** Saprock and slightly weathered bedrock of mainly siltstone and mudstone in actively stripping belts. Low ranges.
- Esrh** Saprock on various siltstones and mudstones of Umberatina Group. Remnant hills.
- Eooh** Slightly weathered siltstone, limestone and sandstone of Farina Supergroup. Low hills.
- Esoh** Fragments of saprock on siltstone, limestone and sandstone of Farina Supergroup. Low hills.
- Eooh** Slightly weathered siltstones of the Umberatina Group. Low hills.
- Esuh** Saprock on various siltstones of the Umberatina Group. Low hills.
- Eowh** Slightly weathered green siltstone of Willyerpa Formation. Low hills.
- Eswh** Fragments of saprock on green siltstone of Willyerpa Formation. Low hills.
- Eoyh** Slightly weathered siltstone and limestone of Yambah Subgroup. High hills.
- Eooh** Slightly weathered metamorphics of the Willyama Supergroup (late Palaeoproterozoic basement) with occasional granitoid intrusions. High hills.
- Esoh** Saprock on metamorphics of the Willyama Supergroup (late Palaeoproterozoic basement). Hills.
- Eogh** Fresh or slightly weathered granitic rocks without accumulation of weathered products. Hills.
- Eogh** Slightly weathered granitic rocks with concretion and tors. Low hills and rises.
- Eomr** Lags of rock fragments on mudstone, siltstone and shale, slightly weathered fractures and beddings. Long ranges with parallel valleys.
- Eoqh** Slightly weathered quartzite, sandstone and siltstone without regolith cover. High hills.
- Eosh** Slightly weathered quartzite, sandstone and shale - rock mechanical breakdown produce colluvial materials. Low hills.
- Esah** Lags of siltstone, mudstone and shale fragments on saprock, and in places saprock is developed along fracture zones or drainage line. Low hills.
- Esap** Lags of lithic fragments on slightly weathered shales and siltstone. Undulating erosion plains.
- Escp** Thin proximal colluvium and locally-derived lithic fragments on saprock. Gently sloping pediments.
- Esap** Lags of lithic fragments and thin soil on saprock. Undulating erosion plains.
- Esap** Thin proximal colluvium/alluvium mixed with locally-derived lithic fragments on saprock. Erosion plains.

DEPOSITIONAL REGIME

- Dss** Unconsolidated fluvial sands and gravel. Modern stream channels.
- Dafp** Alluvium and fluvial gravels, commonly carbonate-cemented. Floodplains.
- Dap** Brown soil with lenses of nodular calcretes on clay alluvium and colluvium, overbank sediments or slope-wash debris. Flat alluvial plains.
- Daf** Brown soil with lags of river gravel and lenses of nodular calcretes on middle channel and overbank sediments. Gently sloping alluvial fans.



Regolith and landforms by Li Shu (CRC LEME, CSIRO), 2000. GIS by Li Shu. Based on interpretation of aerial photographs and field observations. Published by CRC LEME, CSIRO

© CRC LEME 2001
This work is copyright. Apart from any fair dealings for the purpose of study, research, criticism or review as permitted under the Copyright Act, no part may be reproduced by any process without written permission. Copyright is the responsibility of the Director, CRC LEME.

Inquiries should be directed to:
The Director
CRC LEME
c/o CSIRO Exploration and Mining
Private Bag
Wembley, WA 6014
Tel: (08) 9336272; Fax: (08) 9336146

CRC LEME does not warrant that this map is definitive, nor free from error and does not accept liability for any loss caused or arising from reliance upon information provided herein.
Warning: This is water soluble and will fade with prolonged exposure to light

