

Transported regolith

Alluvial sediments

- AEa1
AEa2
AEa3
AEa4
AEa5
AEa6
AEa7
AEa8
AEa9
AEa10
AEa11
AEa12
AEa13
AEa14
AEa15
AEa16
AEa17
AEa18
AEa19
AEa20
AEa21
AEa22
AEa23
AEa24
AEa25
AEa26
AEa27
AEa28
AEa29
AEa30
AEa31
AEa32
AEa33
AEa34
AEa35
AEa36
AEa37
AEa38
AEa39
AEa40
AEa41
AEa42
AEa43
AEa44
AEa45
AEa46
AEa47
AEa48
AEa49
AEa50
AEa51
AEa52
AEa53
AEa54
AEa55
AEa56
AEa57
AEa58
AEa59
AEa60
AEa61
AEa62
AEa63
AEa64
AEa65
AEa66
AEa67
AEa68
AEa69
AEa70
AEa71
AEa72
AEa73
AEa74
AEa75
AEa76
AEa77
AEa78
AEa79
AEa80
AEa81
AEa82
AEa83
AEa84
AEa85
AEa86
AEa87
AEa88
AEa89
AEa90
AEa91
AEa92
AEa93
AEa94
AEa95
AEa96
AEa97
AEa98
AEa99
AEa100

Evaporite

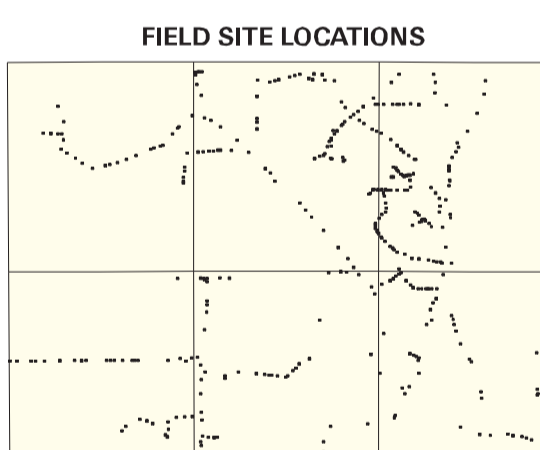
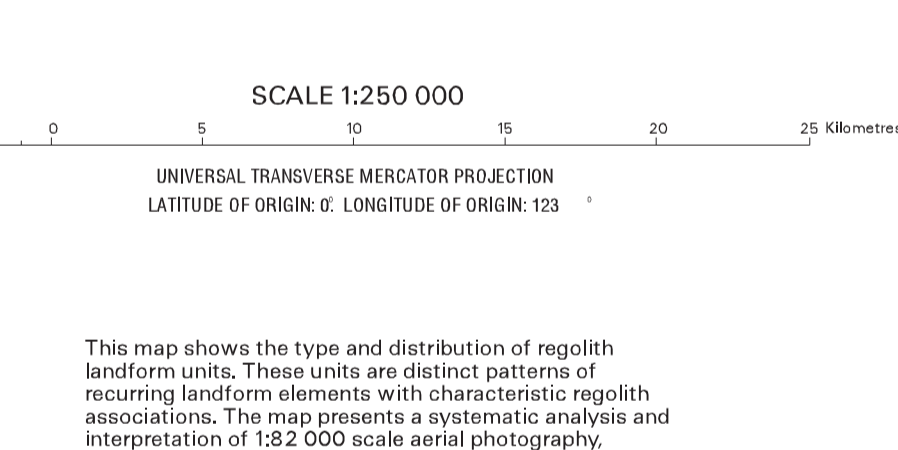
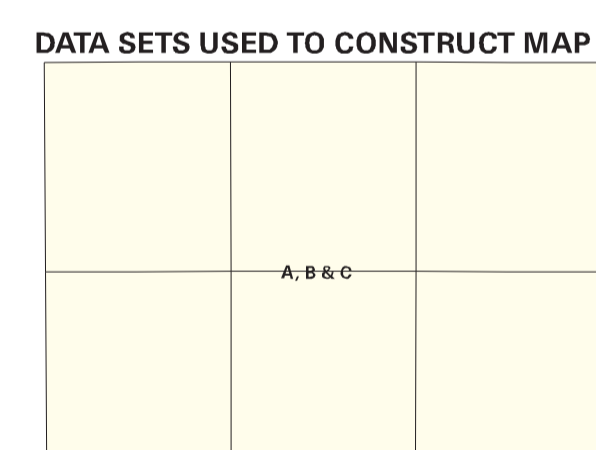
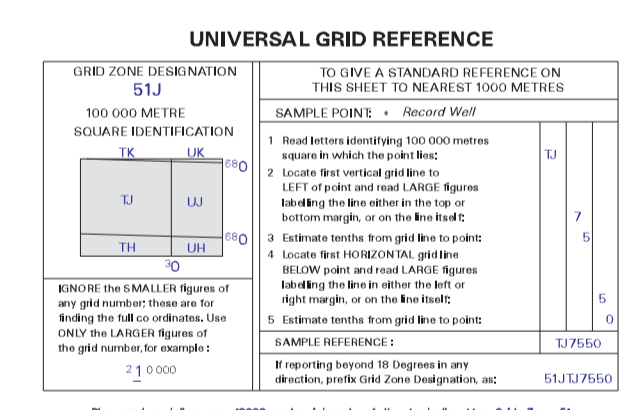
Lacustrine sediments

Lacustrine sediments

In-situ regolith

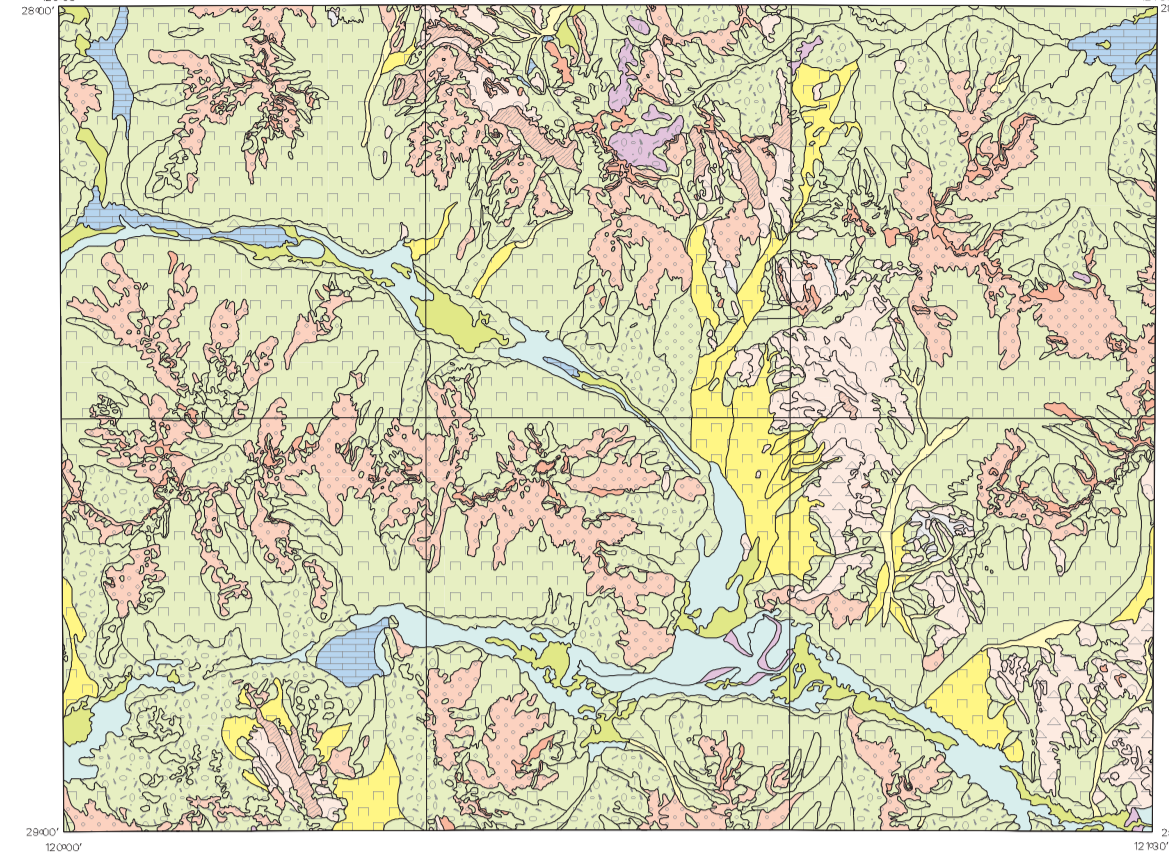
Saprolite

- ESa1
ESa2
ESa3
ESa4
ESa5
ESa6
ESa7
ESa8
ESa9
ESa10
ESa11
ESa12
ESa13
ESa14
ESa15
ESa16
ESa17
ESa18
ESa19
ESa20
ESa21
ESa22
ESa23
ESa24
ESa25
ESa26
ESa27
ESa28
ESa29
ESa30
ESa31
ESa32
ESa33
ESa34
ESa35
ESa36
ESa37
ESa38
ESa39
ESa40
ESa41
ESa42
ESa43
ESa44
ESa45
ESa46
ESa47
ESa48
ESa49
ESa50
ESa51
ESa52
ESa53
ESa54
ESa55
ESa56
ESa57
ESa58
ESa59
ESa60
ESa61
ESa62
ESa63
ESa64
ESa65
ESa66
ESa67
ESa68
ESa69
ESa70
ESa71
ESa72
ESa73
ESa74
ESa75
ESa76
ESa77
ESa78
ESa79
ESa80
ESa81
ESa82
ESa83
ESa84
ESa85
ESa86
ESa87
ESa88
ESa89
ESa90
ESa91
ESa92
ESa93
ESa94
ESa95
ESa96
ESa97
ESa98
ESa99
ESa100

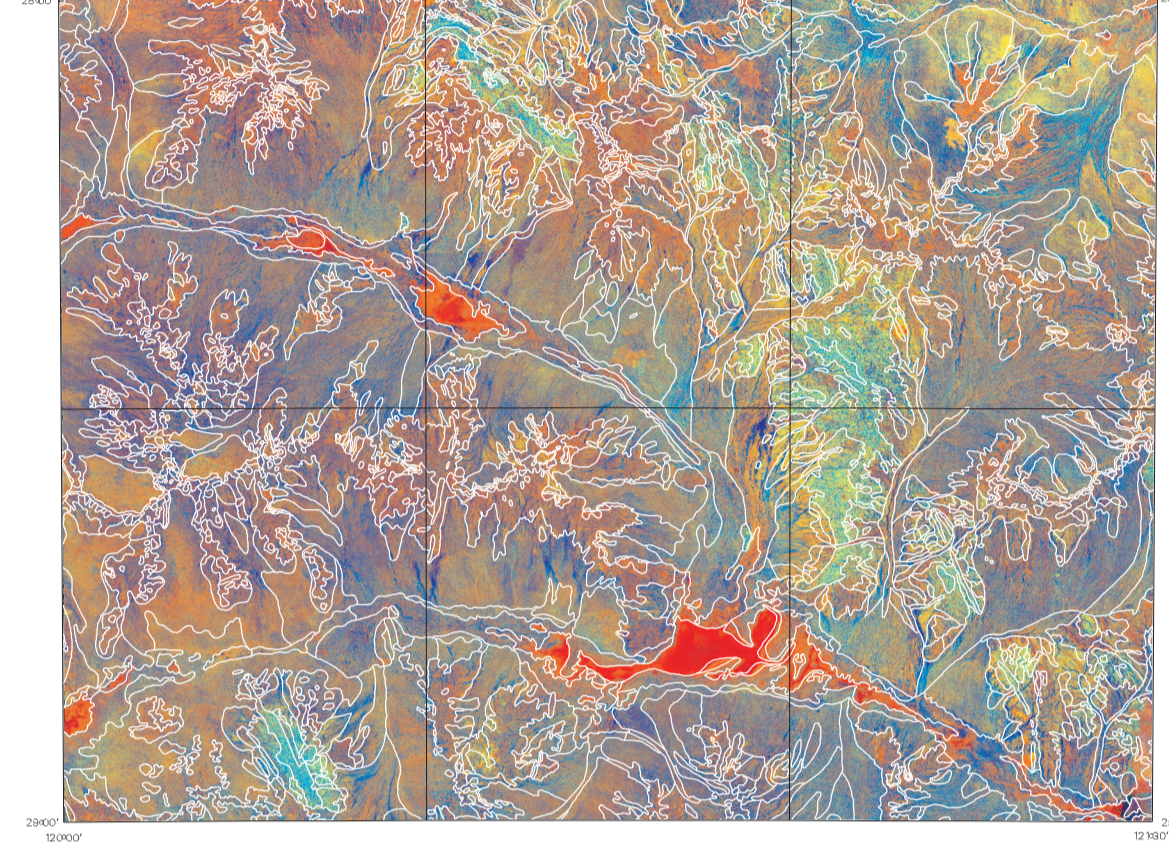


Regolith 1992 by H. M. Chubb, M. A. Craig, AGSO... Published by the Australian Geological Survey Organisation...

LEONORA REGOLITH LANDFORMS

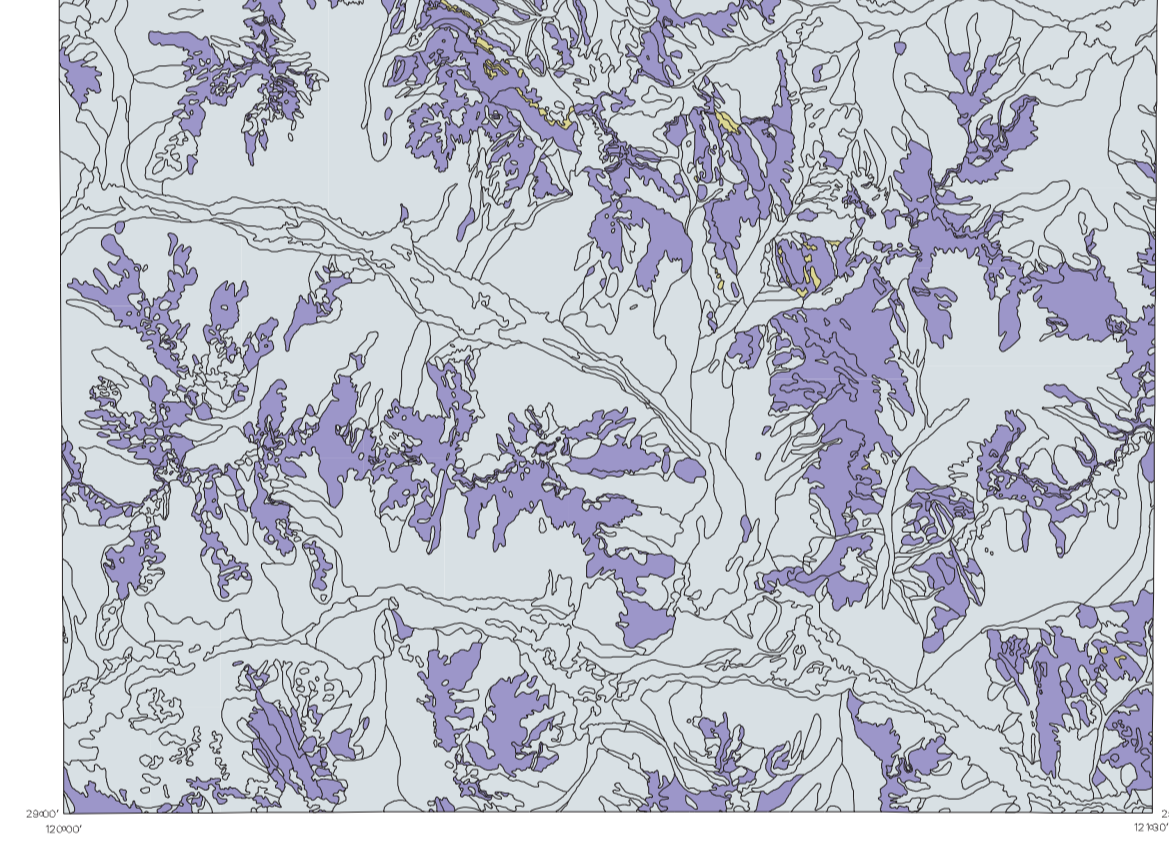


ENHANCED THEMATIC MAPPER IMAGE OF LEONORA WITH REGOLITH POLYGONS

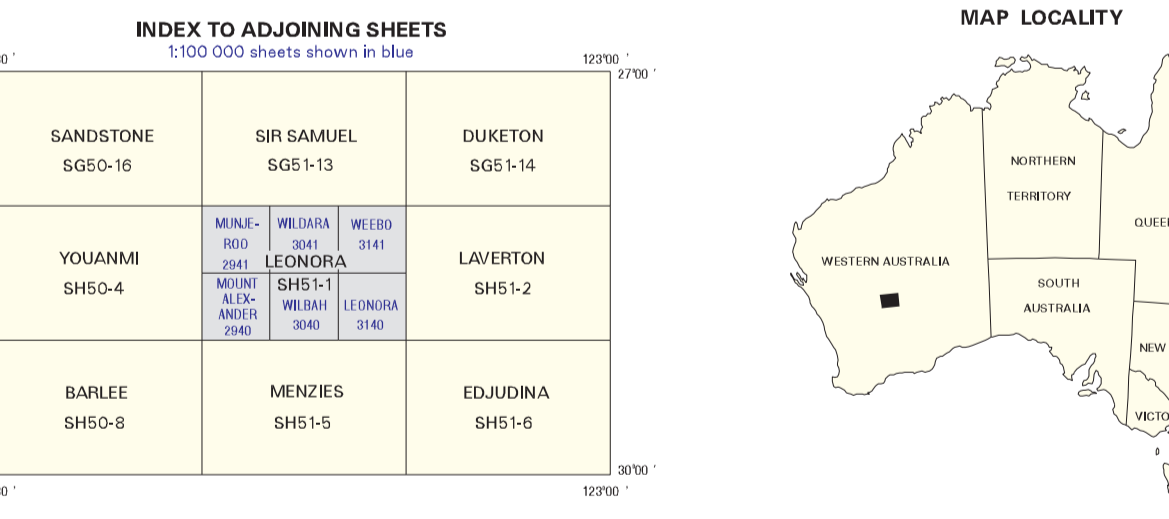


Red: Clay dominated surface response... Green: Iron oxide dominated surface response... Blue: Vegetation dominated surface response... Yellow: Vegetated regions on iron oxide dominated surface... Magenta: Vegetated regions on iron oxide dominated surface.

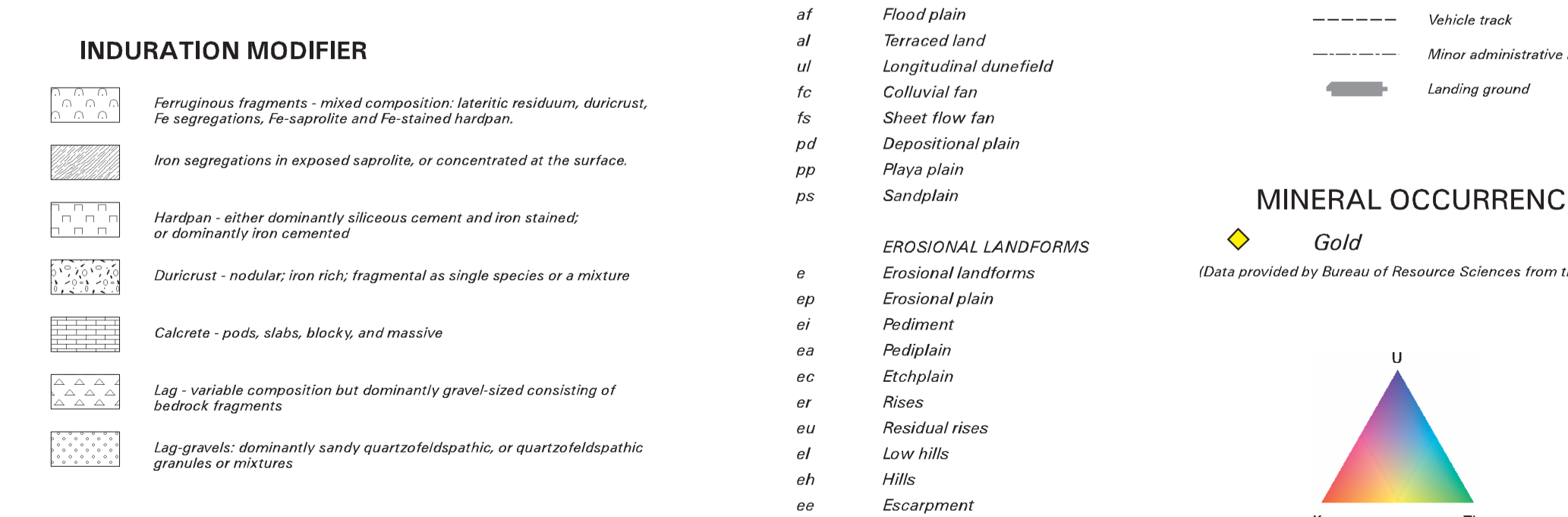
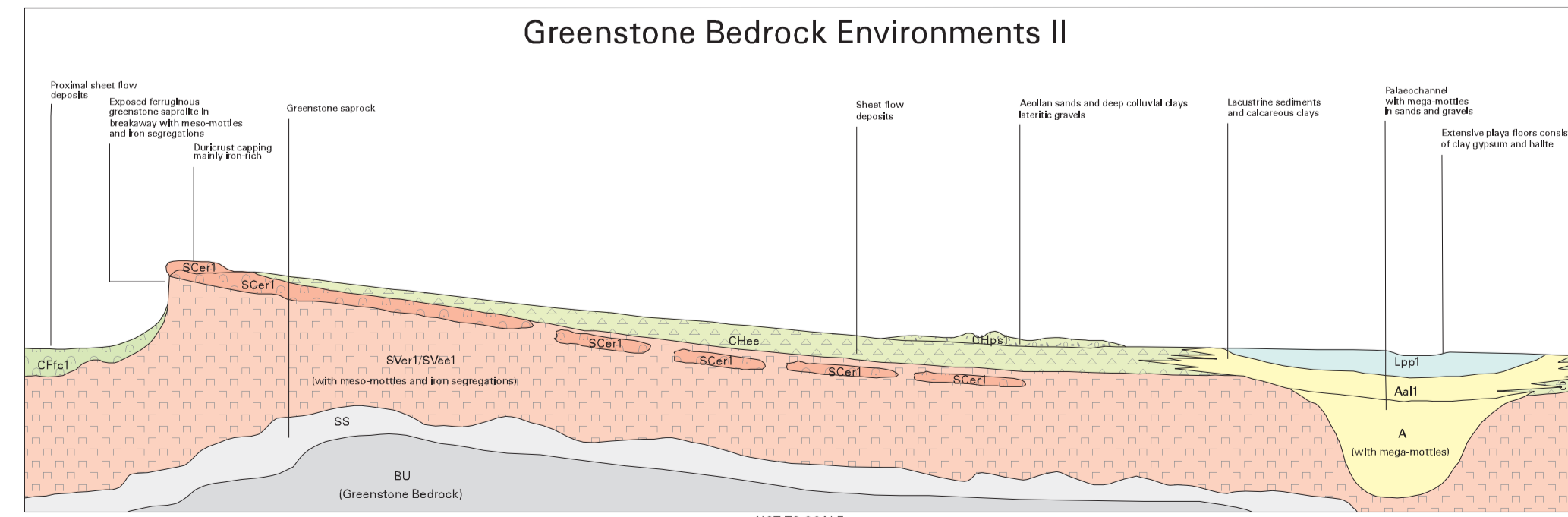
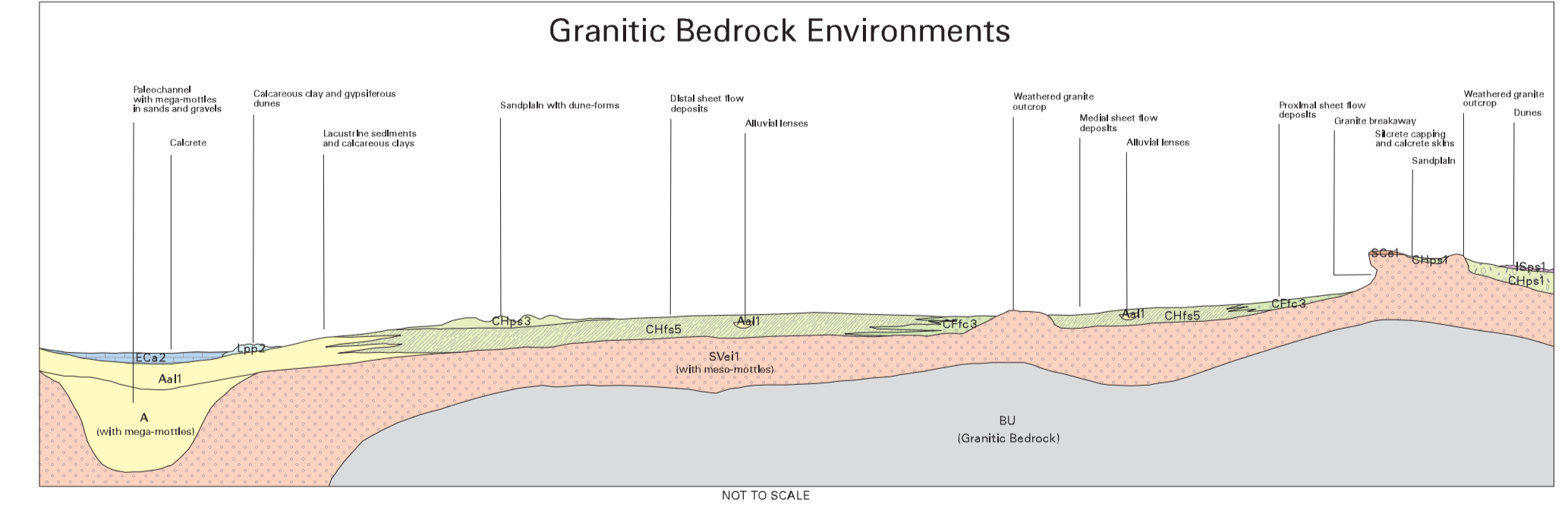
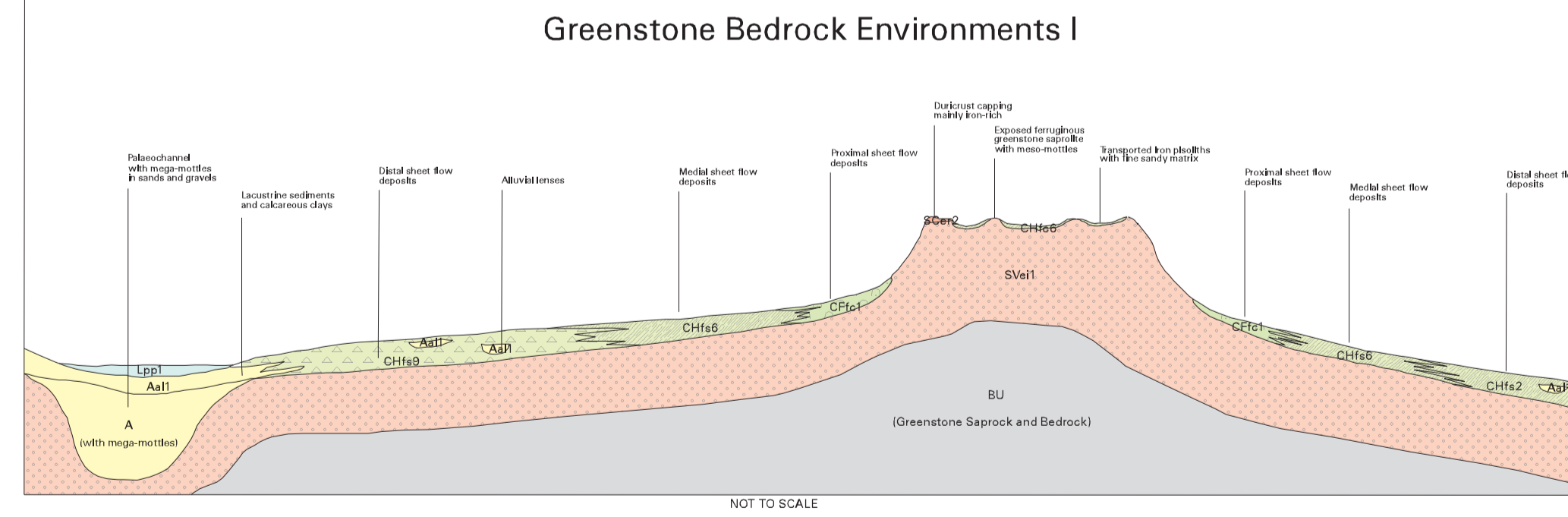
INTERPRETED LANDSCAPE CLASSES



Legend for interpreted landscape classes: Relict, Erosional, Depositional.



Regional Regolith Associations



DEPOSITIONAL LANDFORMS: ae, af, ag, ah, ai, aj, ak, al, am, an, ao, ap, aq, ar, as, at, au, av, aw, ax, ay, az. EROSIONAL LANDFORMS: e, ee, ef, eg, eh, ei, ej, ek, el, em, en, eo, ep, eq, er, es, et, eu, ev, ew, ex, ey, ez. MINERAL OCCURRENCE: Gold. RADIOMETRIC SIGNATURE: Red, Dark, Blue, Black to brown, White to yellowish.

NGMA PRODUCT OF THE NATIONAL GEOSCIENCE MAPPING ACCORD COLLABORATIVE PROJECT BETWEEN AGSO AND GNSM

DIGITAL DATA All map elements are stored digitally as topologically linked vector data...