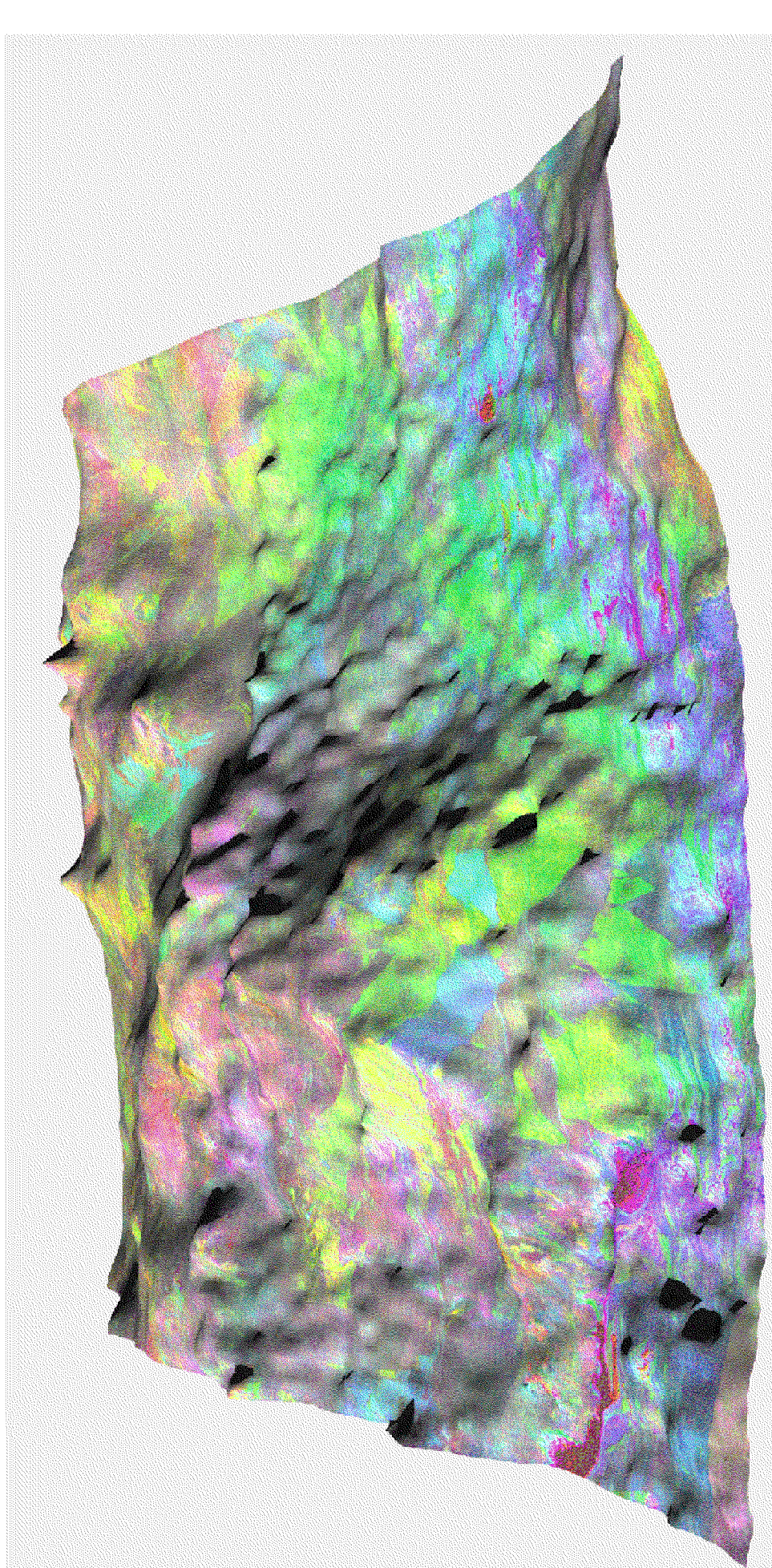


3-D LANDSCAPE PERSPECTIVE



Includes 3D elevation of the study area. The 3D elevation is derived from a Digital Elevation Model (DEM) derived from a 1:100,000 scale topographic map. The 3D elevation is color-coded by elevation, with red representing the highest elevations and blue representing the lowest elevations. The 3D perspective view shows the topographic relief of the study area.

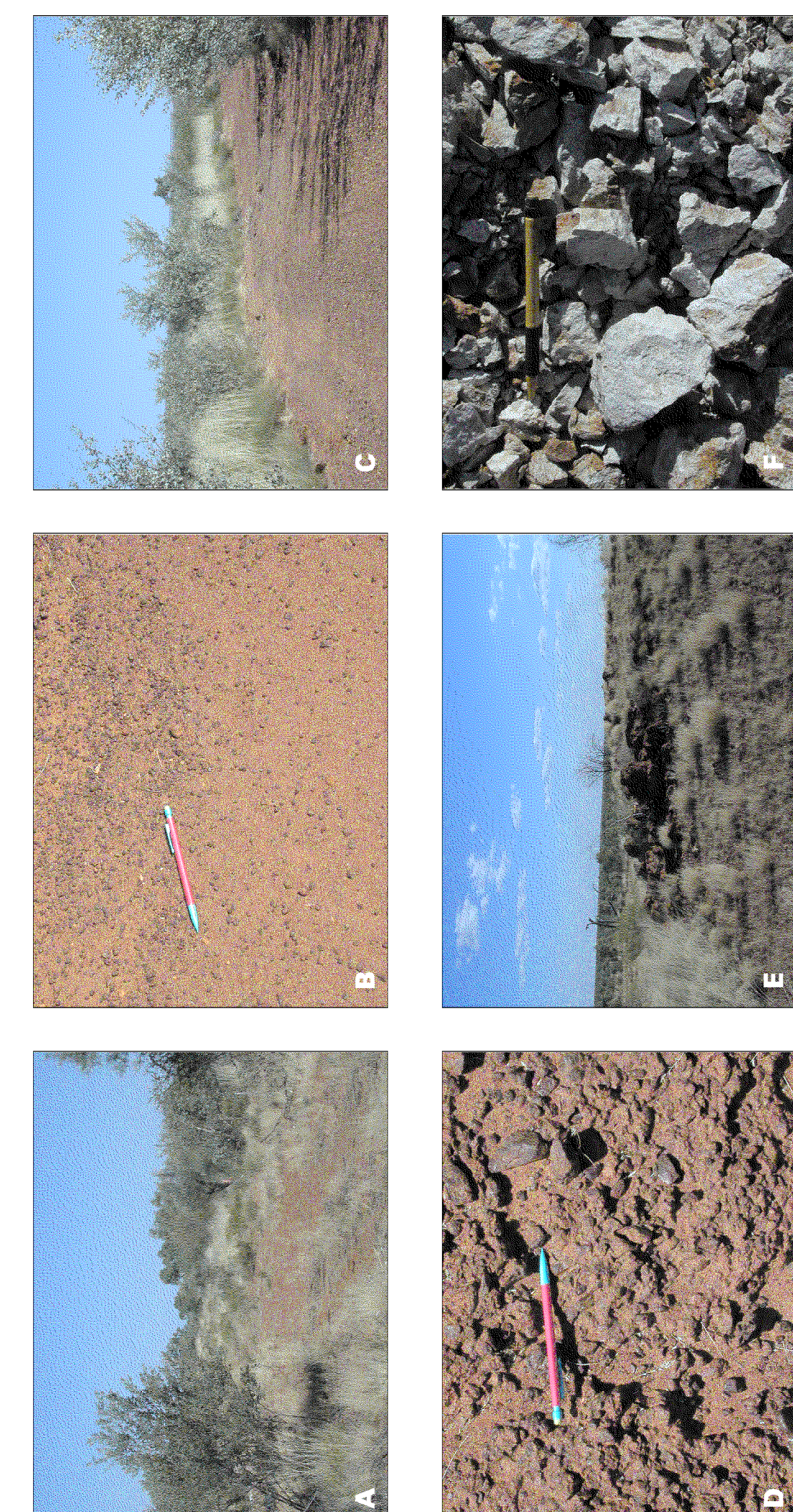
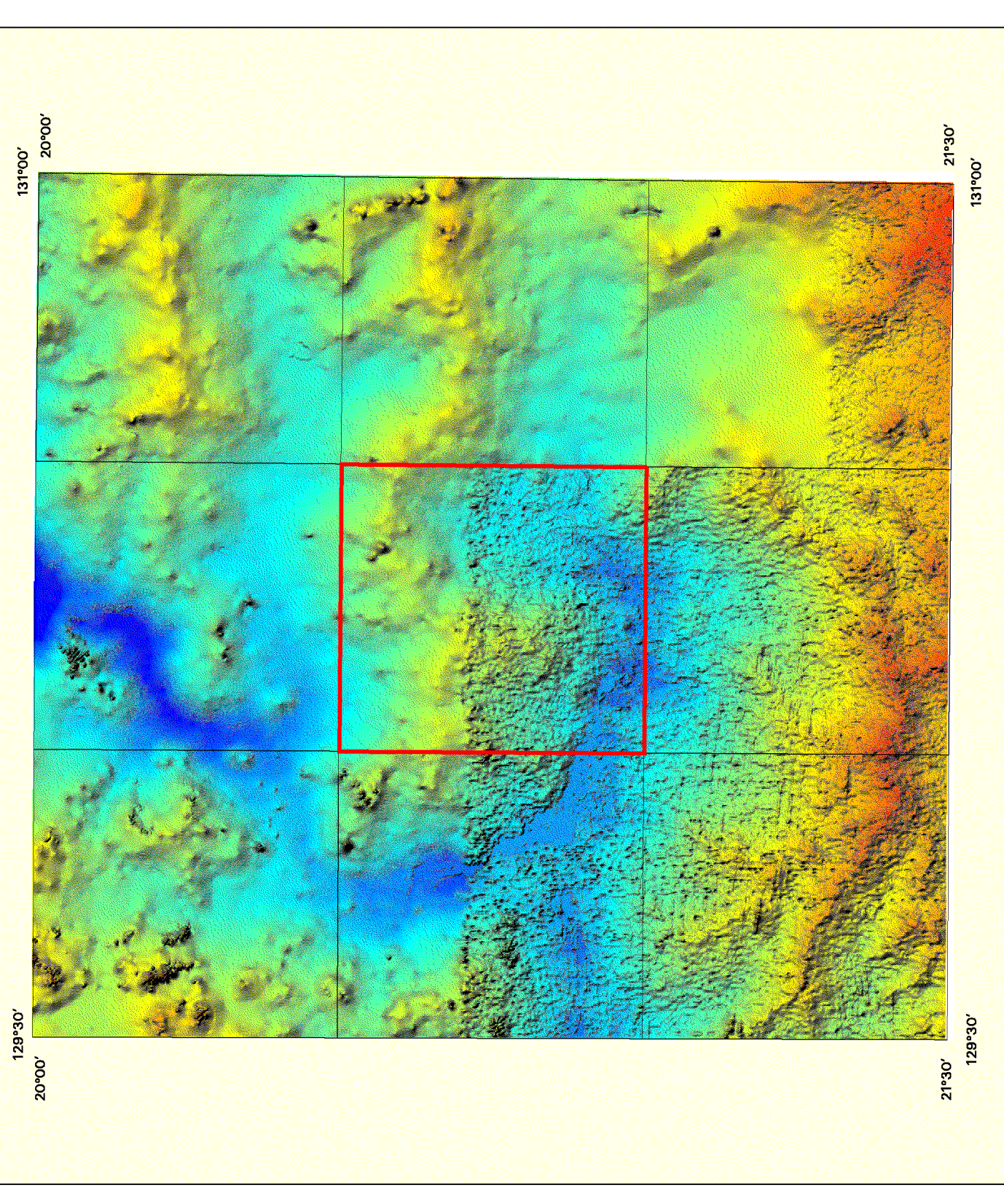


Fig. 4956. Field observations of geological features. A: Landscape view of the study area showing the location of the study area. B: Close-up view of a soil profile showing the texture and color of the soil. C: Close-up view of a soil profile showing the texture and color of the soil. D: Close-up view of a soil profile showing the texture and color of the soil.

UNIVERSAL TRANSVERSE MERCATOR PROJECTION
NAD 83 datum
WGS 84 datum
Scale 1:100,000

Restricted Circulation
This map is not to be disseminated outside the Australian continent. It is the property of the Australian Government and is loaned to you for your use only. It is not to be reproduced, stored in a retrieval system, or transmitted in any form or by any means, electronic, mechanical, photocopying, recording, or by any information storage and retrieval system, without the prior written permission of the Australian Government. For more information, contact the Australian Government, Canberra, Australia.



Area covered Digital Elevation Model (DEM) image with north-south (latitudinal) and east-west (longitudinal) coordinates. The DEM image is derived from a 1:100,000 scale topographic map. The DEM image is color-coded by elevation, with red representing the highest elevations and blue representing the lowest elevations.

Transported Regolith

Ap0
Ap1
Ap2
Ap3
Ap4
Ap5
Ap6
Ap7
Ap8
Ap9
Ap10
Ap11
Ap12
Ap13
Ap14
Ap15
Ap16
Ap17
Ap18
Ap19
Ap20
Ap21
Ap22
Ap23
Ap24
Ap25
Ap26
Ap27
Ap28
Ap29
Ap30
Ap31
Ap32
Ap33
Ap34
Ap35
Ap36
Ap37
Ap38
Ap39
Ap40
Ap41
Ap42
Ap43
Ap44
Ap45
Ap46
Ap47
Ap48
Ap49
Ap50
Ap51
Ap52
Ap53
Ap54
Ap55
Ap56
Ap57
Ap58
Ap59
Ap60
Ap61
Ap62
Ap63
Ap64
Ap65
Ap66
Ap67
Ap68
Ap69
Ap70
Ap71
Ap72
Ap73
Ap74
Ap75
Ap76
Ap77
Ap78
Ap79
Ap80
Ap81
Ap82
Ap83
Ap84
Ap85
Ap86
Ap87
Ap88
Ap89
Ap90
Ap91
Ap92
Ap93
Ap94
Ap95
Ap96
Ap97
Ap98
Ap99
Ap100

In situ Regolith

Ch01
Ch02
Ch03
Ch04
Ch05
Ch06
Ch07
Ch08
Ch09
Ch10
Ch11
Ch12
Ch13
Ch14
Ch15
Ch16
Ch17
Ch18
Ch19
Ch20
Ch21
Ch22
Ch23
Ch24
Ch25
Ch26
Ch27
Ch28
Ch29
Ch30
Ch31
Ch32
Ch33
Ch34
Ch35
Ch36
Ch37
Ch38
Ch39
Ch40
Ch41
Ch42
Ch43
Ch44
Ch45
Ch46
Ch47
Ch48
Ch49
Ch50
Ch51
Ch52
Ch53
Ch54
Ch55
Ch56
Ch57
Ch58
Ch59
Ch60
Ch61
Ch62
Ch63
Ch64
Ch65
Ch66
Ch67
Ch68
Ch69
Ch70
Ch71
Ch72
Ch73
Ch74
Ch75
Ch76
Ch77
Ch78
Ch79
Ch80
Ch81
Ch82
Ch83
Ch84
Ch85
Ch86
Ch87
Ch88
Ch89
Ch90
Ch91
Ch92
Ch93
Ch94
Ch95
Ch96
Ch97
Ch98
Ch99
Ch100

Granite

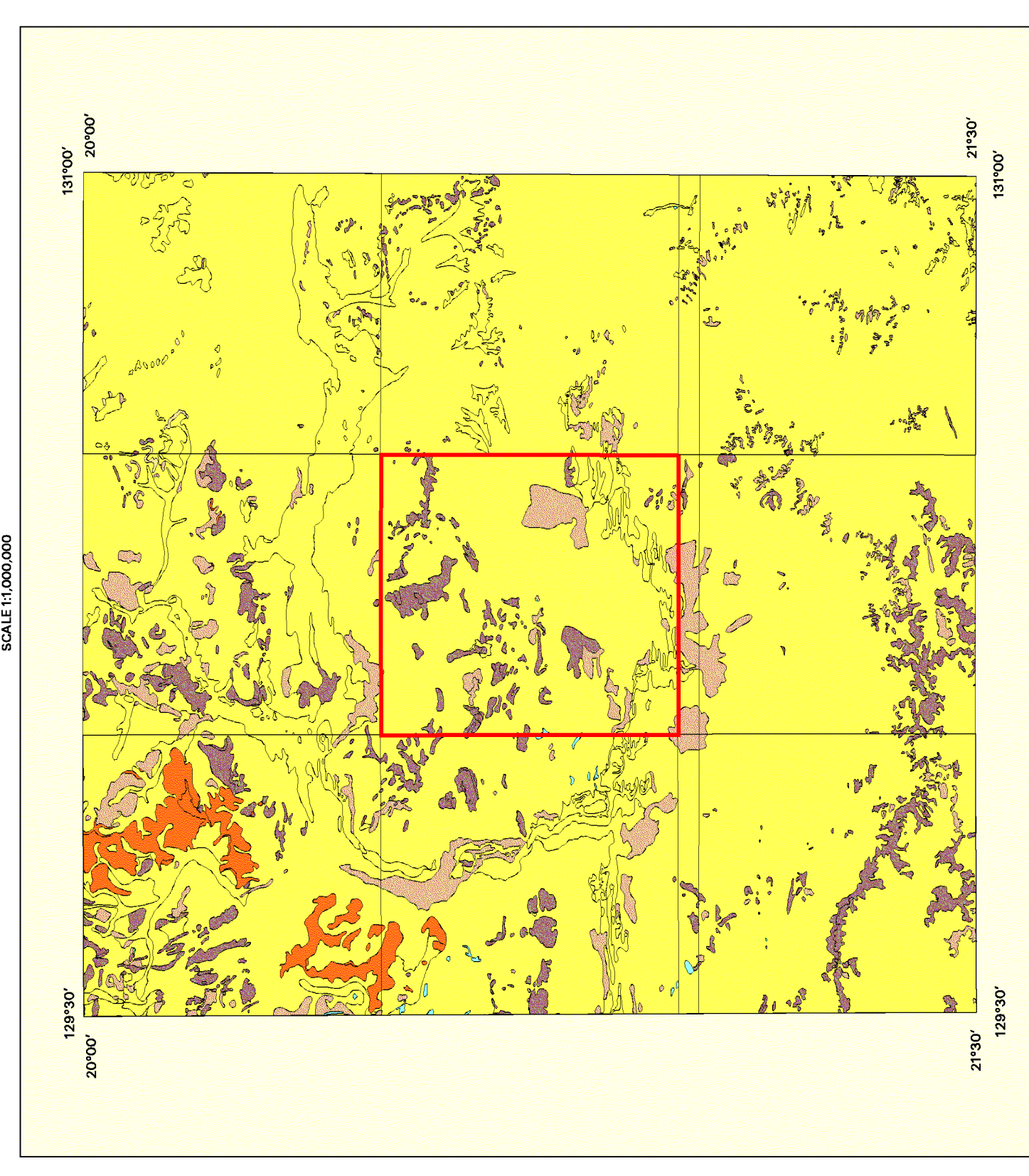
G01
G02
G03
G04
G05
G06
G07
G08
G09
G10
G11
G12
G13
G14
G15
G16
G17
G18
G19
G20
G21
G22
G23
G24
G25
G26
G27
G28
G29
G30
G31
G32
G33
G34
G35
G36
G37
G38
G39
G40
G41
G42
G43
G44
G45
G46
G47
G48
G49
G50
G51
G52
G53
G54
G55
G56
G57
G58
G59
G60
G61
G62
G63
G64
G65
G66
G67
G68
G69
G70
G71
G72
G73
G74
G75
G76
G77
G78
G79
G80
G81
G82
G83
G84
G85
G86
G87
G88
G89
G90
G91
G92
G93
G94
G95
G96
G97
G98
G99
G100

Landform Codes

L01
L02
L03
L04
L05
L06
L07
L08
L09
L10
L11
L12
L13
L14
L15
L16
L17
L18
L19
L20
L21
L22
L23
L24
L25
L26
L27
L28
L29
L30
L31
L32
L33
L34
L35
L36
L37
L38
L39
L40
L41
L42
L43
L44
L45
L46
L47
L48
L49
L50

Geological Features

F01
F02
F03
F04
F05
F06
F07
F08
F09
F10
F11
F12
F13
F14
F15
F16
F17
F18
F19
F20
F21
F22
F23
F24
F25
F26
F27
F28
F29
F30
F31
F32
F33
F34
F35
F36
F37
F38
F39
F40
F41
F42
F43
F44
F45
F46
F47
F48
F49
F50
F51
F52
F53
F54
F55
F56
F57
F58
F59
F60
F61
F62
F63
F64
F65
F66
F67
F68
F69
F70
F71
F72
F73
F74
F75
F76
F77
F78
F79
F80
F81
F82
F83
F84
F85
F86
F87
F88
F89
F90
F91
F92
F93
F94
F95
F96
F97
F98
F99
F100



Regional Geology Legend

REGOLITH	Transported regolith	Ap0 - Ap100
REGOLITH	In situ regolith	Ch01 - Ch100
REGOLITH	Granite	G01 - G100
REGOLITH	Landform codes	L01 - L50
REGOLITH	Geological features	F01 - F100

CRCLEME
Cooperative Research Centre for Landscape Evolution & Palaeo-Ecology

GRANITES
REGOLITH-LANDFORM MAP SERIES
FOR ACACIA RESOURCES, NORMANDY NFM
FILE NO. 4956
<http://irma.amsu.edu.au/>

CONFIDENTIAL