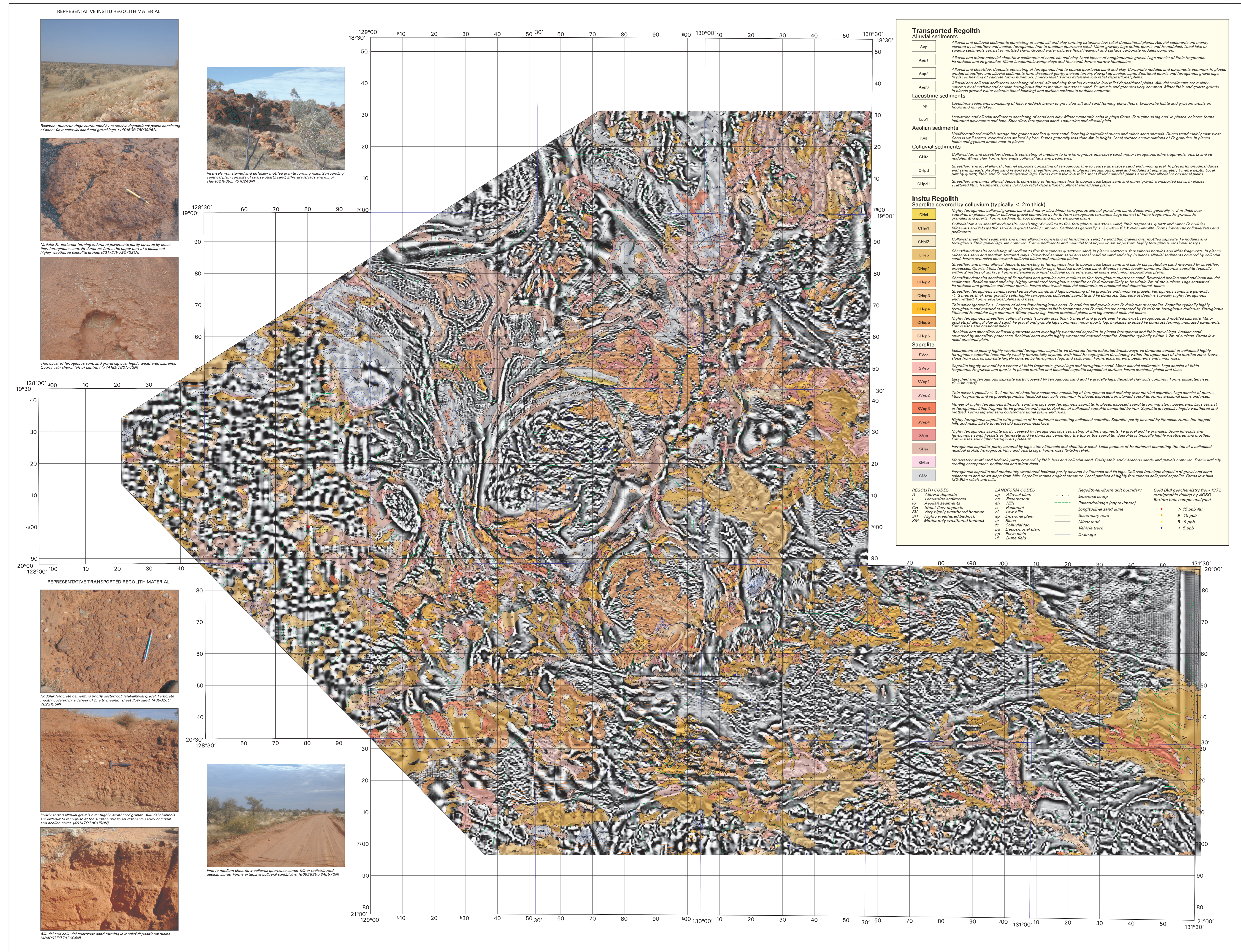


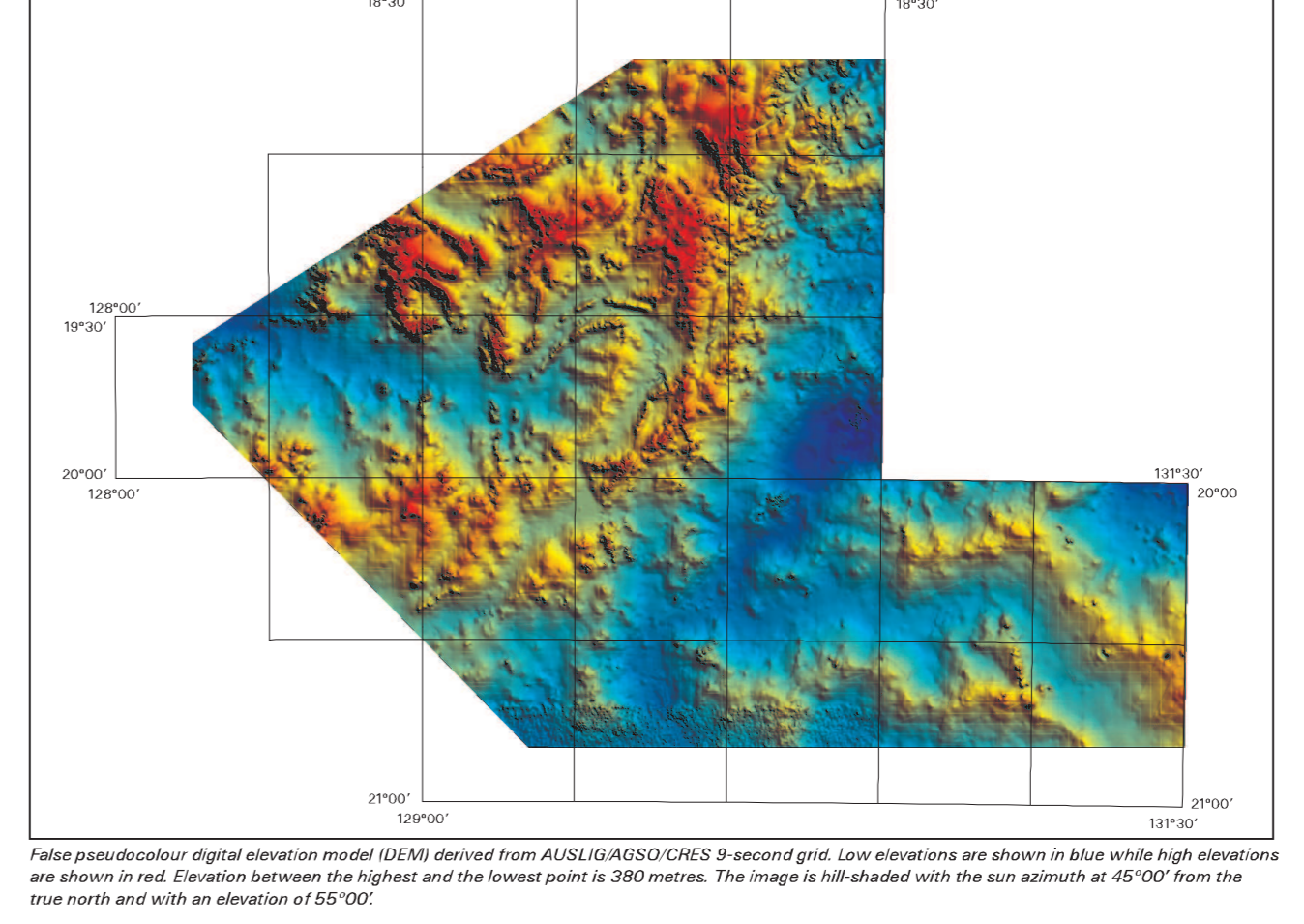
GRANITES TANAMI
REGOLITH-LANDFORM SERIES

REGOLITH-LANDFORMS COMBINED WITH A MAGNETIC GRADIENT IMAGE

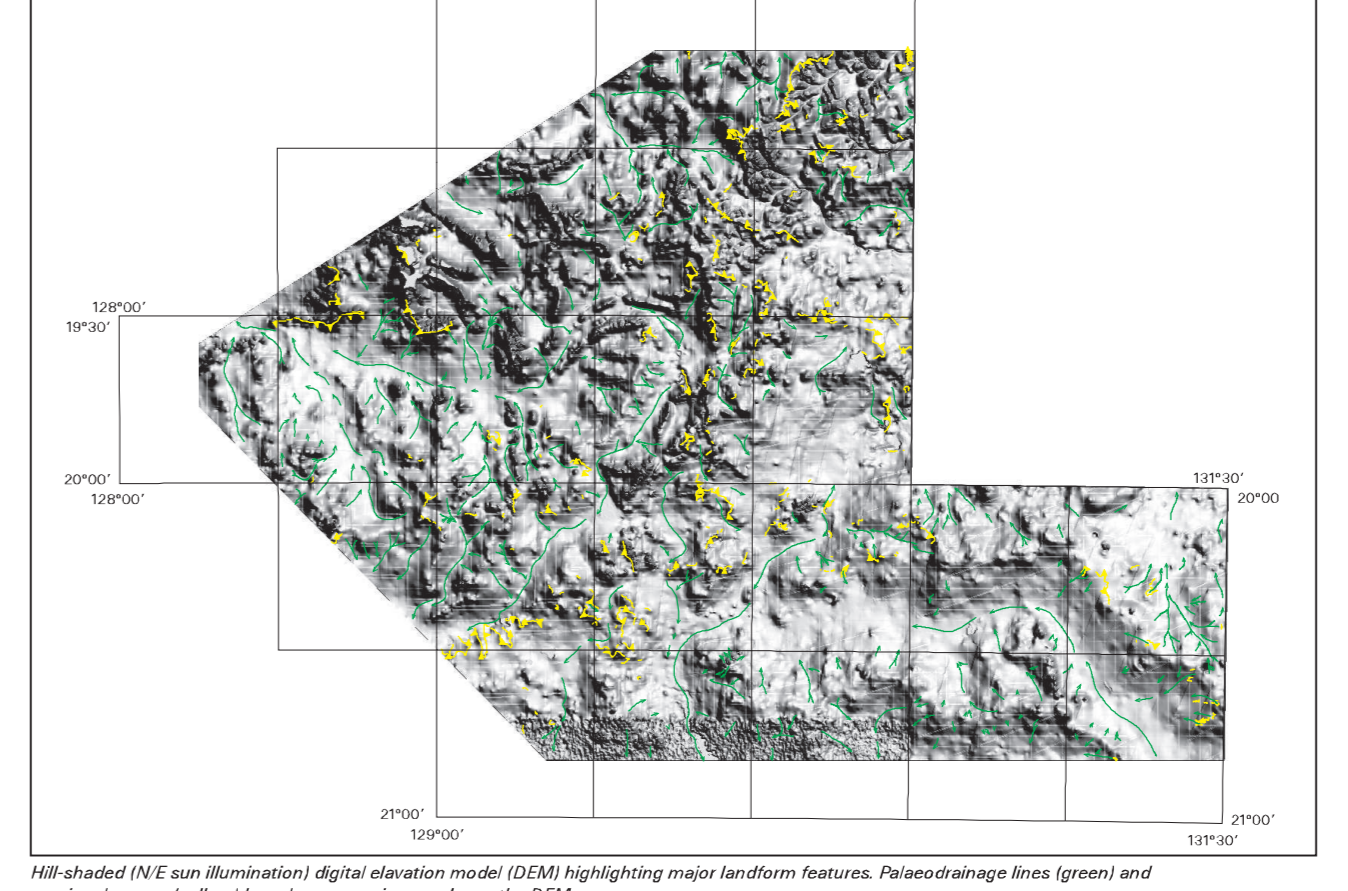
SPECIAL EDITION
SCALE 1:500,000



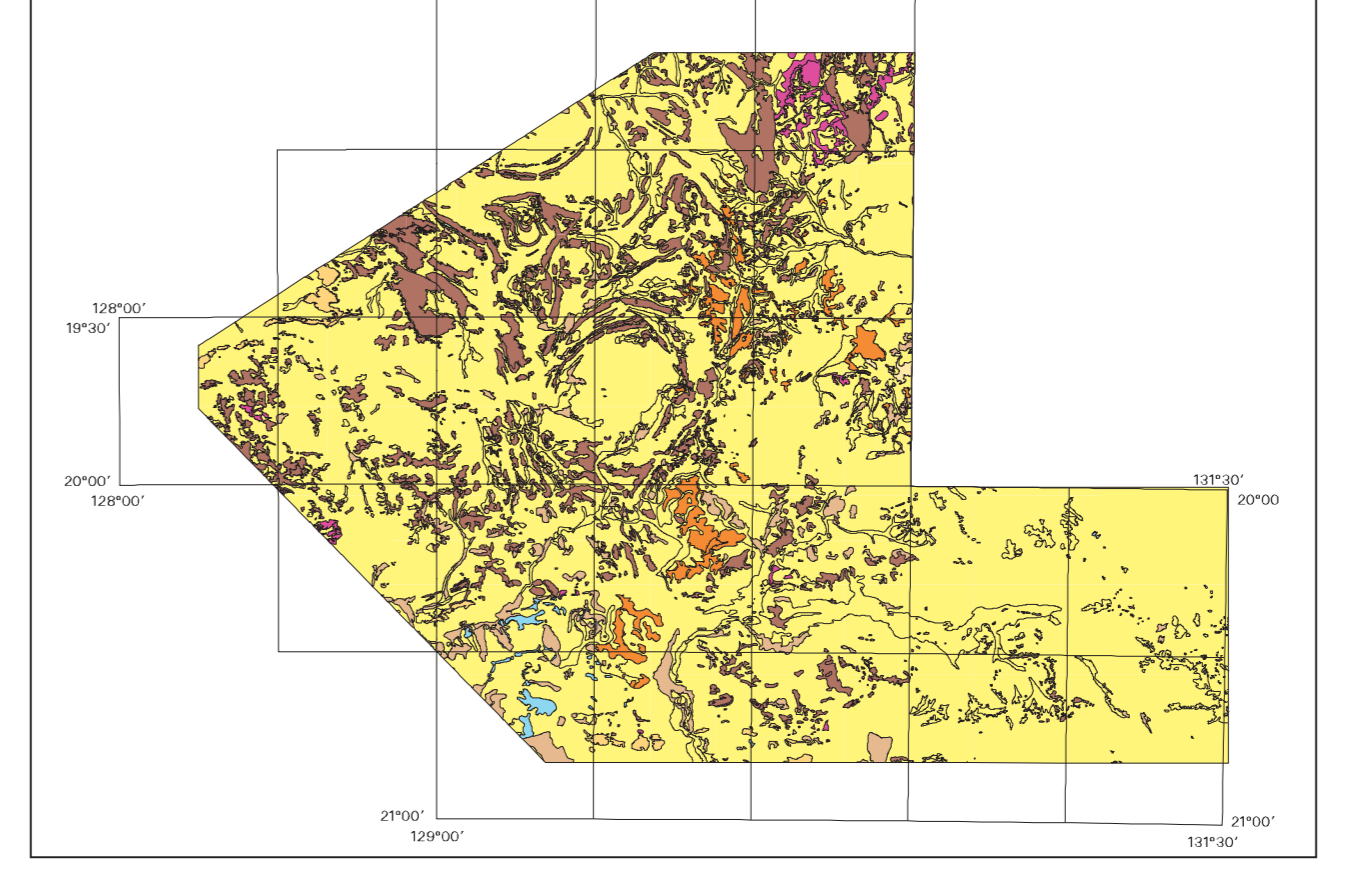
DIGITAL ELEVATION MODEL
SCALE 1:500,000



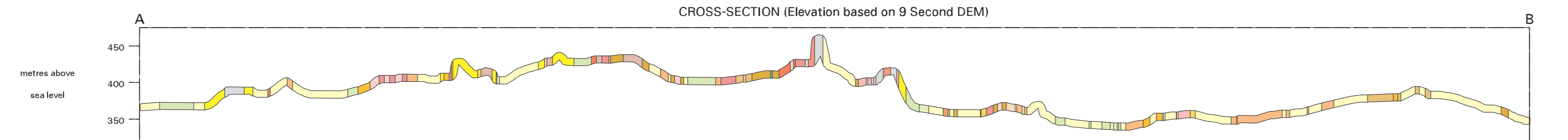
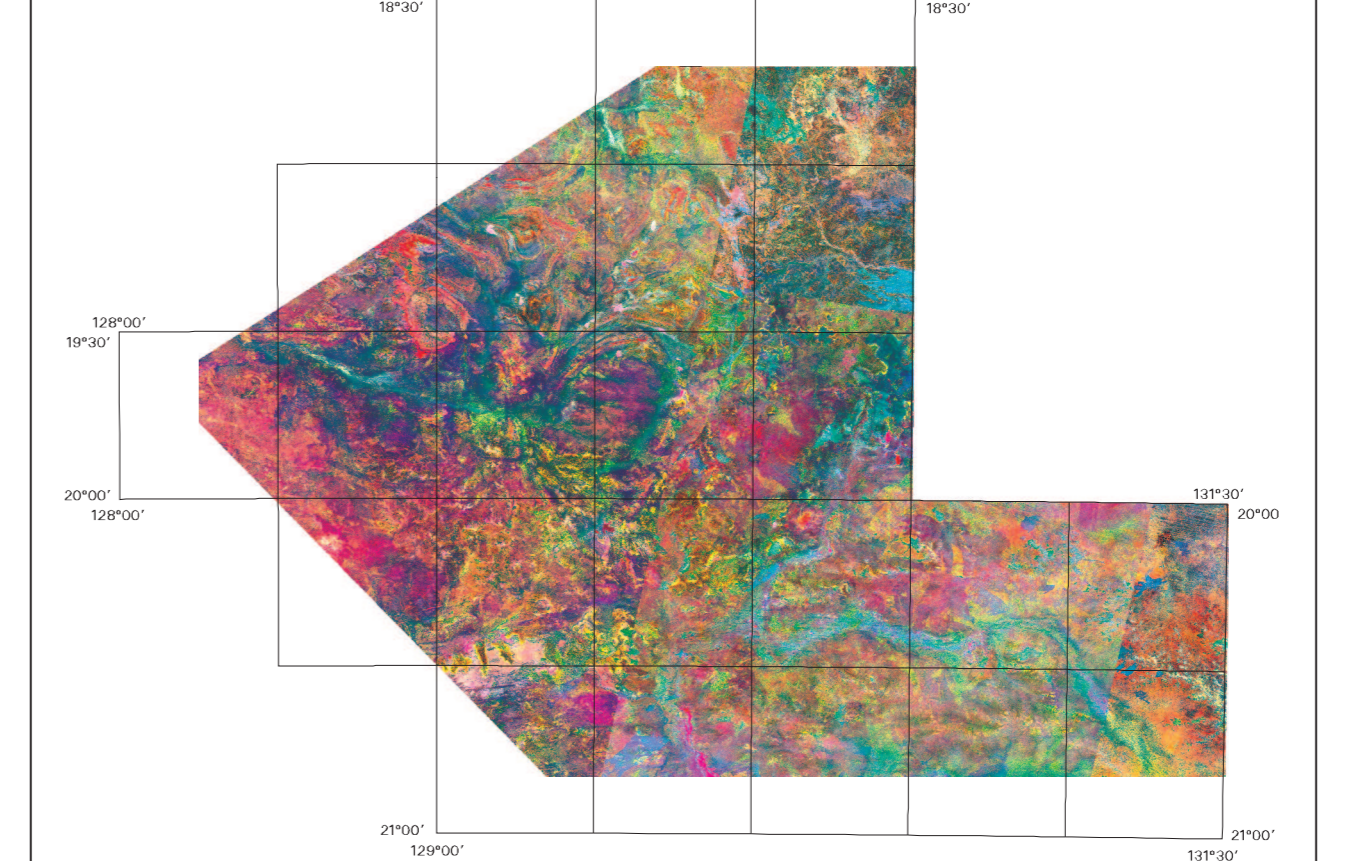
PALAEODRAINAGE
SCALE 1:500,000



REGIONAL GEOLOGY
SCALE 1:500,000



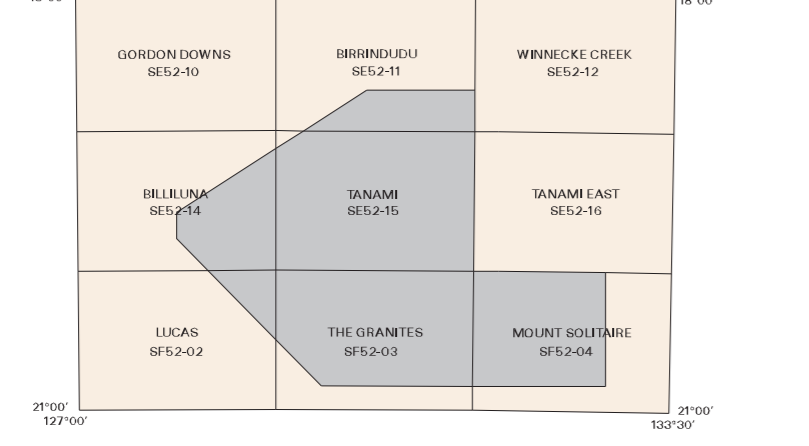
LANDSAT-5 TM
SCALE 1:500,000



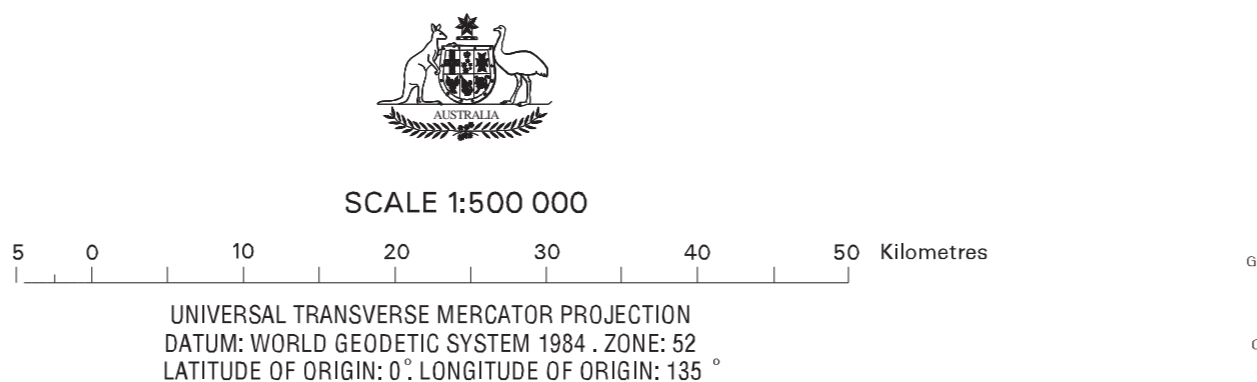
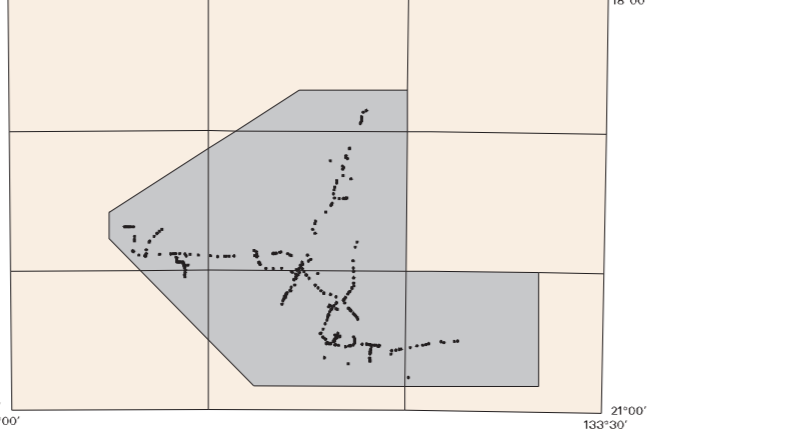
LOCALITY MAP



INDEX TO 1:250,000 MAPS



FIELD SITES DIAGRAM



Compiled by: IROBROCK CRC LEME/AGSO/1999
Cartography by: IROBROCK and IROBROCK CRC LEME/AGSO/1999
GIS by: IROBROCK and IROBROCK CRC LEME/AGSO/1999
Image Processing by: IROBROCK CRC LEME/AGSO/1999
It is recommended that this map be referred to as: IROBROCK, J.B. and Butcher, D. Tanami Granites Regolith-Landforms Special Edition: (1:500,000 map scale)
Published by: CRC LEME, Canberra, Australia
© CRC LEME 1999
This work is copyright. Apart from any fair dealings for the purpose of this work as copyright, no part may be reproduced by any process without written permission. Copyright is the responsibility of the CRC LEME.
Enquiries relating to this map should be directed to:
The Publication Office
CRC LEME
c/- CSIRO Division of Exploration and Mining
195 Pirrama Road
Pyrmont, NSW 1502, Australia
Tel: (02) 9533 9272 Fax: (02) 9533 8166
Digital Elevation Model (DEM) information shown on this map has been derived from the CSIRO Geospatial Information Centre (GISC) by permission of the Australian Land Information Group (ALIG/IS).

This map is not to be given additional distribution or be used in other documents without the consent of the Director of the Cooperative Research Centre for Landscape Evolution and Mineral Exploration (CRCLEME)
The Director
CRCLEME
c/- CSIRO Division of Exploration and Mining
195 Pirrama Road
Pyrmont, NSW 1502, Australia
Tel: (02) 9533 9272 Fax: (02) 9533 8166
CRCLEME has tried to make the information in this product as accurate as possible. However, we should not rely solely on this information without making a careful check.
CRCLEME is an unincorporated joint venture between the Australian Land Information Group (ALIG), CSIRO Division of Exploration and Mining, and other interested parties, operating under the Australian Government's Cooperative Research Centres' Programs.
Restricted Circulation

CRCLEME
Cooperative Research Centre for Landscape Evolution & Mineral Exploration
GRANITES TANAMI
REGOLITH-LANDFORM SPECIAL EDITION NFM
AND OTHER GOLD IN
PRELIMINARY EDITION OCTOBER 1999
http://teme.anu.edu.au/
Restricted Circulation
CONFIDENTIAL