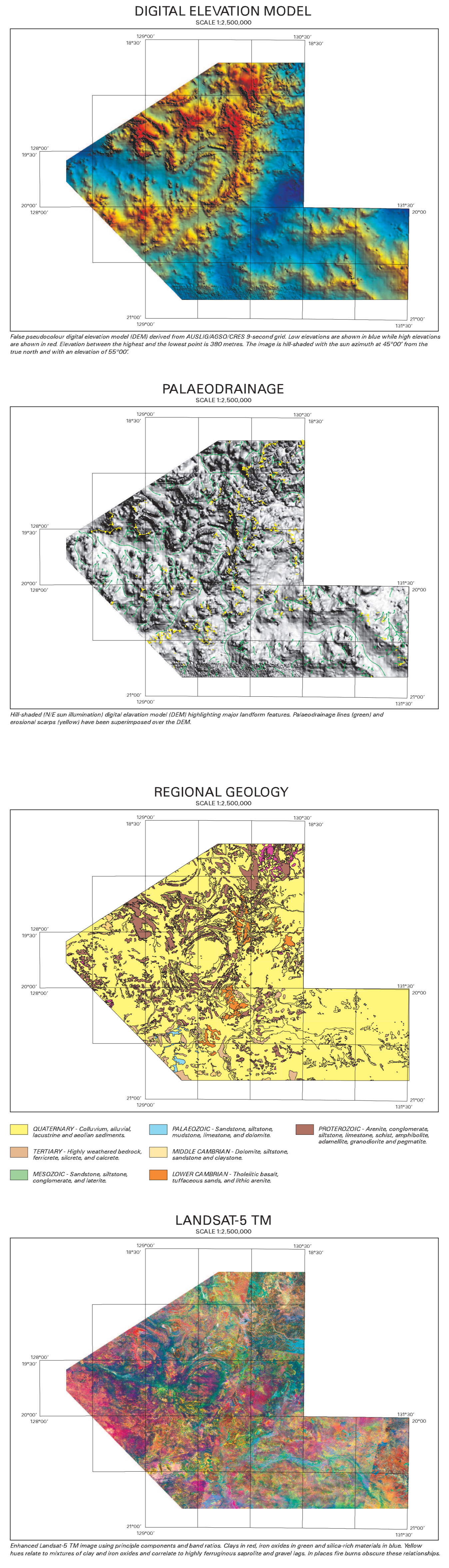
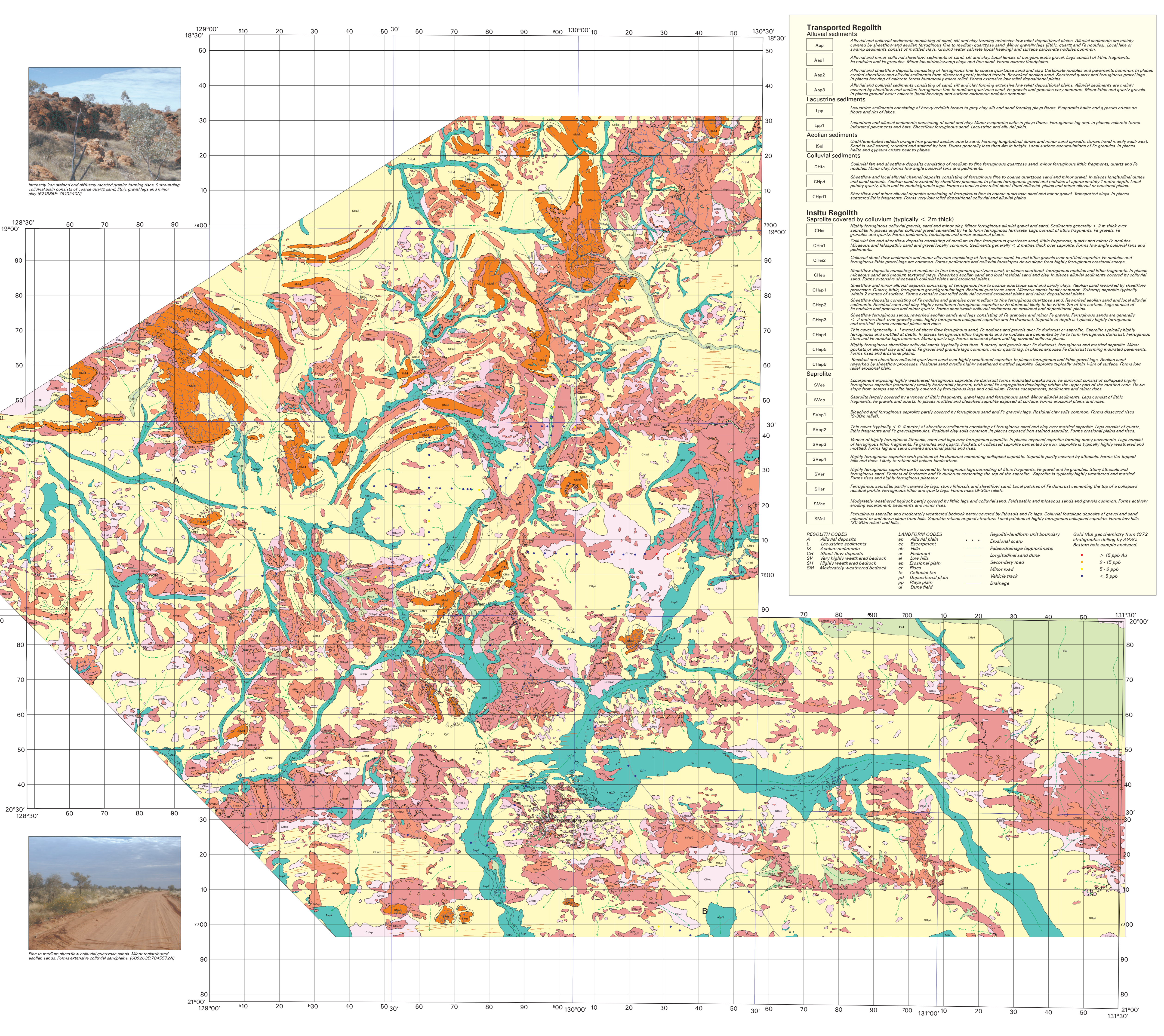
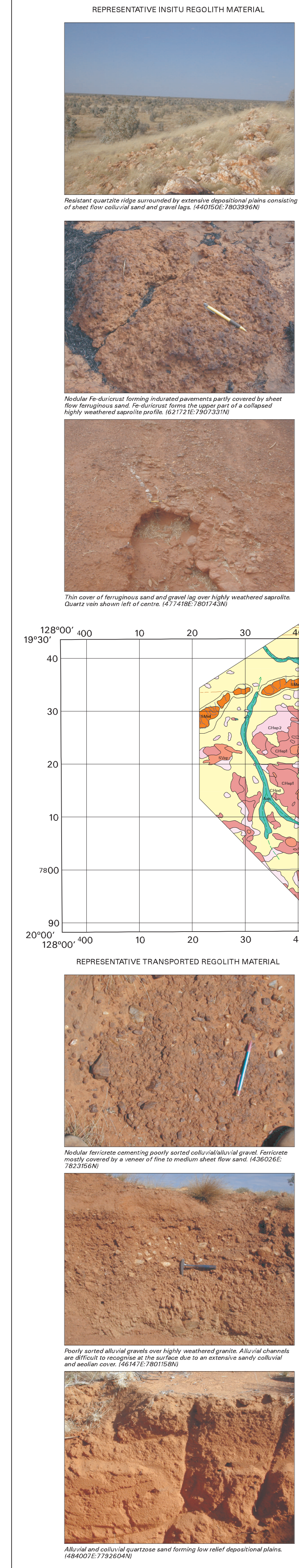


ESTIMATED THICKNESS OF RESIDUAL AND TRANSPORTED COVER OVER SAPROLITE

(Based on average thickness for each regolith unit - thickness likely to vary at local scales)

SPECIAL EDITION
SCALE 1:500,000

GRANITES TANAMI
REGOLITH-LANDFORM SERIES



LOCALITY MAP

INDEX TO 1:250,000 MAPS

FIELD SITES DIAGRAM

SCALE 1:500,000

UNIVERSAL TRANSVERSE MERCATOR PROJECTION
DATUM: WORLD GEODETIC SYSTEM 1984, ZONE: 52
LATITUDE OF ORIGIN: 0°, LONGITUDE OF ORIGIN: 135°

Compiled by: I.R. (1988) CRC LEME/AGSO/1999
Cartography by: I.R. (1988) and T. Brown (1999) CRC LEME/AGSO/1999
GIS by: C. Brown (1999) and T. Brown (1999) CRC LEME/AGSO/1999
Image Processing by: I.R. (1988) CRC LEME/AGSO/1999
It is recommended that this map be checked by Mr. W. J. L. and Mr. B. W. D. (1999) CRC LEME/AGSO/1999
Published by: CRC LEME, Canberra, Australia

CRCLME
Cooperative Research Centre for
Landscape Evolution & Mineral Exploration

**GRANITES TANAMI
REGOLITH-LANDFORM SPECIAL EDITION MAP
FOR ACACIA RESOURCES, NORMANDY NFM
AND OTHER GOLD NFM
PRELIMINARY EDITION DECEMBER 1999
http://teme.anu.edu.au/**

Restricted Circulation

CONFIDENTIAL