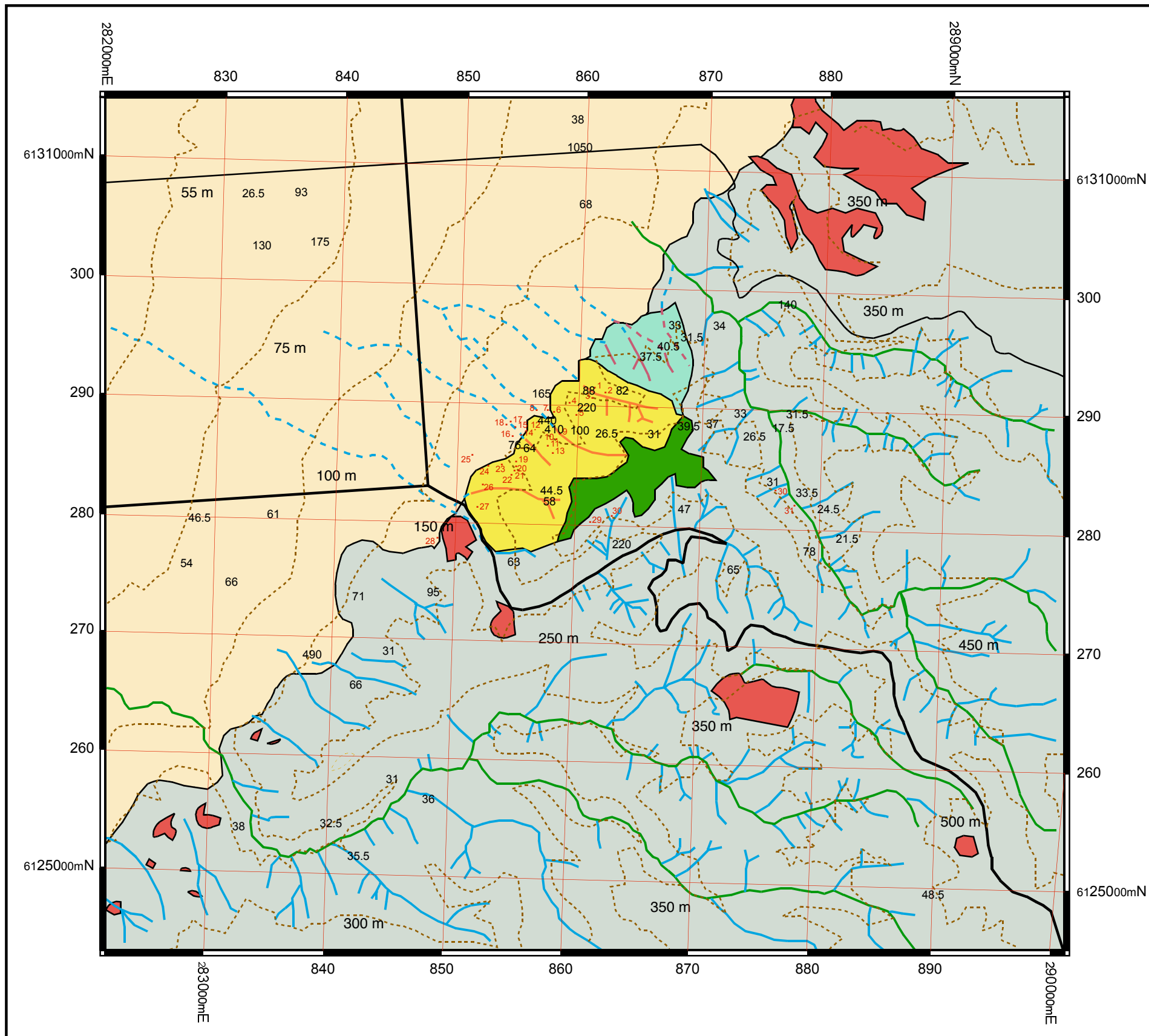


Figure 8.

Regolith Landform Map - Glen Osmond, Adelaide Hills

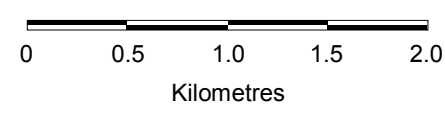
Reference

(Regolith unit descriptions, Appendix-A)



- Regolith unit 1 - steep slopes, moderate colluvium
- Regolith unit 2 - alluvial plain sediments
- Regolith unit 3 - steep slope, thin colluvium
- Regolith unit 4 - undulating rounded hills
- Regolith unit 5 - high capacity, 3rd order channel
- Regolith unit 6 - diurnal, steeply inclined channel
- Regolith unit 7 - diurnal, slightly inclined channel
- Regolith unit 8 - moderately inclined channel
- Golf course
- Quarry
- Road
- Contour line
- Inferred creek
- .20 Location of historic Pb - Ag mine
- .15 Lead concentration in ppm

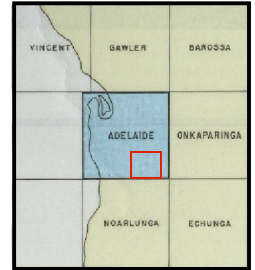
(© Andrew K.M. Baker, 1999)



M.N.



Index to adjoining sheets



Location Map

