

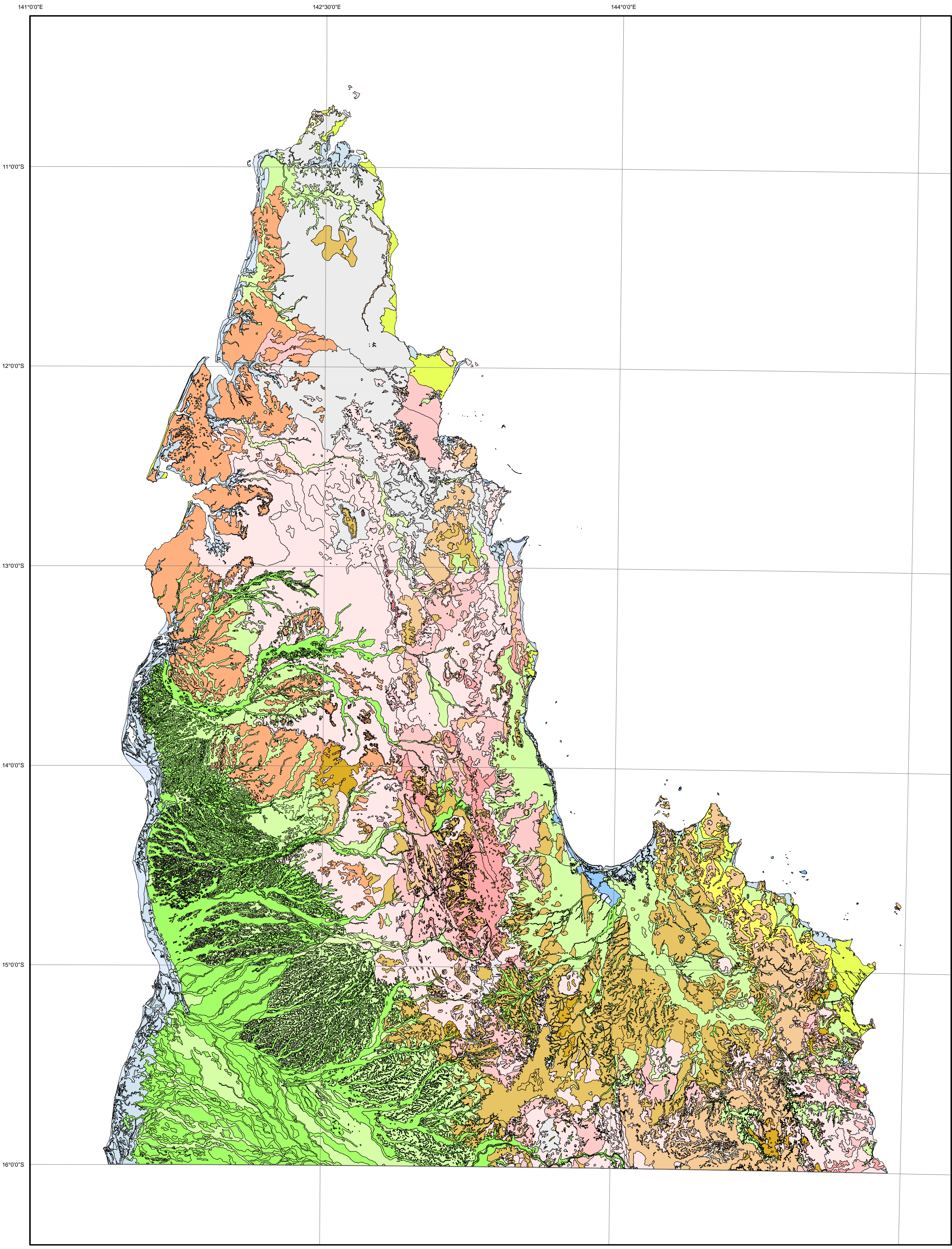
Cape York Regolith

SCALE 1:1,500,000



Australian Government  
Geoscience Australia

National Geoscience Mapping Accord



Universal Transverse Mercator projection, Map Grid of Australia  
1994 UTM Zone 54, Geocentric Datum of Australia 1994



Legend

- Alluvial Sediments
- Channel Deposits
- Overbank Deposits
- Aeolian Sediments
- Aeolian Sand
- Colluvial Sediments
- Sheet Flow Deposit
- Fanglomerate
- Scree
- Lacustrine Sediments
- Tephra
- Coastal Sediments
- Beach Sediments
- Estuarine Sediments
- Coral
- Residual Sand
- Residual Clay
- Bauxite
- Soil On Bedrock
- Saprolite
- Completely Weathered Bedrock
- Very Highly Weathered Bedrock
- Highly Weathered Bedrock
- Moderately Weathered Bedrock
- Saprock

Regolith of the Cape York Peninsula,  
North Queensland (CYPLUS project)

Compiled by:

C.F. Pain and J.R. Wilford, Division of Regional Geology  
and Minerals, AGSO,

and

J.C. Dohrenwend, United States Geological Survey,  
Menlo Park, California

© 2004

Disclaimer: This digital map is "historical" data, which means it was  
compiled as an ARC/INFO coverage before full quality control  
procedures were in place at Geoscience Australia. Geoscience  
Australia makes no guarantees about its suitability to run on any  
computer, or its suitability for being used with other digital data  
layers in the same area.

This map was compiled at 1:250,000. Each polygon has regolith and  
landform types as minimum attributes. The CD contains the Arc/INFO  
files, a copy of the CYPLUS report, and a copy of the GA regolith  
mapping handbook.

Copies of the digital data and accompanying notes are available from:

Geoscience Australia Sale Centre  
GPO Box 378  
Canberra ACT 2601

<http://www.ga.gov.au/sales/>, Geocat # 39573