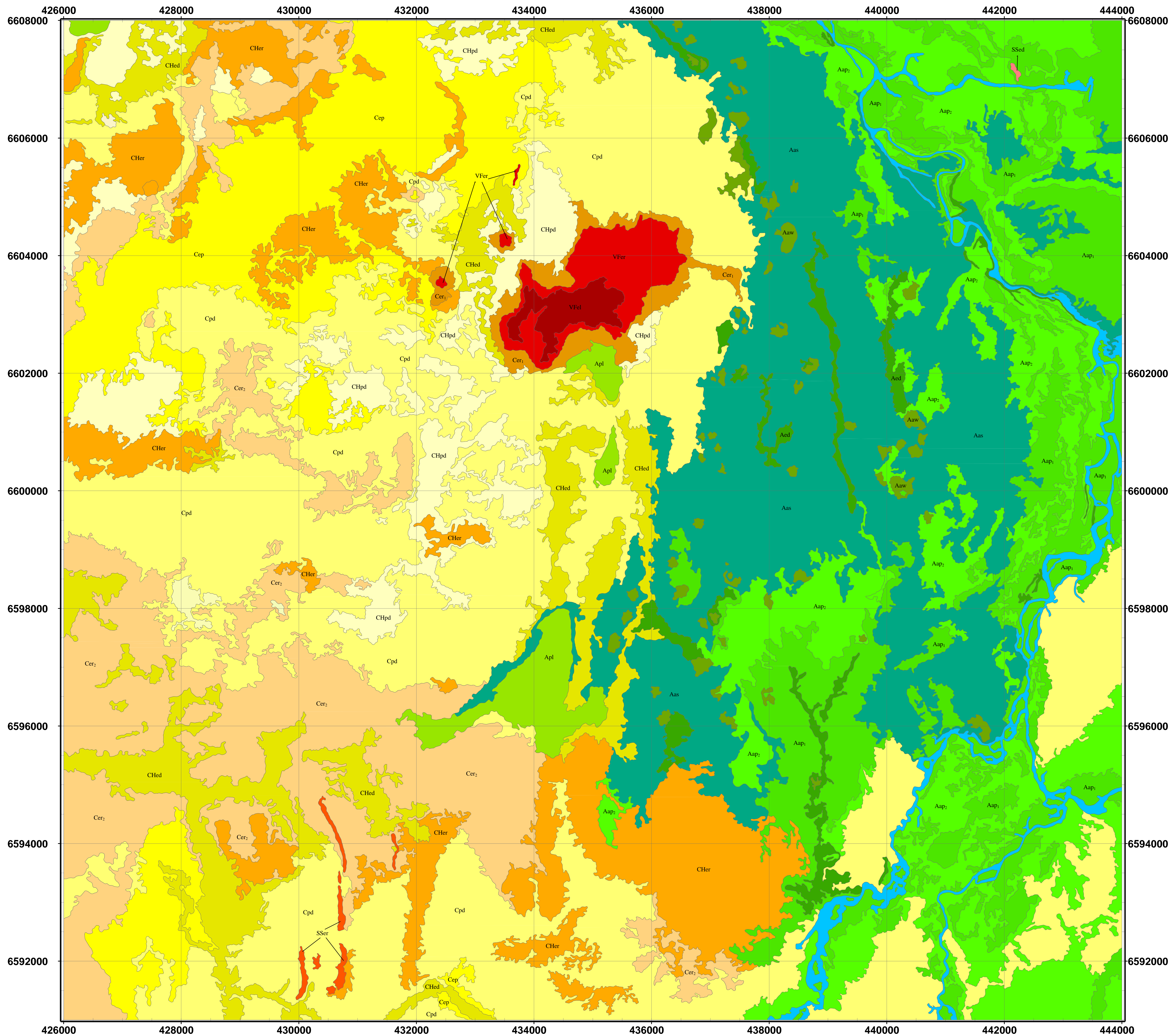


# Byrock 1:25000 Regolith-Landform Map



## Legend

### *In situ* Regolith Landforms

- VFe**  
Moderately weathered cobbles and boulders of leucite basalt. Interstitial material consists of red-brown fine sands and silts. Sparsely vegetated with scattered occurrences of Beefwood (*Grevillea striata*), Kurrajong (*Brachychiton populneus*), Wilga (*Geijera parviflora*) and Paddy Melons (*Cucumis myriocarpus*) in a savannah.
- VFe**  
Moderately weathered cobbles and boulders of leucite basalt. Interstitial material consists of red-brown fine sands and silts. Scattered occurrences of Beefwood (*Grevillea striata*), Kurrajong (*Brachychiton populneus*), Wilga (*Geijera parviflora*) and Paddy Melons (*Cucumis myriocarpus*) as well as forbs and grasses in a savannah.
- SSe**  
Slightly weathered cobbles and boulders of Quartzite. Interstitial material consists of red-brown fine sands and silts. Scattered occurrences of Mulga (*Acacia aneura*), Bimble Box (*Eucalyptus populnea*), Wilga (*Geijera parviflora*), Silver Cassia (*Cassia artemisioides*), Emu Bush (*Eremophila longifolia*), and various forbs and grasses.
- SSed**  
Slightly weathered granite forming a pavement, with weathered core-stones and boulders. Fine material consists of red-brown fine sands and silts. Scattered occurrences of Mulga (*Acacia aneura*), Bimble Box (*Eucalyptus populnea*), Wilga (*Geijera parviflora*), Silver Cassia (*Cassia artemisioides*), Emu Bush (*Eremophila longifolia*), and various forbs and grasses including Galvanised Burr (*Bassia burchii*).

### Colluvial Regolith Landforms

- Cpd**  
Regolith material dominated by red-brown fine sands and silts. Lithic material is common and consists of quartz, lag (magnetite) and scattered cobbles and boulder of leucite and quartzite, in correlation with proximity to outcropping *in situ* regolith landforms. Both Mulga (*Acacia aneura*) and Bimble Box (*Eucalyptus populnea*) woodlands occur within this unit.
- Cer<sub>1</sub>**  
Regolith material dominated by red-brown fine sands and silts. Cobbles and boulders of leucite are common. Sparsely vegetated with scattered occurrences of Beefwood (*Grevillea striata*), Kurrajong (*Brachychiton populneus*), Wilga (*Geijera parviflora*), Silver Cassia (*Cassia artemisioides*) and Paddy Melons (*Cucumis myriocarpus*) as well as forbs and grasses in an open woodland.
- Cer<sub>2</sub>**  
Regolith material dominated by red-brown fine sands and silts. Lithic material is common and consists of quartz, lag (magnetite) and quartzite, in correlation with proximity to outcropping *in situ* regolith landforms. The dominant vegetation community is Mulga (*Acacia aneura*) woodland.
- Cep**  
Regolith material dominated by red-brown fine sands and silts. Lithic material consists of quartz and lag (magnetite). The dominant vegetation is Bimble Box (*Eucalyptus populnea*) woodland.
- CHed**  
Regolith materials dominated by red-brown sands and silts (more sand than in other colluvial units). Lithic material consists of quartz and lag (magnetite). In a small number of areas lithic material is derived from weathered bedrock sub-crops in this unit (e.g. Girilambone Group, 0.5-70 mm). Sheet wash debris, stick dams and bands of magnetite and quartz are common. The dominant vegetation community is Bimble Box (*Eucalyptus populnea*) woodland.
- CHpd**  
Regolith material dominated by red-brown fine sands and silts. Lithic material consists of quartz and lag (magnetite). Sheet wash debris, stick dams and bands of magnetite and quartz are common. There are both Mulga (*Acacia aneura*) and Bimble Box (*Eucalyptus populnea*) woodlands occurring in this unit.
- CHer**  
Regolith material dominated by red-brown fine sands and silts. Lithic material consists of quartz and lag (magnetite). Sheet wash debris, stick dams and bands of magnetite and quartz are common. The dominant vegetation community is Mulga (*Acacia aneura*) woodland.

### Alluvial Regolith Landforms

- Aap<sub>1</sub>**  
Regolith material dominated by red-brown fine sands and silts with small amounts of lithic material (quartz and magnetite, 0.5-10mm). Vegetation dominated by Bimble Box (*Eucalyptus populnea*) woodland with small, restricted occurrences of Mulga (*Acacia aneura*) woodland.
- Aap<sub>2</sub>**  
Regolith material dominated by red-brown fine sands and silts with small amounts of lithic material (quartz and magnetite, 0.5-10mm). Laminar and rhizomorphic calcrete. Vegetation dominated by Bimble Box (*Eucalyptus populnea*) woodland with small, restricted occurrences of Mulga (*Acacia aneura*) woodland.
- Aas**  
Regolith material dominated by red-brown fine sands and silts with minor occurrences of quartz and magnetite. Vegetation communities consist of both Bimble Box (*Eucalyptus populnea*) and Mulga (*Acacia aneura*) woodland.
- ACa**  
Regolith materials and dominantly red-brown coarse sands and silts in the central part of this unit with finer sands and silts dominating the edges of this unit. Vegetation within this unit is dominated by grasses. Vegetation bordering the edges of these channels includes: Warrior Bush (*Apophyllum anomalum*) and lignum (*Muehlenbeckia cunninghamii*), which occur in small numbers. Other species associated with these areas include Bimble Box (*Eucalyptus populnea*), Wilga (*Geijera parviflora*), Emu Bush (*Eremophila longifolia*), Silver Cassia (*Cassia artemisioides*) and Turpentine (*Eremophila sturtii*), as well as forbs and grasses.
- Aaw**  
Regolith materials dominantly clay rich red-brown fine sands, silts and clays. Vegetation is dominated by grasses. Vegetation bordering the edges of these swamps includes: Warrior Bush (*Apophyllum anomalum*) and lignum (*Muehlenbeckia cunninghamii*), which occur in small numbers. Other species associated with these areas include Bimble Box (*Eucalyptus populnea*), Wilga (*Geijera parviflora*), Emu Bush (*Eremophila longifolia*), Silver Cassia (*Cassia artemisioides*) and Turpentine (*Eremophila sturtii*), as well as forbs and grasses.
- Apl**  
Regolith materials dominantly clay rich red-brown fine sands and silts. Vegetation is dominated by grasses. Vegetation bordering these lakes, as well as occurring sporadically within them includes: Warrior Bush (*Apophyllum anomalum*) and lignum (*Muehlenbeckia cunninghamii*), which occur in small numbers. Other species associated with these areas include Bimble Box (*Eucalyptus populnea*), Wilga (*Geijera parviflora*), Emu Bush (*Eremophila longifolia*), Silver Cassia (*Cassia artemisioides*) and Turpentine (*Eremophila sturtii*), as well as forbs and grasses.
- Aed**  
Regolith materials dominated by red-brown fine sands and silts with lithic material (quartz, magnetite, 0.5-30mm) in some areas. Vegetation is dominated by Bimble Box (*Eucalyptus populnea*) woodland and includes Budda (*Eremophila michellii*), Wilga (*Geijera parviflora*), Emu Bush (*Eremophila longifolia*), Silver Cassia (*Cassia artemisioides*), and Turpentine (*Eremophila sturtii*), as well as forbs and grasses.

© Hugh Glanville, CRC LEME, ANU, 2003.

GDA 94  
2km Map Grid using MGA 94 based on the GDA 94.

Acknowledgements:  
Supervisors: Ian C. Roach, Kenneth G. McQueen.  
NSW DMR: Michael Hicks, Peter Buckley.

