

Transported Regolith

Alluvial sediments

Acolian sediments

Cultural sediments

Lacustrine sediments

In situ Regolith

Saprolite covered by colluvium (typically < 2m thick)

REGOLITH CODES

LANDFORM CODES

GENERAL OCCURRENCES

RESTRICTED CIRCULATION

Copyright © 1999 CRC LEME, Canberra, Australia.

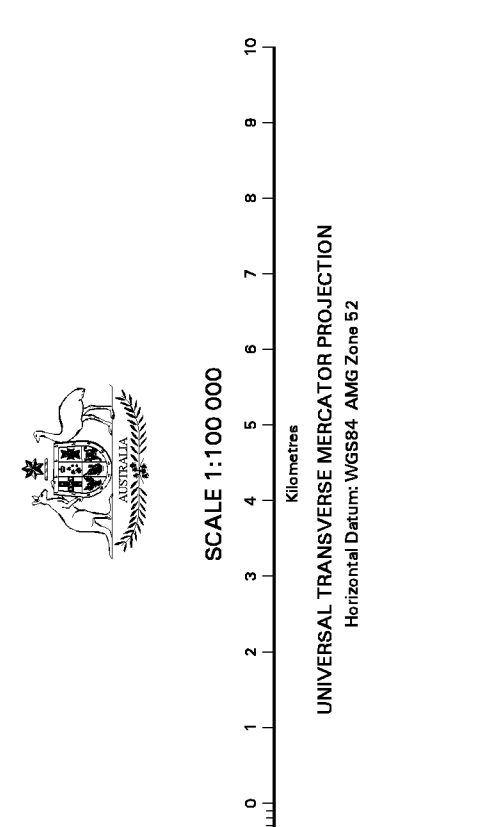
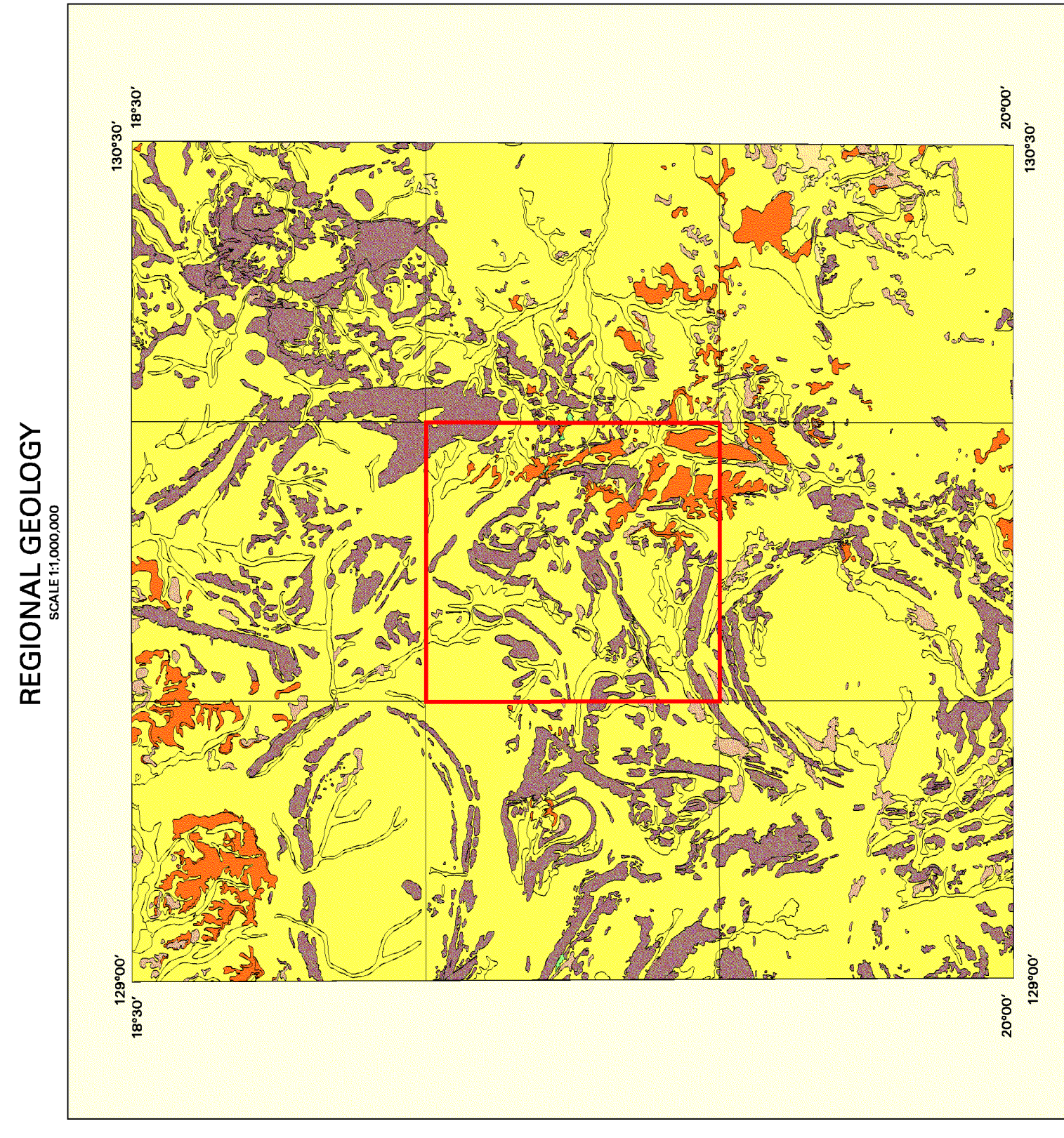
This map is not to be disseminated without the consent of the publisher. All rights reserved. This map is the property of CRC LEME and is loaned to you for your use only. No part of this map may be reproduced without the written permission of CRC LEME.

Published by CRC LEME, Canberra, Australia.

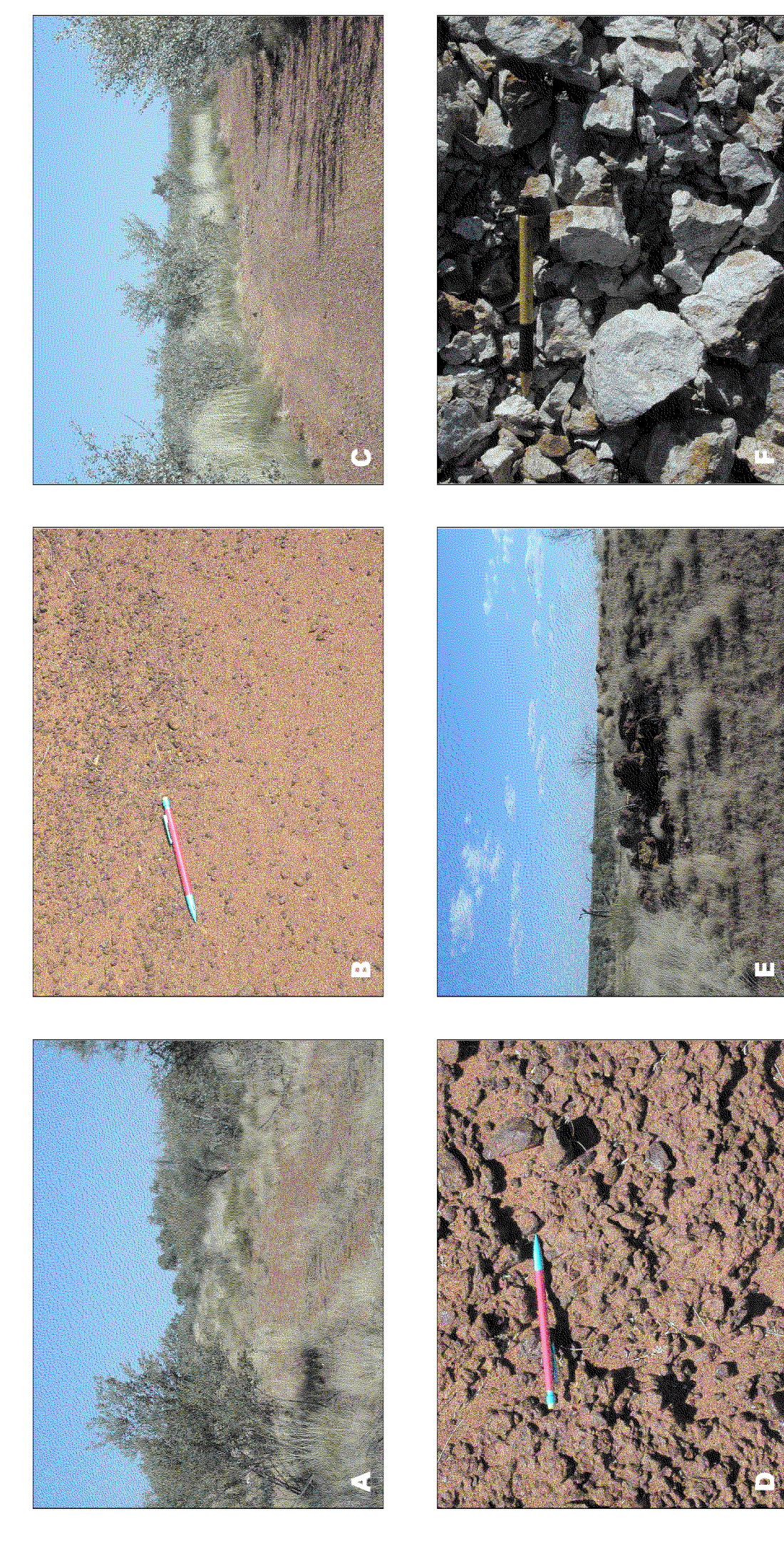
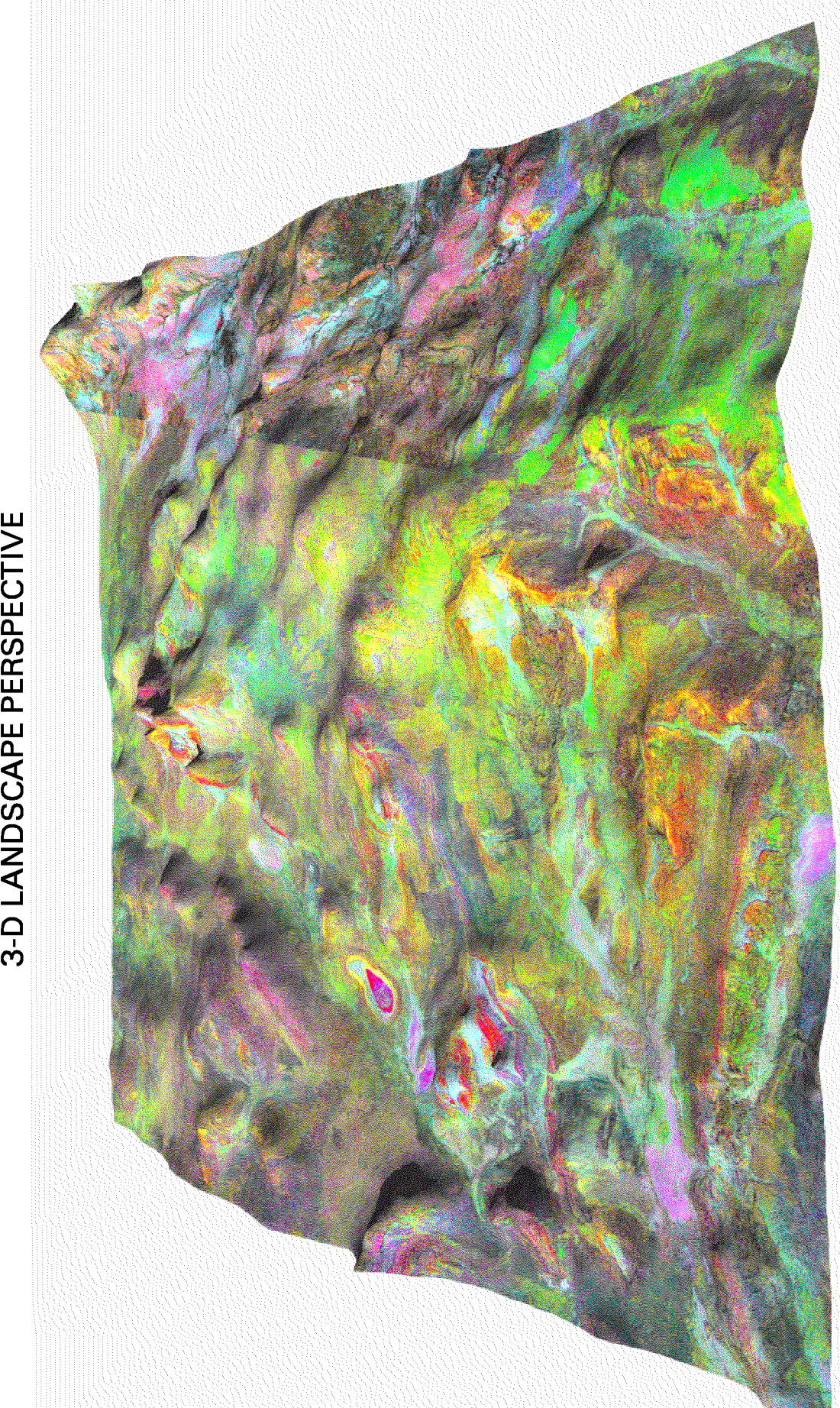
© CRC LEME 1999. All rights reserved. This map is the property of CRC LEME and is loaned to you for your use only. No part of this map may be reproduced without the written permission of CRC LEME.

The publication of this map is the property of CRC LEME. It is published under the authority of the Government of Western Australia. All rights reserved. This map is the property of CRC LEME and is loaned to you for your use only. No part of this map may be reproduced without the written permission of CRC LEME.

This map is not to be disseminated without the consent of the publisher. All rights reserved. This map is the property of CRC LEME and is loaned to you for your use only. No part of this map may be reproduced without the written permission of CRC LEME.



3-D LANDSCAPE PERSPECTIVE



Photographs A, B, C, D show different regolith and landform features in the field. A shows a landscape with sparse vegetation, B shows a close-up of a regolith surface, C shows a landscape with a large rock outcrop, and D shows a close-up of a regolith surface with a red marker.

This map is not to be disseminated without the consent of the publisher. All rights reserved. This map is the property of CRC LEME and is loaned to you for your use only. No part of this map may be reproduced without the written permission of CRC LEME.