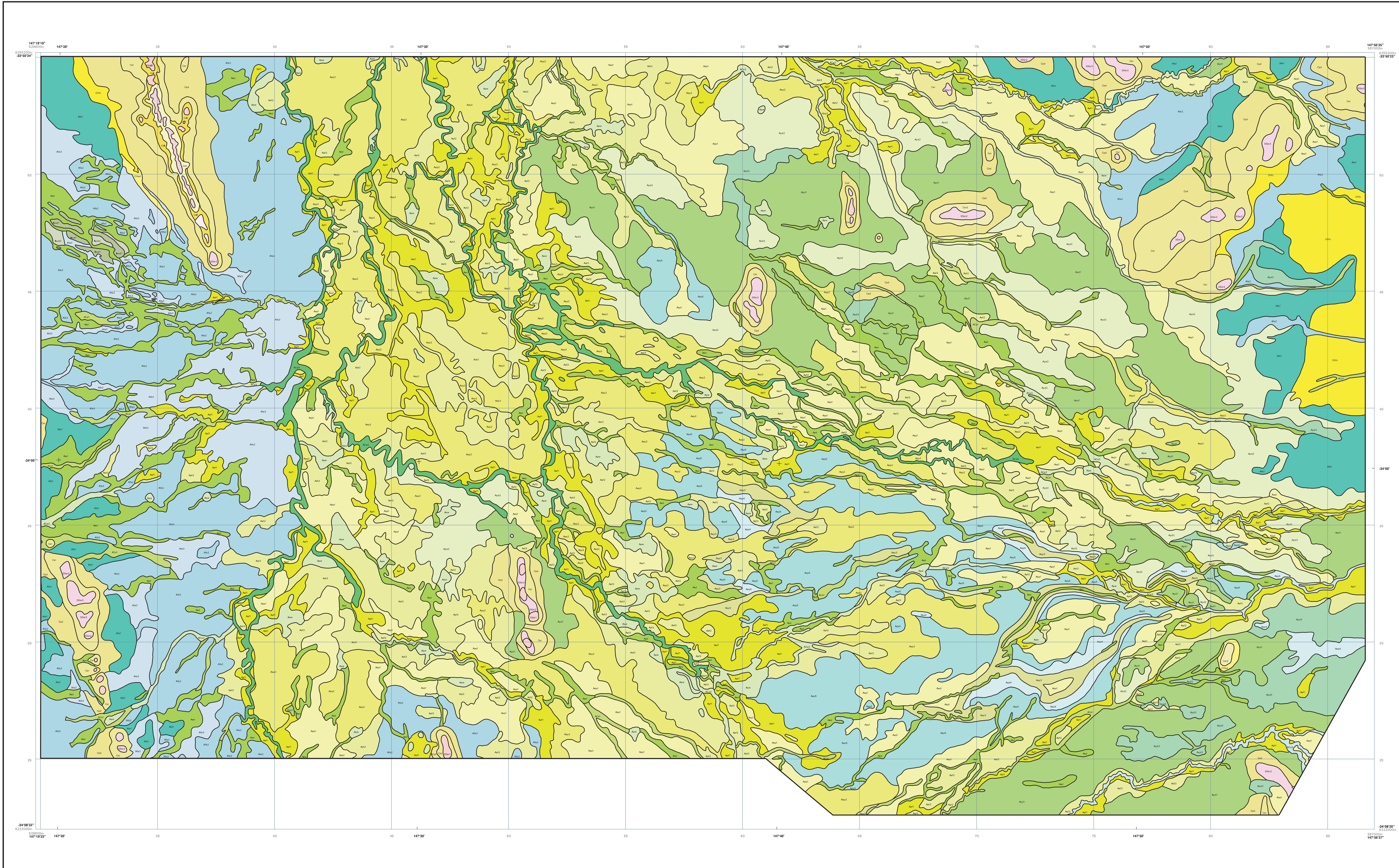


# Booberoi-Quandialla Regolith-Landforms 1:50 000



**Transported Regolith**

**Aluvial Units**

**Colluvial Units**

**Aeolian Units**

**In-Situ Regolith**

**Soils**

**LANDFORMS**

**LINE LEGEND**

**MAP LOCALITY**

**INDEX TO ADJOINING 1:50 000 MAP SHEETS**

**SCALE 1:50 000**

**UNIVERSAL TRANSVERSE MERCATOR PROJECTION**

**LAND & WATER**

**LANDCARE**

**Dryland Salinity Hazard Mitigation Program**

**UNIVERSITY OF CALIFORNIA**

**LANDSCAPE ARCHITECTURE AND PLANNING**

**COMPILED BY MICHAEL HICKS, 2003**

**MAPPING CONDUCTED BY MICHAEL HICKS**

**Copyright by Greg Cook, Geospatial Australia**

**It is recommended that this map be referred to as:**

**HICKS, M. (2003) Booberoi-Quandialla Regolith-Landforms Map (1:50,000 scale). Dryland Salinity Hazard Mitigation Program, University of Canberra.**

**The map shows regolith regions on this map are based on interpretation of all available data and are not intended to be used as a basis for any legal or other purposes. The map is provided as a service to the community and is not intended to be used as a basis for any legal or other purposes.**

**Copies of this map can be obtained from:**

**The Dryland Salinity Hazard Mitigation Program**  
 School of Education and Community Studies  
 University of Canberra, ACT 2616  
 Tel: 02 520 15300 Fax: 02 520 15380  
 Email: m.hicks@canberra.edu.au

**This work is copyright. Apart from any fair dealing for the purpose of study, research, criticism or review, as permitted under the Copyright Act, no part may be reproduced by any process without written permission. Copyright in the map is the property of the University of Canberra. All rights reserved.**

**The Dryland Salinity Hazard Mitigation Program**  
 School of Education and Community Studies  
 University of Canberra, ACT 2616  
 Tel: 02 520 15300 Fax: 02 520 15380  
 Email: m.hicks@canberra.edu.au

**Published by CSIRO, University of Canberra, Canberra, Australia**

**The author has made every effort to ensure that the information in this product is accurate and complete. However, the user assumes full responsibility for the use of the information contained in this product.**

**The author has made every effort to ensure that the information in this product is accurate and complete. However, the user assumes full responsibility for the use of the information contained in this product.**