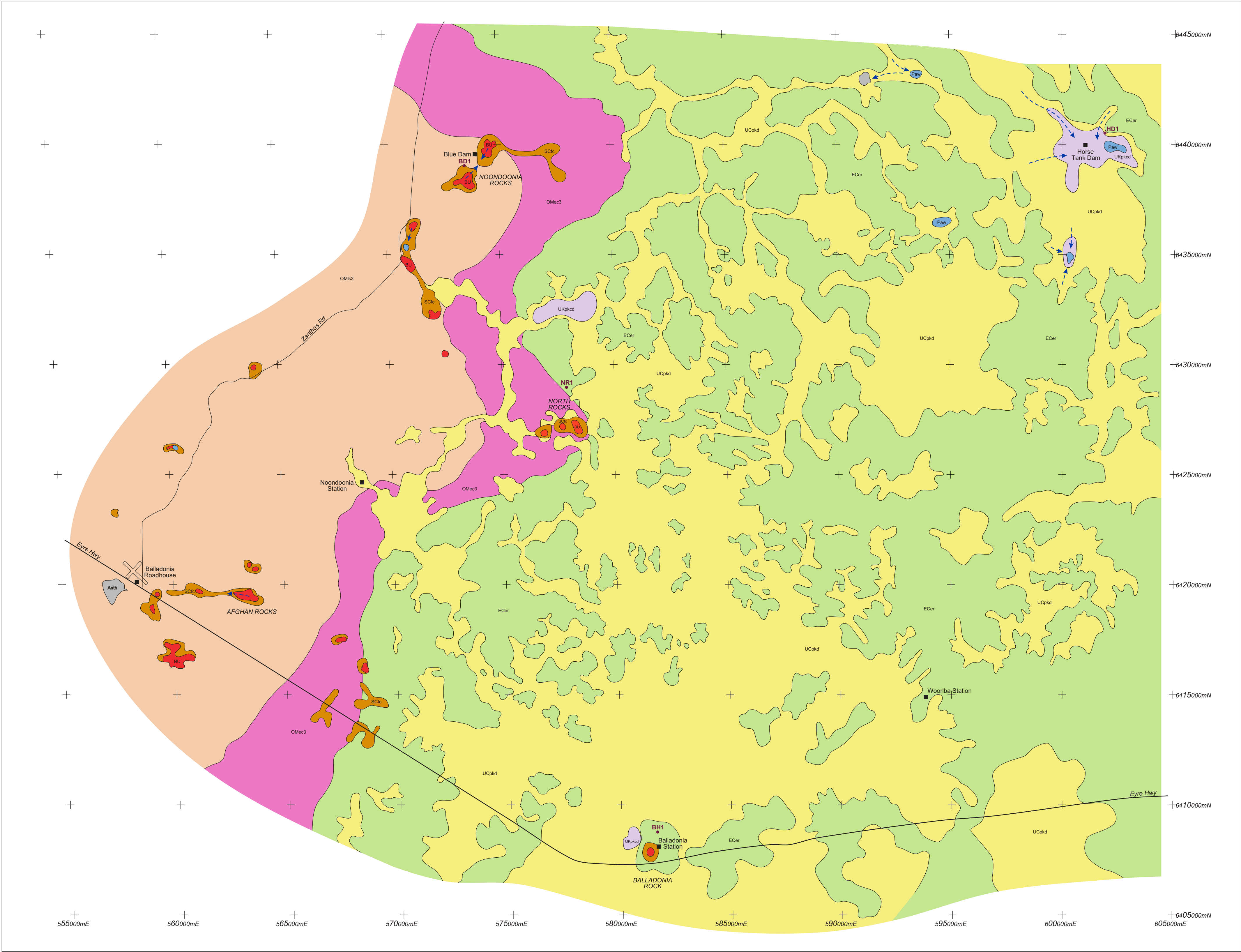


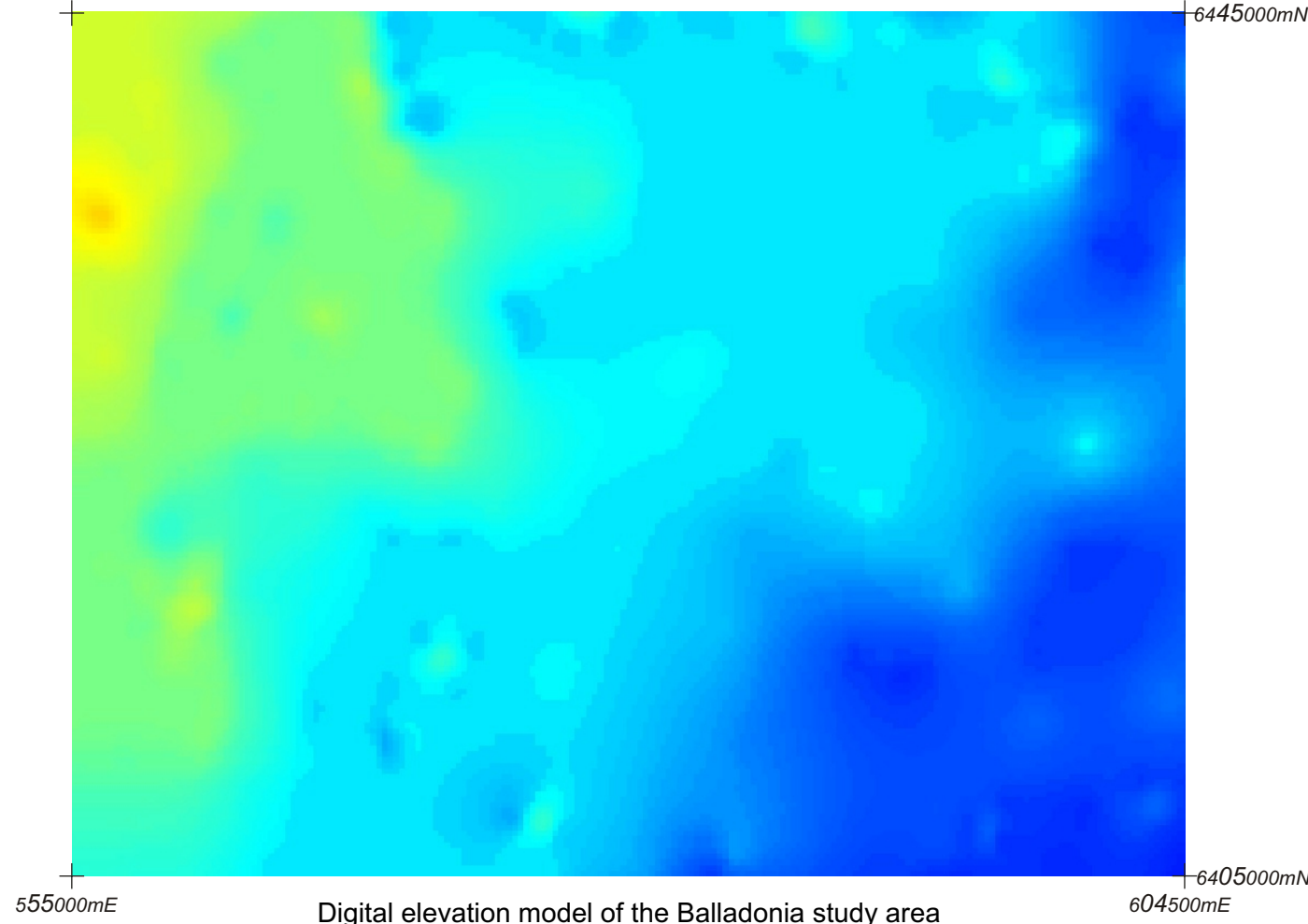
Balladonia Regolith Landforms



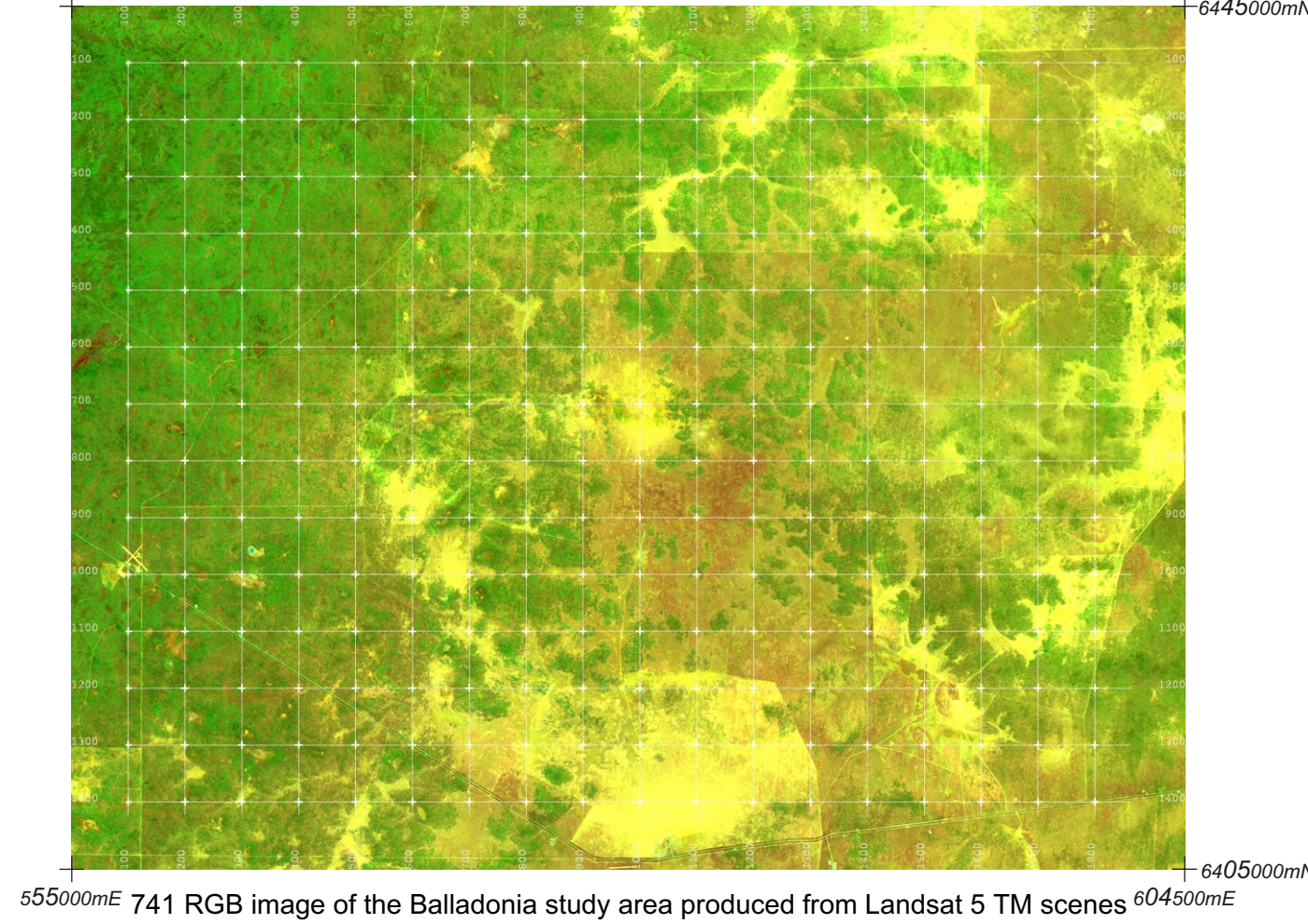
- Ephemeral drainage
- Paw** - Clay pan/ ephemeral swamp
- Clay pan, ephemeral swamp
- UCpkd** - Karst depressions/depositional plain
- Depositional plains in karst depressions, containing distal sheetwash, swamp and lacustrine sediments along with other alluvial, colluvial and aeolian sediments. These units are covered with mainly bluebush and saltbush generally below 1m.
- ECer** - Calcreted rises
- Residual rises of indurated Miocene sediments and massive calcrete. Predominantly to the east of the Eocene scarp. Flanked by minor colluvium, with cover of acacia and eucalypt. Simple relief generally on two levels.
- SCfc** - Granitoid saprolite
- Completely weathered granitoid bedrock, shed from adjacent granite outcrops. Modifies regolith by adding quartzo-feldspathic detritus to fine clays and carbonates.
- BU** - Crystalline basement exposures/ granite inselbergs
- Exposed bedrock, predominantly granite.
- OMs3** - Eocene Terrace
- Residual Eocene terrace, complex local relief and some induration by calcrete. Landscape modified by granitoid/clastic sedimentation, predominantly bioclastic Eocene sediments with this veneer and lenses of Miocene sediments. Possible maximum level of Miocene shoreline. Eastern margin of the unit is approximated by the 175m-elevation contour line.
- UCpkcd** - Closed depression
- Closed drainage depression within karst depositional plain. Possibly immature donga form, occupying topographic low points. Usually highlighted by the presence of clay pans and ephemeral swamps at drainage lows.
- OMec3** - Erosional Scarp on Eocene Terrace
- Erosional / colluvial scarp of predominantly Eocene sediments with lenses of Miocene sediments. Eastern margin of this unit is approximated by the 160 m contour. Local complex relief, transitional between Eocene terrace and lower levels.
- Anth** - Anthropogenic alterations
- Major Anthropogenic disturbances



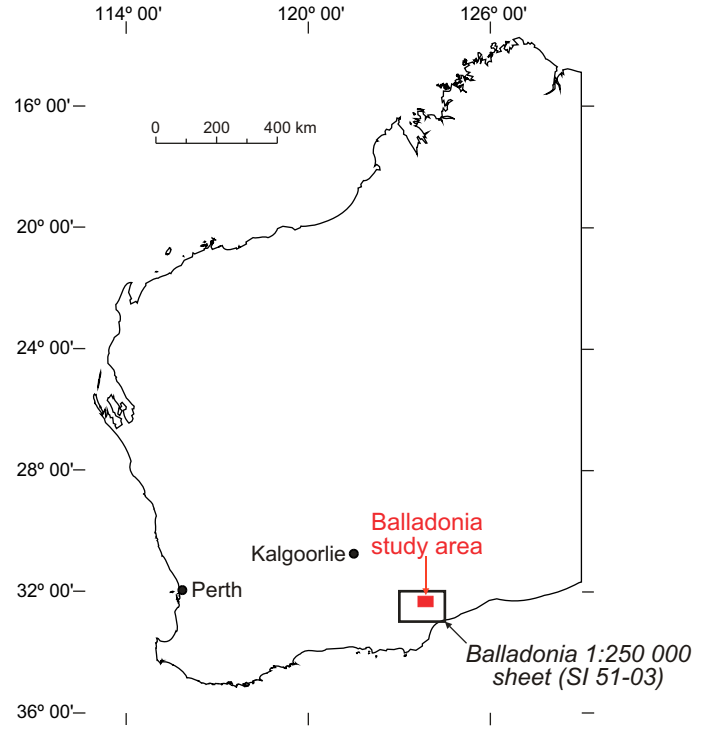
RGB K-Th-U image of the Balladonia study area



Digital elevation model of the Balladonia study area



741 RGB image of the Balladonia study area produced from Landsat 5 TM scenes



Map compiled by Ian Anderson, CRCLEME ANU Honours 2001/2002

References:
Doepel, J.J.G and Lowry, D.C. (1970a) *Balladonia 1:250 000 Geological series Explanatory notes sheet SI/51-3*, Geological Survey of Western Australia

Acknowledgements;
Dr Jon Clarke, Travis Naughton
Balladonia Community Progress Association.

Landsat imagery provided by the Australian Centre for Remote Earth Sensing (ACRES), Australian Survey and Land Information Group, DIST, Canberra and digitally enhanced and produced by Satellite Remote Sensing Services, Western Australian Department of Land Administration.

Point Located and Gridded Radiometric Data for Balladonia and Zanthus 1:250 000 map sheet areas provided by Geoscience Australia, Canberra.

GEODATA 9 second DEM supplied by National Mapping Agency, Geoscience Australia, Canberra.

0 1 2 3 4 5 6 7 8 9 10 km
Scale 1:100 000

Universal Transverse Mercator Projection
Horizontal Datum: AGD66 AMG Zone 51

